

Table 1. Economic Indicators, 1997 - 2006

	1997	1998	1999	2000	2001	2002	2003	2004	2005	2006
GDP ^{1/}										
RGDP (1995 constant prices) Rf mn.	5,144.6	5,648.2	6,056.6	6,345.5	6,564.4	6,992.8	7,589.9	8,312.3	7,880.6	9,352.1
RGDP (1995 constant prices) US\$ mn.	437.1	479.9	514.6	539.1	557.7	594.1	644.8	706.2	669.5	794.6
NGDP (in millions of Rf at current price)	5,981.8	6,356.9	6,935.4	7,348.4	7,650.8	8,201.0	8,863.2	9,938.7	9,799.4	12,094.5
NGDP (in millions of US\$ at current price)	508.2	540.1	589.2	624.3	625.1	640.7	692.4	776.5	765.6	944.9
(Annual percentage change)										
RGDP (1995 constant prices) Rf mn.	10.4	9.8	7.2	4.8	3.5	6.5	8.5	9.5	-5.2	18.7
NGDP (in millions of Rf at current price)	12.8	6.3	9.1	6.0	4.1	7.2	8.1	12.1	-1.4	23.4
TOURISM										
Tourist arrivals ('000)	365.6	395.7	429.7	467.2	461.0	484.7	563.6	616.7	395.3	-
Tourist bed nights ('000)	3,271	3,467	3,718	3,937	3,933	4,066	4,705	5,111	3,300	-
Tourist bed nights (%)	7.6	6.0	7.3	5.9	-0.1	3.4	15.7	8.6	-35.4	-
Bed capacity (Resorts/Hotels)	11,555	12,453	14,652	15,812	16,478	16,131	16,692	16,621	13,946	-
Bed night capacity ('000)	4,217	4,546	5,348	5,788	6,015	5,887	6,092	6,083	5,093	-
Capacity utilization rate (%)	77.4	76.2	69.7	68.2	65.6	69.0	77.2	83.9	64.5	-
Average stay (days)	9.0	8.8	8.7	8.4	8.6	8.4	8.4	8.3	8.3	-
FISH PRODUCTION										
Landings('000 MTs) ^{2/}	101.8	115.1	123.3	115.4	125.0	160.2	152.2	156.0	182.9	-
Total fish exports ('000 MTs)	30.3	29.8	37.6	28.3	29.7	44.6	69.8	75.4	82.1	-
Total fish exports (US\$ mn.)	49.1	51.9	34.4	34.0	35.8	49.2	69.1	84.4	96.6	-
o/w private sector operators in zones ^{3/}										
Tuna - MT ('000)	na	na	na	na	na	na	7.9	14.1	17.3	-
Tuna - US\$ (mn.)	na	na	na	na	na	na	4.7	8.6	12.8	-
CONSUMER PRICE INDEX (CPI) % change										
Total CPI	7.6	-1.4	3.0	-1.2	0.7	0.9	-2.9	6.4	3.3	-
Total CPI (excl food)	0.5	0.9	2.1	1.3	-0.2	-0.8	-0.7	0.2	4.2	-
Total CPI (excl fish)	2.0	1.9	3.1	-2.8	3.1	1.5	-2.5	3.9	2.7	-
EMPLOYMENT										
Government employees (permanent)	16,006	16,463	19,748	20,336	21,705	23,464	24,233	26,357	27,636	-
Total expatriate labour force	16,744	20,595	26,468	27,716	29,201	30,664	33,765	38,413	44,845	-
(Annual percentage change)										
Government employees	14.3	2.9	20.0	3.0	6.7	8.1	3.3	8.8	4.9	-
Total expatriate labour force	-20.9	23.0	28.5	4.7	5.4	5.0	10.1	13.8	16.7	-
PUBLIC FINANCE (Rf mn) ^{4/}										
Total revenue and grants	1,824.7	1,930.2	2,225.3	2,372.7	2,522.6	2,714.9	3,087.9	3,424.7	4,542.6	6,548.8
o.w. Tourism tax	257.0	257.7	276.0	276.6	292.7	305.2	359.8	409.5	336.3	427.8
o.w. Import duty	552.8	576.5	628.5	652.6	661.7	692.1	817.1	1,135.9	1,133.4	1,519.2
Expenditure and net lending	1,906.0	2,053.3	2,506.4	2,694.2	2,885.9	3,117.3	3,388.2	3,582.6	5,739.9	8,644.7
Overall deficit (-)	-81.3	-123.1	-281.1	-321.5	-363.3	-402.4	-300.3	-157.9	-1,197.3	-2,095.9
(percent of GDP)										
Total revenue and grants	30.5	30.4	32.1	32.3	33.0	33.1	34.8	34.5	46.4	54.1
o.w. Tourism tax	4.3	4.1	4.0	3.8	3.8	3.7	4.1	4.1	3.4	3.5
o.w. Import duty	9.2	9.1	9.1	8.9	8.6	8.4	9.2	11.4	11.6	12.6
Expenditure and net lending	31.9	32.3	36.1	36.7	37.7	38.0	38.2	36.0	58.6	71.5
Overall deficit (-)	-1.4	-1.9	-4.1	-4.4	-4.7	-4.9	-3.4	-1.6	-12.2	-17.3

	1997	1998	1999	2000	2001	2002	2003	2004	2005	2006
MONEY AND BANKING (Rf mn) ^{5/}										
Net foreign assets	1,141.9	1,483.9	1,398.8	1,306.9	1,147.0	1,655.3	2,604.3	3,357.1	1787.7	-
Domestic credit	1,736.8	2,062.6	2,228.1	2,556.5	3,058.4	3,415.3	3,210.4	4,239.6	6904.9	-
Claims on private sector	996.8	1,253.2	1,302.8	1,407.1	1,827.2	2,100.8	2,244.4	3,541.3	5474.1	-
Total Liquidity	2,276.2	2,799.9	2,898.6	3,019.5	3,293.2	3,936.0	4,507.5	5,983.7	6685.0	-
Change in net claims on Government	-86.6	7.9	84.7	235.7	82.4	56.4	-227.9	-419.3	496.7	-
(Annual percentage change)										
Net foreign assets	39.4	29.9	-5.7	-6.6	-12.2	44.3	57.3	28.9	-46.7	-
Domestic credit	8.9	18.8	8.0	14.7	19.6	11.7	-6.0	32.1	62.9	-
Claims on private sector	38.9	25.7	4.0	8.0	29.9	15.0	6.8	57.8	54.6	-
Total Liquidity	23.3	23.0	3.5	4.2	9.1	19.5	14.5	32.8	11.7	-
BALANCE OF PAYMENTS (US\$ mn) ^{6/}										
Current Account	-34.7	-21.9	-78.9	-51.5	-58.7	-35.7	-31.8	-133.9	-330.0	-
Balance on goods	-217.3	-215.9	-262.4	-233.3	-236.0	-212.4	-262.3	-386.4	-493.8	-
Goods: credit	89.7	95.6	91.5	108.7	110.2	132.3	152.0	181.0	161.6	-
Goods: debit	-307.0	-311.5	-353.9	-342.0	-346.3	-344.7	-414.3	-567.3	-655.5	-
Overall balance	22.1	20.2	8.6	-4.4	-29.8	40.2	26.5	44.2	-17.3	-
(percent of GDP)										
Current Account	-6.8	-4.0	-13.4	-8.2	-9.4	-5.6	-4.6	-17.2	-43.1	-
Balance on goods	-42.8	-40.0	-44.5	-37.4	-37.8	-33.2	-37.9	-49.8	-64.5	-
Goods: credit	17.6	17.7	15.5	17.4	17.6	20.7	22.0	23.3	21.1	-
Goods: debit	-60.4	-57.7	-60.1	-54.8	-55.4	-53.8	-59.8	-73.1	-85.6	-
Overall balance	4.4	3.7	1.5	-0.7	-4.8	6.3	3.8	5.7	-2.3	-
EXTERNAL RESERVES										
Gross international reserves (US\$ mn) ^{7/}	99.1	119.4	127.9	123.6	93.8	133.9	160.3	204.4	187.1	-
Gross international reserves in months of imports (c.i.f.)	3.4	4.0	3.8	3.8	2.8	4.1	4.1	3.8	3.0	-
(Annual percentage change)										
Gross international reserves	28.8	20.4	7.2	-3.4	-24.1	42.7	19.7	27.5	-8.5	-
EXTERNAL PUBLIC DEBT (US\$ mn) ^{8/}										
Debt outstanding disbursed	165.3	184.7	185.6	178.0	181.5	223.1	272.9	311.6	309.9	451.9
Amortization	24.2	11.1	12.5	14.3	15.6	16.7	16.7	21.6	23.9	23.2
Disbursements	30.7	25.7	17.6	12.4	23.4	43.5	46.6	46.5	41.8	156.0
Debt service	28.0	15.0	16.8	19.0	20.1	21.2	21.5	28.4	31.1	31.0
Debt service ratio ^{9/}	7.0	3.5	3.9	4.2	4.3	4.3	3.7	4.1	6.5	4.9
EXCHANGE RATE										
Rufiyaa / US\$ (end of period mid rate)	11.77	11.77	11.77	11.77	12.80	12.80	12.80	12.80	12.80	-

1/ 2005 est. and 2006 proj. on 25th June 2006.

2/ 2006 Jan-Apr numbers are actual & May-Sep numbers are estimates.

3/ For fisheries sector purposes the country has been divided into four zones. Zone 1 and 3 has been opened to private sector with two parties given licence to operate in each zone. State owned enterprise MIFCO operates in Zone 2 and 4.

4/ Figures for 2005 are prov. est. and 2006 are budget estimates.

5/ Series revised on 23rd Jan 2006.

6/ Figures for 2005 are estimates and 2006 are projections of 17th July 2006.

7/ Foreign Assets of MMA. Series revised on 23rd Jan 2006 - to exclude gold and silver coin from foreign assets

8/ Figures for 2006 are projection and 2006 Aug & Sep data are estimates.

9/ Ratio of debt service to exports of goods and nonfactor services.

Source: MMA, MPND, MOT, MHREL, MOFAMR, MoFT, Maldives Customs Service, President's Office.

2005												2006									
Feb-05	Mar-05	Apr-05	May-05	Jun-05	Jul-05	Aug-05	Sep-05	Oct-05	Nov-05	Dec-05	Jan-06	Feb-06	Mar-06	Apr-06	May-06	Jun-06	Jul-06	Aug-06	Sep-06		
GDP ^{1/}																					
-	-	-	-	-	-	-	-	-	-	-	-	-	-	-	-	-	-	-	-	-	RGDP (1995 constant prices) Rf mn.
-	-	-	-	-	-	-	-	-	-	-	-	-	-	-	-	-	-	-	-	-	RGDP (1995 constant prices) US\$ mn.
-	-	-	-	-	-	-	-	-	-	-	-	-	-	-	-	-	-	-	-	-	NGDP (in millions of Rf at current price)
-	-	-	-	-	-	-	-	-	-	-	-	-	-	-	-	-	-	-	-	-	NGDP (in millions of US\$ at current price)
(Annual percentage change)																					
-	-	-	-	-	-	-	-	-	-	-	-	-	-	-	-	-	-	-	-	-	RGDP (1995 constant prices) Rf mn.
-	-	-	-	-	-	-	-	-	-	-	-	-	-	-	-	-	-	-	-	-	NGDP (in millions of Rf at current price)
TOURISM																					
29.4	35.7	29.7	25.3	22.6	29.9	38.4	33.7	40.5	44.5	46.8	58.3	54.7	54.6	56.0	41.0	33.0	42.8	50.0	44.6	22.8	Tourist arrivals ('000)
238	307	259	221	187	260	335	289	335	367	367	468	436	468	446	336	265	340	427	361	24.8	Tourist bed nights ('000)
-51.9	-40.1	-44.1	-37.6	-32.6	-29.7	-27.8	-25.8	-21.7	-16.7	-7.2	245.5	83.4	52.4	72.1	52.0	41.7	30.8	27.5	24.8	24.8	Tourist bed nights (%)
13,076	13,438	13,958	13,674	13,450	13,598	13,930	14,194	14,358	14,368	15,886	15,886	15,956	16,094	16,142	16,142	15,574	15,764	15,910	16,402	24.8	Bed capacity (Resorts/Hotels)
366	417	419	424	404	422	432	426	445	431	492	492	447	499	484	500	467	489	493	492	24.8	Bed night capacity ('000)
64.9	73.7	61.9	52.1	46.3	61.6	77.5	68.0	75.3	85.1	74.5	95.1	97.5	93.7	92.2	67.1	56.7	69.5	86.5	73.4	24.8	Capacity utilization rate (%)
8.1	8.6	8.7	8.7	8.3	8.7	8.7	8.6	8.3	8.3	7.8	8.0	8.0	8.6	8.0	8.2	8.0	7.9	8.5	8.1	24.8	Average stay (days)
FISH PRODUCTION																					
12.8	15.4	15.8	16.6	12.3	15.8	15.2	12.0	13.2	20.5	19.5	20.3	18.7	15.3	20.3	9.8	9.9	5.7	10.0	6.9	24.8	Landings('000 MTs) ^{2/}
5.7	6.2	8.6	9.5	6.2	4.2	7.1	3.0	6.3	6.5	9.4	12.3	12.2	14.4	6.7	15.0	7.0	4.7	7.3	4.7	24.8	Total fish exports ('000 MTs)
7.3	8.0	10.0	10.9	7.9	5.4	8.6	4.7	7.2	6.8	9.9	10.9	12.2	17.8	8.8	15.3	7.0	7.1	9.8	6.0	24.8	Total fish exports (US\$ mn.)
o/w private sector operators in zones ^{3/}																					
1.6	0.8	1.0	1.5	1.8	1.3	2.1	1.3	0.0	2.8	0.8	5.2	0.8	2.9	1.0	1.9	2.9	1.0	0.9	1.4	24.8	Tuna - MT ('000)
1.1	0.6	0.8	1.2	1.5	1.2	1.5	1.1	0.0	2.0	0.5	3.2	0.6	3.3	0.9	1.5	2.5	0.9	0.9	1.2	24.8	Tuna - US\$ (mn.)
CONSUMER PRICE INDEX (CPI) % change																					
7.5	8.0	8.0	7.0	6.8	6.6	6.7	6.9	5.6	4.4	3.3	2.9	2.2	1.8	1.9	2.0	2.0	2.1	2.1	2.2	24.8	Total CPI
1.1	1.7	2.2	2.6	3.1	3.5	3.9	4.2	4.2	4.2	4.2	4.0	3.9	3.7	3.4	3.3	3.1	3.1	3.1	3.3	24.8	Total CPI (excl food)
4.9	5.5	5.6	5.2	5.1	5.0	5.0	5.2	4.1	3.1	2.7	2.6	2.3	1.8	2.1	2.7	2.7	3.1	3.3	3.5	24.8	Total CPI (excl fish)
EMPLOYMENT																					
-	-	-	-	-	-	-	-	-	-	-	-	-	-	-	-	-	-	-	-	-	Government employees (permanent)
39,002	39,424	39,315	38,900	40,174	41,223	42,136	43,554	42,962	43,515	44,845	44,436	45,031	45,183	45,951	46,766	48,551	50,231	51,639	51,869	24.8	Total expatriate labour force
(Annual percentage change)																					
-	-	-	-	-	-	-	-	-	-	-	-	-	-	-	-	-	-	-	-	-	Government employees
15.2	11.9	11.9	14.0	13.8	15.1	14.8	15.7	11.5	11.9	16.7	17.1	15.5	14.6	16.9	20.2	20.9	21.9	22.6	19.1	24.8	Total expatriate labour force
PUBLIC FINANCE (Rf mn) ^{4/}																					
-	-	-	-	-	-	-	-	-	-	-	-	-	-	-	-	-	-	-	-	-	Total revenue and grants
-	-	-	-	-	-	-	-	-	-	-	-	-	-	-	-	-	-	-	-	-	o.w. Tourism tax
-	-	-	-	-	-	-	-	-	-	-	-	-	-	-	-	-	-	-	-	-	o.w. Import duty
-	-	-	-	-	-	-	-	-	-	-	-	-	-	-	-	-	-	-	-	-	Expenditure and net lending
-	-	-	-	-	-	-	-	-	-	-	-	-	-	-	-	-	-	-	-	-	Overall deficit (-)
(percent of GDP)																					
-	-	-	-	-	-	-	-	-	-	-	-	-	-	-	-	-	-	-	-	-	Total revenue and grants
-	-	-	-	-	-	-	-	-	-	-	-	-	-	-	-	-	-	-	-	-	o.w. Tourism tax
-	-	-	-	-	-	-	-	-	-	-	-	-	-	-	-	-	-	-	-	-	o.w. Import duty
-	-	-	-	-	-	-	-	-	-	-	-	-	-	-	-	-	-	-	-	-	Expenditure and net lending
-	-	-	-	-	-	-	-	-	-	-	-	-	-	-	-	-	-	-	-	-	Overall deficit (-)

2005											2006										
Feb-05	Mar-05	Apr-05	May-05	Jun-05	Jul-05	Aug-05	Sep-05	Oct-05	Nov-05	Dec-05	Jan-06	Feb-06	Mar-06	Apr-06	May-06	Jun-06	Jul-06	Aug-06	Sep-06		
MONEY AND BANKING (Rf mn) ^{5/}																					
2,669.9	2,807.8	2,441.8	2,515.7	2,776.4	2,804.2	2,249.0	1,904.0	1,774.9	1,977.5	1,787.7	1,959.3	1,938.3	1,936.6	2,290.7	2,712.2	2,366.5	2,225.6	1,857.2	1,697.6	Net foreign assets	
4,576.5	4,679.9	5,017.9	5,293.9	5,269.3	5,430.8	5,951.4	6,179.5	6,479.9	6,621.9	6,904.9	6,837.8	7,142.9	7,122.1	7,221.5	7,022.3	7,368.3	7,220.8	7,630.2	7,901.1	Domestic credit	
3,739.9	3,795.9	3,889.9	4,163.0	4,195.1	4,306.7	4,669.9	4,821.8	5,127.4	5,342.7	5,474.1	5,582.3	5,692.8	5,722.8	5,861.2	5,609.1	5,894.6	6,074.7	6,440.5	6,934.4	Claims on private sector	
5,948.8	5,901.9	5,960.9	6,195.8	6,325.5	6,658.7	6,439.2	6,266.5	6,341.4	6,631.6	6,685.0	6,983.4	7,153.5	7,151.6	7,528.9	7,710.5	7,700.9	7,446.8	7,445.1	7,531.2	Total Liquidity	
103.5	84.4	119.4	69.9	-81.1	16.7	64.1	73.9	35.5	-37.8	66.3	-100.7	171.3	-61.2	26.2	125.9	10.9	-387.8	-28.3	-186.7	Change in net claims on Government	
<i>(Annual percentage change)</i>																					
-9.9	-8.8	-24.7	-25.0	-15.4	-7.3	-25.4	-33.6	-40.9	-37.9	-46.7	-36.9	-27.4	-31.0	-6.2	7.8	-14.8	-20.6	-17.4	-10.8	Net foreign assets	
37.8	36.1	52.0	56.7	49.5	51.2	60.7	59.0	61.1	61.5	62.9	60.7	56.1	52.2	43.9	32.6	39.8	33.0	28.2	27.9	Domestic credit	
63.2	55.2	56.5	64.7	52.5	46.8	52.4	50.2	53.4	58.1	54.6	56.6	52.2	50.8	50.7	34.7	40.5	41.1	37.9	43.8	Claims on private sector	
22.9	18.4	17.5	19.1	18.8	27.9	21.5	18.4	14.4	15.0	11.7	20.2	20.3	21.2	26.3	24.4	21.7	11.8	15.6	20.2	Total Liquidity	
BALANCE OF PAYMENTS (US\$ mn) ^{6/}																					
-	-	-	-	-	-	-	-	-	-	-	-	-	-	-	-	-	-	-	-	Current Account	
-30.6	-40.1	-36.4	-45.2	-45.1	-41.8	-45.8	-49.6	-42.3	-43.4	-51.5	-46.6	-44.3	-38.6	-49.0	-44.2	-55.2	-49.1	-69.0	-47.6	Balance on goods	
13.2	13.9	14.0	17.1	11.5	8.7	14.1	9.6	13.4	13.4	17.7	18.7	19.9	25.5	16.3	25.6	12.3	14.1	19.0	13.8	Goods: credit	
-43.9	-54.0	-50.4	-62.3	-56.6	-50.6	-60.0	-59.2	-55.7	-56.8	-69.2	-65.3	-64.2	-64.1	-65.3	-69.8	-67.5	-63.2	-88.0	-61.4	Goods: debit	
-	-	-	-	-	-	-	-	-	-	-	-	-	-	-	-	-	-	-	-	Overall balance	
<i>(percent of GDP)</i>																					
-	-	-	-	-	-	-	-	-	-	-	-	-	-	-	-	-	-	-	-	Current Account	
-	-	-	-	-	-	-	-	-	-	-	-	-	-	-	-	-	-	-	-	Balance on goods	
-	-	-	-	-	-	-	-	-	-	-	-	-	-	-	-	-	-	-	-	Goods: credit	
-	-	-	-	-	-	-	-	-	-	-	-	-	-	-	-	-	-	-	-	Goods: debit	
-	-	-	-	-	-	-	-	-	-	-	-	-	-	-	-	-	-	-	-	Overall balance	
EXTERNAL RESERVES																					
210.2	221.7	208.2	215.5	221.9	221.6	217.2	202.9	198.5	200.3	187.1	201.3	201.7	199.2	220.5	233.0	213.6	227.5	232.6	243.4	Gross international reserves (US\$ mn) ^{7/}	
3.9	4.0	3.7	3.8	3.8	3.7	3.6	3.3	3.3	3.3	3.0	3.1	3.0	2.9	3.2	3.3	3.0	3.2	3.1	3.3	Gross international reserves in months of imports (c.i.f.)	
<i>(Annual percentage change)</i>																					
21.6	25.7	14.1	16.3	18.6	18.8	17.8	8.7	3.5	0.4	-8.5	-5.6	-4.0	-10.1	5.9	8.1	-3.7	2.7	7.1	19.9	Gross international reserves	
EXTERNAL PUBLIC DEBT (US\$ mn) ^{8/}																					
309.1	311.5	313.0	311.8	305.5	304.2	306.3	304.0	307.6	308.1	309.5	312.6	309.7	311.4	321.9	327.2	325.7	327.8	328.1	330.5	Debt outstanding disbursed	
1.8	0.7	0.9	2.0	4.8	1.9	1.8	0.7	0.7	1.5	5.2	1.5	1.5	0.4	0.7	1.5	5.4	1.7	1.6	0.7	Amortization	
3.4	6.6	1.5	5.2	4.1	1.2	2.2	0.2	4.7	5.6	5.4	1.5	0.9	0.7	6.4	5.6	3.0	3.9	1.7	3.1	Disbursements	
2.7	0.9	1.2	2.4	6.4	2.4	2.3	0.9	1.0	1.9	6.9	1.8	2.1	0.5	1.1	1.8	7.4	2.2	2.9	0.9	Debt service	
-	-	-	-	-	-	-	-	-	-	-	-	-	-	-	-	-	-	-	-	Debt service ratio ^{8/}	
EXCHANGE RATE																					
12.80	12.80	12.80	12.80	12.80	12.80	12.80	12.80	12.80	12.80	12.80	12.80	12.80	12.80	12.80	12.80	12.80	12.80	12.80	12.80	12.80	Rufiyaa / US\$ (end of period mid rate)

Table 2. Gross Domestic Product by Sectoral Origin, 1997 - 2006

(In millions of rufiyaa at constant 1995 prices)

	1997	1998	1999	2000	2001	2002	2003	2004	2005 ^{1/} est.	2006 ^{1/} Proj.
Gross domestic product	5,144.6	5,648.2	6,056.6	6,345.5	6,564.4	6,992.8	7,589.9	8,312.3	7,880.6	9,352.1
Primary sector	541.2	578.8	599.2	595.2	625.5	724.8	738.0	760.5	790.9	814.8
Agriculture	162.6	165.5	168.8	174.7	181.4	188.6	196.3	204.6	203.6	202.7
Fisheries	344.2	373.8	388.1	381.2	402.4	494.7	498.0	508.1	537.7	570.4
Coral and sand mining	34.4	39.5	42.2	39.3	41.7	41.5	43.7	47.7	49.5	50.9
Secondary sector	683.4	801.2	900.5	914.9	989.0	1,091.7	1,182.6	1,335.1	1,374.5	1,539.5
Manufacturing	388.8	435.4	483.3	505.1	532.4	615.1	642.6	660.1	593.9	644.0
Electricity and water supply	133.1	156.4	178.5	203.9	226.3	247.6	275.0	312.8	363.4	384.6
Construction	161.4	209.4	238.7	205.8	230.3	229.0	264.9	362.2	417.3	510.9
Tertiary sector	4,126.4	4,493.5	4,798.7	5,084.6	5,205.4	5,448.8	5,969.2	6,549.1	6,018.5	7,365.6
Wholesale and retail trade	261.1	270.4	278.9	287.8	288.9	295.6	308.3	326.2	336.0	341.1
Tourism (Resorts, etc)	1,753.7	1,854.2	1,982.3	2,094.0	2,093.5	2,162.6	2,482.5	2,688.8	1,798.5	2,710.2
Transport and communications	680.0	825.4	854.2	919.1	934.2	998.0	1,078.8	1,262.5	1,456.1	1,519.5
Financial services	178.0	194.3	208.6	215.1	220.4	235.1	251.1	269.5	261.0	297.3
Real Estate	434.6	460.6	483.9	496.7	507.4	530.7	550.0	571.4	574.6	592.5
Business services	152.2	166.1	178.3	183.9	188.4	201.0	211.1	222.5	222.4	240.4
Government Administration	537.5	590.5	677.8	750.7	833.0	883.9	943.3	1,061.8	1,221.5	1,513.7
Education, health and social services	129.2	131.9	134.6	137.2	139.6	141.9	144.2	146.4	148.5	150.9
Financial Services Indirectly Measured (FISIM)	-206.3	-225.2	-241.8	-249.3	-255.5	-272.5	-299.9	-332.4	-303.3	-367.7

(In percent of GDP)

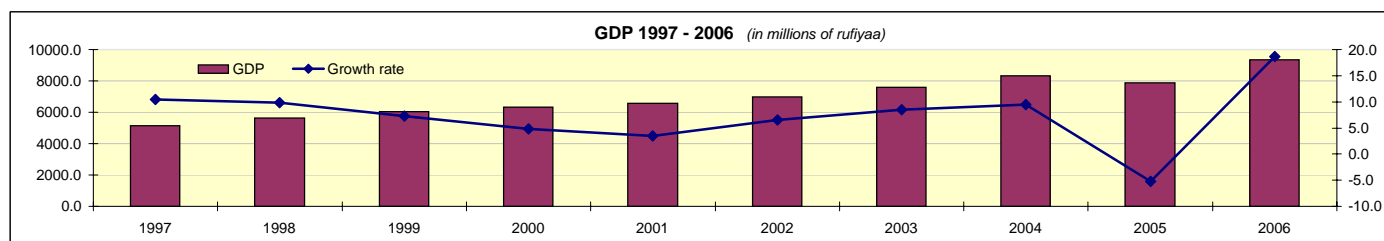
	1997	1998	1999	2000	2001	2002	2003	2004	2005	2006
Primary sector	10.5	10.2	9.9	9.4	9.5	10.4	9.7	9.1	10.0	8.7
Fisheries	6.7	6.6	6.4	6.0	6.1	7.1	6.6	6.1	6.8	6.1
Secondary sector	13.3	14.2	14.9	14.4	15.1	15.6	15.6	16.1	17.4	16.5
Manufacturing	7.6	7.7	8.0	8.0	8.1	8.8	8.5	7.9	7.5	6.9
Construction	3.1	3.7	3.9	3.2	3.5	3.3	3.5	4.4	5.3	5.5
Tertiary sector	80.2	79.6	79.2	80.1	79.3	77.9	78.6	78.8	76.4	78.8
Tourism (Resorts, etc)	34.1	32.8	32.7	33.0	31.9	30.9	32.7	32.3	22.8	29.0
Transport and Communications	13.2	14.6	14.1	14.5	14.2	14.3	14.2	15.2	18.5	16.2
Government Administration	10.4	10.5	11.2	11.8	12.7	12.6	12.4	12.8	15.5	16.2

Memorandum item:

Nominal GDP (Rf million)	5,981.8	6,356.9	6,935.4	7,348.4	7,650.8	8,201.0	8,863.2	9,938.7	9,799.4	12,094.5
Nominal GDP (US\$ million)	508.2	540.1	589.2	624.3	625.1	640.7	692.4	776.5	765.6	944.9
GDP per capita (in USD at constant prices)	1,711.0	1,840.2	1,933.8	1,986.4	2,020.9	2,117.7	2,262.1	2,439.6	2,279.3	2,658.8
GDP deflator (percent change)	3.0	2.0	1.7	1.1	0.6	0.6	-0.6	0.0	7.0	1.8
CPI (Percent change)	7.6	-1.4	3.0	-1.2	0.7	0.9	-2.9	6.4	3.3	1.9

1 / Revised on 25th June 2006.

Source: Ministry of Planning and National Development.



Last update: 25th June 2006

1997	1998	1999	2000	2001	2002	2003	2004	2005 ^{1/} est.	2006 ^{1/} Proj.	
<i>(Annual percentage change)</i>										
10.4	9.8	7.2	4.8	3.5	6.5	8.5	9.5	-5.2	18.7	Gross domestic product
2.1	7.0	3.5	-0.7	5.1	15.9	1.8	3.0	4.0	3.0	Primary sector
1.8	1.8	2.0	3.5	3.8	4.0	4.1	4.3	-0.5	-0.5	Agriculture
1.1	8.6	3.8	-1.8	5.6	22.9	0.7	2.0	5.8	6.1	Fisheries
15.2	14.9	7.0	-6.9	6.0	-0.4	5.3	9.2	3.8	2.8	Coral and sand mining
20.5	17.2	12.4	1.6	8.1	10.4	8.3	12.9	3.0	12.0	Secondary sector
16.0	12.0	11.0	4.5	5.4	15.5	4.5	2.7	-10.0	8.4	Manufacturing
23.3	17.5	14.1	14.3	11.0	9.4	11.1	13.7	16.2	5.8	Electricity and water supply
30.3	29.7	14.0	-13.8	11.9	-0.6	15.7	36.7	15.2	22.4	Construction
10.0	8.9	6.8	6.0	2.4	4.7	9.6	9.7	-8.1	22.4	Tertiary sector
7.3	3.6	3.2	3.2	0.4	2.3	4.3	5.8	3.0	1.5	Wholesale and retail trade
7.4	5.7	6.9	5.6	0.0	3.3	14.8	8.3	-33.1	50.7	Tourism (Resorts, etc)
17.0	21.4	3.5	7.6	1.6	6.8	8.1	17.0	15.3	4.4	Transport and communications
8.8	9.2	7.3	3.1	2.5	6.7	6.8	7.3	-3.2	13.9	Financial services
5.7	6.0	5.1	2.6	2.1	4.6	3.6	3.9	0.6	3.1	Real Estate
8.8	9.2	7.3	3.1	2.5	6.7	5.0	5.4	-0.1	8.1	Business services
18.5	9.9	14.8	10.7	11.0	6.1	6.7	12.6	15.0	23.9	Government Administration
2.1	2.1	2.0	2.0	1.7	1.7	1.6	1.5	1.5	1.6	Education, health and social services
8.8	9.2	7.3	3.1	2.5	6.7	10.1	10.8	-8.8	21.2	Financial Services Indirectly Measured (FISIM)
Primary sector										
Fisheries										
Secondary sector										
Manufacturing										
Construction										
Tertiary sector										
Tourism (Resorts, etc)										
Transport and Communications										
Government Administration										
Memorandum item:										
12.8	6.3	9.1	6.0	4.1	7.2	8.1	12.1	-1.4	23.4	Nominal GDP (Rf million)
Nominal GDP (US\$ million)										
GDP per capita (in USD at constant prices)										
GDP deflator (percent change)										
CPI (Percent change)										

Table 3. Tourist Arrivals by Nationality, 1997 - 2006

	1997	1998	1999	2000	2001	2002	2003	2004	2005
TOTAL TOURIST ARRIVALS ^{1/}	365,563	395,725	429,666	467,154	460,984	484,680	563,593	616,716	395,320
EUROPE	272,918	304,905	340,469	362,196	364,105	373,428	443,093	475,707	306,856
Austria	13,758	14,775	13,550	11,725	10,494	10,480	12,391	13,059	9,358
France	17,283	20,439	23,832	27,517	30,542	31,228	41,055	46,156	21,640
Germany	76,073	76,317	86,497	77,642	66,149	63,212	70,762	72,967	55,782
Italy	55,443	79,301	88,697	106,451	115,740	114,955	140,304	131,044	70,112
Russia	4,904	4,166	3,428	3,608	3,983	7,550	12,108	18,075	14,582
Switzerland	21,167	22,514	22,856	24,528	28,313	31,707	30,787	29,252	19,321
United Kingdom	51,552	55,729	63,919	71,440	77,151	80,377	93,989	113,991	87,264
Other Countries	32,738	31,664	37,690	39,285	31,733	33,919	41,697	51,163	28,797
ASIA	72,739	71,738	74,935	86,524	80,825	94,986	101,806	117,008	71,902
China	2,694	3,067	3,973	5,380	7,342	12,092	15,021	20,599	11,609
India	12,106	11,734	11,621	10,616	8,511	11,377	11,502	10,999	10,260
Japan	37,298	40,514	40,230	47,180	41,895	43,705	42,081	46,939	23,269
Korea	6,897	2,822	4,272	5,771	6,708	7,696	8,417	9,672	6,543
Malaysia	2,557	1,219	1,716	1,829	1,478	2,240	2,251	2,908	2,366
Saudi Arabia	0	0	0	0	0	0	0	1,872	691
Singapore	2,520	2,130	2,383	2,530	2,227	2,520	4,653	3,016	3,258
Sri Lanka	2,482	5,997	6,375	8,413	6,902	6,909	7,296	8,351	7,165
Thailand	860	790	1,083	1,007	1,350	2,002	3,009	3,289	1,114
Other Countries	5,325	3,465	3,282	3,798	4,412	6,445	7,576	9,363	5,627
AFRICA	8,075	7,168	1,846	2,311	2,060	3,002	3,984	5,325	3,460
S-Africa	6,767	6,583	1,437	1,767	1,368	1,914	2,929	3,846	2,392
Other Africa	1,308	585	409	544	692	1,088	1,055	1,479	1,068
AMERICAS	6,101	6,120	6,082	7,108	6,814	7,489	7,665	9,390	7,244
Brazil	0	683	374	318	338	381	447	533	429
Canada	1,492	1,110	1,165	1,316	1,442	1,569	1,649	2,069	1,426
U.S.A	3,379	3,770	4,103	4,795	4,435	5,030	5,005	5,999	4,833
Other Countries	1,230	557	440	679	599	509	564	789	556
OCEANIA	5,730	5,794	6,334	9,015	7,180	5,775	7,045	9,286	5,858
Australia	5,284	5,261	5,784	8,090	6,435	5,063	6,110	8,216	5,087
New Zealand	0	519	541	910	672	633	754	964	697
Other Countries	446	14	9	15	73	79	181	106	74
Tourist Arrivals by Surface	0	0	0	7,319	4,766	2,509	3,946	3,988	3,639
	<i>(Annual percentage change)</i>								
EUROPE	7.6	11.7	11.7	6.4	0.5	2.6	18.7	7.4	-35.5
ASIA	5.9	-1.4	4.5	15.5	-6.6	17.5	7.2	14.9	-38.5
AFRICA	5.2	-11.2	-74.2	25.2	-10.9	45.7	32.7	33.7	-35.0
AMERICAS	47.4	0.3	-0.6	16.9	-4.1	9.9	2.4	22.5	-22.9
OCEANIA	23.4	1.1	9.3	42.3	-20.4	-19.6	22.0	31.8	-36.9

1/ Surface arrivals figures are not included in the national average count of tourist arrivals

Source: Ministry of Tourism and Civil Aviation

Last update: 18th October, 2006

2005												2006								2005	2006	
Feb-05	Mar-05	Apr-05	May-05	Jun-05	Jul-05	Aug-05	Sep-05	Oct-05	Nov-05	Dec-05	Jan-06	Feb-06	Mar-06	Apr-06	May-06	Jun-06	Jul-06	Aug-06	Sep-06	Jan-Sep	Jan-Sep	
29,391	35,742	29,714	25,309	22,590	29,860	38,366	33,748	40,543	44,461	46,849	58,332	54,741	54,596	55,983	40,961	33,037	42,776	49,968	44,593	263,467	434,987	TOTAL TOURIST ARRIVALS ^{1/}
25,289	29,677	23,521	19,423	16,391	21,146	29,507	24,532	30,746	35,548	36,384	47,267	45,799	44,814	44,878	29,630	22,491	30,297	37,669	31,543	204,178	334,388	EUROPE
1,010	851	696	568	368	658	766	535	966	1,113	1,440	1,560	1,887	1,513	1,203	777	549	963	1,003	573	5,839	10,028	Austria
2,229	2,170	2,002	1,013	554	982	1,395	1,140	1,932	3,343	4,010	5,712	6,690	5,605	5,145	2,366	1,069	1,735	2,594	1,927	12,355	32,843	France
4,030	5,582	4,329	5,204	3,032	3,665	4,218	5,065	6,251	7,011	5,022	6,044	6,032	7,170	6,591	6,133	4,293	4,191	5,135	6,026	37,498	51,615	Germany
6,882	8,392	5,602	2,444	2,738	4,175	8,900	4,751	5,649	7,339	10,201	14,703	12,977	13,866	13,293	5,683	5,020	6,733	11,106	6,718	46,923	90,099	Italy
828	1,186	1,121	1,002	768	849	1,233	1,160	1,329	2,052	1,831	2,812	1,553	1,779	2,157	1,348	932	1,431	1,543	1,174	9,370	14,729	Russia
1,624	2,076	1,729	1,263	804	1,386	1,213	1,474	2,340	2,321	1,915	2,758	2,438	2,395	3,169	1,766	866	1,768	973	1,741	12,745	17,874	Switzerland
6,861	7,364	6,339	6,368	6,470	6,952	9,022	7,488	8,811	9,039	8,080	8,531	9,354	8,659	9,000	8,390	6,648	8,972	9,976	8,739	61,334	78,269	United Kingdom
1,825	2,056	1,703	1,561	1,657	2,479	2,760	2,919	3,468	3,330	3,885	5,147	4,868	3,827	4,320	3,167	3,114	4,504	5,339	6,645	18,114	38,931	Other Countries
3,144	4,470	4,895	4,695	4,986	7,240	7,485	7,572	8,283	7,475	8,631	9,477	7,616	7,887	8,780	9,722	8,759	10,488	10,441	10,962	47,513	84,132	ASIA
202	438	631	754	726	1,515	1,482	1,450	1,824	1,071	1,370	2,852	1,985	1,376	1,479	2,406	1,595	2,230	2,244	2,262	7,344	18,429	China
733	843	746	891	821	853	653	840	949	861	1,263	1,104	889	915	1,089	1,231	901	817	809	816	7,187	8,571	India
1,025	1,472	1,519	1,011	1,385	2,256	2,962	3,037	2,668	2,498	2,814	2,918	2,238	2,820	2,573	2,167	2,696	3,950	4,003	4,269	15,289	27,634	Japan
205	199	398	521	435	575	396	501	1,312	1,105	817	489	694	760	1,260	1,745	1,248	866	729	1,513	3,309	9,304	Korea
120	208	146	264	187	222	225	168	258	248	234	173	178	365	233	308	246	241	210	221	1,626	2,175	Malaysia
8	25	15	39	49	124	145	96	1	107	41	149	134	47	78	74	171	292	250	67	542	1,262	Saudi Arabia
141	393	271	251	312	301	240	275	306	242	399	259	295	415	355	331	434	340	296	277	2,311	3,002	Singapore
451	540	608	552	560	637	758	568	441	593	767	633	507	573	697	711	692	652	769	787	5,364	6,021	Srilanka
61	65	176	124	58	105	64	72	83	59	202	81	185	125	309	157	130	163	142	179	770	1,471	Thailand
198	287	385	288	453	652	560	565	441	691	724	819	511	491	707	592	646	937	989	571	3,771	6,263	Other Countries
239	423	294	214	224	221	242	332	270	279	434	263	222	279	483	295	305	274	363	335	2,477	2,819	AFRICA
167	328	227	130	155	152	135	232	189	180	315	175	133	169	354	216	231	153	224	264	1,708	1,919	S-Africa
72	95	67	84	69	69	107	100	81	99	119	88	89	110	129	79	74	121	139	71	769	900	Other Africa
485	612	516	499	526	581	606	676	703	740	910	876	700	1,043	1,078	762	706	799	784	764	4,891	7,512	AMERICAS
11	19	30	45	47	50	99	42	27	21	29	30	31	27	63	84	25	20	91	65	352	436	Brazil
99	107	120	77	94	111	103	108	163	155	192	222	180	215	217	136	131	144	133	123	916	1,501	Canada
343	441	331	326	346	371	367	463	458	508	625	572	442	690	721	476	488	567	478	514	3,242	4,948	U.S.A
32	45	35	51	39	49	37	63	55	56	64	52	47	111	77	66	62	68	82	62	381	627	Other Countries
234	560	488	478	463	672	526	636	541	419	490	449	404	573	764	552	776	918	711	989	4,408	6,136	OCEANIA
185	504	404	411	395	630	441	578	489	336	413	375	326	501	654	450	689	829	613	877	3,849	5,314	Australia
46	53	82	58	49	41	72	54	48	83	67	72	66	71	93	80	86	83	97	100	499	748	New Zealand
3	3	2	9	19	1	13	4	4	0	10	2	12	1	17	22	1	6	1	12	60	74	Other Countries
724	843	281	12	25	4	7	49	24	287	590	316	506	143	422	38	26	6	8	608	2,738	2,073	Tourist Arrivals by Surface
<i>(Annual percentage change)</i>																						
-49.8	-44.5	-47.0	-35.2	-30.6	-31.1	-30.2	-28.3	-22.5	-20.8	6.2	221.7	81.1	51.0	90.8	52.6	37.2	43.3	27.7	28.6	-42.8	63.8	EUROPE
-58.6	-44.9	-44.1	-55.1	-40.7	-32.2	-36.0	-28.7	-23.0	-22.4	4.8	213.2	142.2	76.4	79.4	107.1	75.7	44.9	39.5	44.8	-46.2	77.1	ASIA
-26.0	-9.4	-48.6	-45.3	-44.3	-45.4	-47.2	-30.1	-43.6	-26.0	-36.9	-8.7	-7.1	-34.0	64.3	37.9	36.2	24.0	50.0	0.9	-34.5	13.8	AFRICA
-33.5	-35.3	-42.5	-21.2	-15.3	-18.5	-14.8	3.2	-12.0	-25.7	10.6	124.6	44.3	70.4	108.9	52.7	34.2	37.5	29.4	13.0	-27.8	53.6	AMERICAS
-67.0	-33.5	-41.2	-34.2	-41.9	-34.6	-28.3	-28.2	-32.1	-43.6	-2.2	27.9	72.6	2.3	56.6	15.5	67.6	36.6	35.2	55.5	-39.2	39.2	OCEANIA

Table 4. Tourism Statistics, 1997 - 2006

	1997	1998	1999	2000	2001	2002	2003	2004	2005
Total arrivals	384,471	419,779	456,048	496,117	492,044	513,852	594,082	650,929	440,161
<i>Of which: Tourists</i>	365,563	395,725	429,666	467,154	460,984	484,680	563,593	616,716	395,320
Tourist bed nights ('000) ^{1/}	3,271	3,467	3,718	3,937	3,933	4,066	4,705	5,111	3,300
Average stay (days)	9.0	8.8	8.7	8.4	8.6	8.4	8.4	8.3	8.3
Bed capacity /beds in operation (Resorts&Hotels)	11,555	12,453	14,652	15,812	16,478	16,131	16,692	16,621	13,946
Total tourist expenditure (US\$ millions) ^{2/}	286	303	314	321	327	337	402	471	286
Tourist expenditure per arrival (US\$) ^{3/}	782	766	730	687	710	695	713	764	725
Tourist expenditure per night (US\$)	87	87	84	81	83	83	85	92	87
Number of resorts by lease holders (end-year) ^{4/}	73	79	84	86	87	87	87	87	87
Local	-	-	-	-	-	67	69	68	68
Foreign	-	-	-	-	-	10	7	5	6
Joint Venture	-	-	-	-	-	9	10	11	13
Other	-	-	-	-	-	1	1	3	-
Number of resorts by operators (end-year) ^{4/}	73	79	84	86	87	87	87	87	87
Local	-	-	-	-	-	46	50	49	44
Foreign	-	-	-	-	-	32	24	25	27
Joint Venture	-	-	-	-	-	9	13	13	16
Other	-	-	-	-	-	-	-	-	-
Bed-night capacity ('000)	4,217	4,546	5,348	5,788	6,015	5,887	6,092	6,083	5,093
Capacity utilization (in percent)	77.4	76.2	69.7	68.2	65.6	69.0	77.2	83.9	64.5
(Annual percentage change)									
Total arrivals	8.0	9.2	8.6	8.8	-0.8	4.4	15.6	9.6	-32.4
Of which: Tourists	7.9	8.3	8.6	8.7	-1.3	5.1	16.3	9.4	-35.9
Tourist bed nights ('000)	7.6	6.0	7.3	5.9	-0.1	3.4	15.7	8.6	-35.4
Bed capacity /beds in operation (Resorts&Hotels)	1.2	7.8	17.7	7.9	4.2	-2.1	3.5	-0.4	-16.1
Bed-night capacity ('000)	0.9	7.8	17.7	8.2	3.9	-2.1	3.5	-0.1	-16.3

1/ These include bed capacity in resorts, hotels & safari yachts.

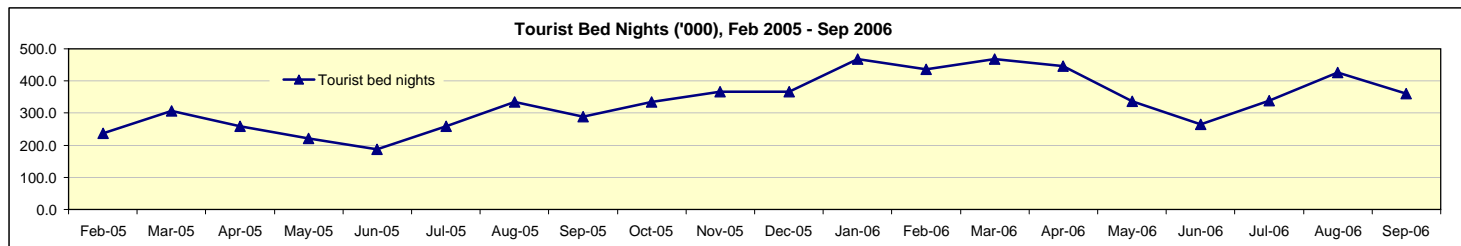
2/ These are estimates made by MMA for tourist expenditure for travel component of the balance of payments statistics

3/ The series have been revised in May 1999 as previously tourist expenditure per arrival is derived by dividing total tourist expenditure by the total arrivals, not tourist arrivals. Revised series reflects total tourist expenditure divided by tourist arrivals.

4/ Figures prior to 2002 are not available on a comparable basis

Source: Ministry of Tourism and Civil Aviation and Maldives Monetary Authority.

2005												2006								2005	2006	
Feb-05	Mar-05	Apr-05	May-05	Jun-05	Jul-05	Aug-05	Sep-05	Oct-05	Nov-05	Dec-05	Jan-06	Feb-06	Mar-06	Apr-06	May-06	Jun-06	Jul-06	Aug-06	Sep-06	Jan-Sep	Jan-Sep	
33,122	38,990	32,956	32,957	26,407	33,704	38,675	37,120	43,720	48,290	50,874	62,880	58,080	58,230	59,957	46,024	37,599	47,348	54,268	49,801	297,277	474,187	Total arrivals
29,391	35,742	29,714	25,309	22,590	29,860	38,366	33,748	40,543	44,461	46,849	58,332	54,741	54,596	55,983	40,961	33,037	42,776	49,968	44,593	263,467	434,987	Of which: Tourists
238	307	259	221	187	260	335	289	335	367	367	468	436	468	446	336	265	340	427	361	2,231	3,546	Tourist bed nights ('000) ^{1/}
8.1	8.6	8.7	8.7	8.3	8.7	8.7	8.6	8.3	8.3	7.8	8.0	8.0	8.6	8.0	8.2	8.0	7.9	8.5	8.1	8.4	8.1	Average stay (days)
13,076	13,438	13,958	13,674	13,450	13,598	13,930	14,194	14,358	14,368	15,886	15,886	15,956	16,094	16,142	16,142	15,574	15,764	15,910	16,402	13,638	15,986	Bed capacity /beds in operation (Resorts&Hotels)
-	-	-	-	-	-	-	-	-	-	-	-	-	-	-	-	-	-	-	-	-	-	Total tourist expenditure (US\$ millions) ^{2/}
-	-	-	-	-	-	-	-	-	-	-	-	-	-	-	-	-	-	-	-	-	-	Tourist expenditure per arrival (US\$) ^{3/}
-	-	-	-	-	-	-	-	-	-	-	-	-	-	-	-	-	-	-	-	-	-	Tourist expenditure per night (US\$)
-	-	-	-	-	-	-	-	-	-	-	-	-	-	-	-	-	-	-	-	-	-	Number of resorts by lease holders (end-year) ^{4/}
-	-	-	-	-	-	-	-	-	-	-	-	-	-	-	-	-	-	-	-	-	-	Local
-	-	-	-	-	-	-	-	-	-	-	-	-	-	-	-	-	-	-	-	-	-	Foreign
-	-	-	-	-	-	-	-	-	-	-	-	-	-	-	-	-	-	-	-	-	-	Joint Venture
-	-	-	-	-	-	-	-	-	-	-	-	-	-	-	-	-	-	-	-	-	-	Other
-	-	-	-	-	-	-	-	-	-	-	-	-	-	-	-	-	-	-	-	-	-	Number of resorts by operators (end-year) ^{4/}
-	-	-	-	-	-	-	-	-	-	-	-	-	-	-	-	-	-	-	-	-	-	Local
-	-	-	-	-	-	-	-	-	-	-	-	-	-	-	-	-	-	-	-	-	-	Foreign
-	-	-	-	-	-	-	-	-	-	-	-	-	-	-	-	-	-	-	-	-	-	Joint Venture
-	-	-	-	-	-	-	-	-	-	-	-	-	-	-	-	-	-	-	-	-	-	Other
366	417	419	424	404	422	432	426	445	431	492	492	447	499	484	500	467	489	493	492	3,724	4,364	Bed-night capacity ('000)
64.9	73.7	61.9	52.1	46.3	61.6	77.5	68.0	75.3	85.1	74.5	95.1	97.5	93.7	92.2	67.1	56.7	69.5	86.5	73.4	59.8	81.3	Capacity utilization (in percent)
(Annual percentage change)																						
-46.5	-41.1	-40.5	-27.4	-28.8	-28.0	-34.2	-25.9	-21.6	-19.1	5.5	169.3	75.4	49.3	81.9	39.6	42.4	40.5	40.3	34.2	-39.0	59.5	Total arrivals
-50.8	-44.0	-46.4	-40.0	-33.2	-31.4	-31.3	-27.9	-22.8	-21.5	5.3	211.2	86.3	52.8	88.4	61.8	46.2	43.3	30.2	32.1	-43.1	65.1	Of which: Tourists
-51.9	-40.1	-44.1	-37.6	-32.6	-29.7	-27.8	-25.8	-21.7	-16.7	-7.2	245.5	83.4	52.4	72.1	52.0	41.7	30.8	27.5	24.8	-42.0	59.0	Tourist bed nights ('000)
-22.5	-20.4	-18.2	-18.6	-16.5	-16.1	-14.0	-11.7	-12.9	-14.8	-7.3	18.3	22.0	19.8	15.6	18.0	15.8	15.9	14.2	15.6	-17.6	17.2	Bed capacity /beds in oper. (Resorts&Hotels)
-25.2	-20.4	-18.2	-18.6	-16.5	-16.1	-14.0	-11.7	-12.9	-14.8	-7.3	18.3	22.0	19.8	15.6	18.0	15.8	15.9	14.2	15.6	-17.9	17.2	Bed-night capacity ('000)



												2006									2005	2006		
Feb-05	Mar-05	Apr-05	May-05	Jun-05	Jul-05	Aug-05	Sep-05	Oct-05	Nov-05	Dec-05	Jan-06	Feb-06	Mar-06	Apr-06	May-06	Jun-06	Jul-06	Aug-06	Sep-06	Jan-Sep	Jan-Sep			
13.2	15.7	16.3	16.9	12.4	16.0	15.4	12.3	13.4	20.7	19.7	20.4	18.8	na	na	na	na	na	na	na	132.2	na	Total catch (include EEZ) ^{1/}		
12.8	15.4	15.8	16.6	12.3	15.8	15.2	12.0	13.2	20.5	19.5	20.3	18.7	15.3	20.3	9.8	9.9	5.7	10.0	6.9	129.7	116.9	Fish catch		
9.0	10.4	12.1	12.9	7.6	11.0	10.6	8.0	9.4	16.6	14.9	na	na	na	na	na	na	na	na	na	91.1	na	Skipjack		
1.7	2.1	1.8	1.6	2.1	1.8	1.9	1.4	1.4	1.7	2.1	na	na	na	na	na	na	na	na	na	16.5	na	Yellow fin		
0.4	0.4	0.5	0.8	1.0	1.1	0.9	0.7	0.5	0.7	0.9	na	na	na	na	na	na	na	na	na	6.2	na	Other tuna		
1.7	2.5	1.5	1.3	1.5	1.9	1.8	1.9	1.8	1.5	1.6	na	na	na	na	na	na	na	na	na	15.9	na	Reef and bottom fish		
0.3	0.3	0.5	0.3	0.1	0.2	0.2	0.2	0.2	0.2	0.2	0.1	0.1	na	na	na	na	na	na	na	2.5	na	EEZ		
6.4	7.5	8.7	7.7	4.4	4.1	5.1	5.1	6.2	12.8	10.4	11.4	10.4	6.8	15.0	10.2	8.7	2.0	6.5	6.3	54.5	77.3	Fish purchases (m/t) ^{2/}		
0.3	0.1	0.1	0.2	0.2	0.1	0.4	0.2	0.6	0.5	0.8	0.9	1.0	1.0	0.8	0.4	0.2	0.1	0.3	0.5	2.5	5.2	Zone 1		
0.2	0.2	0.3	0.1	0.1	0.1	0.6	0.3	1.2	2.0	1.2	1.3	1.2	1.4	0.9	0.3	0.2	0.2	1.0	0.8	2.4	7.2	Zone 2		
1.5	1.6	2.3	2.2	1.5	1.5	2.1	1.2	2.1	3.0	1.8	1.2	0.6	0.6	2.7	2.2	2.0	0.7	0.8	0.7	16.0	11.6	Zone 3		
4.3	5.6	6.0	5.1	2.5	2.3	1.9	3.4	2.3	7.3	6.7	8.0	7.6	3.8	10.5	7.3	6.2	1.0	4.5	4.4	33.6	53.3	Zone 4		
(Annual percentage change)																								
-5.4	-0.8	39.8	107.6	30.0	30.7	-3.5	2.7	-22.5	31.5	44.3	na	na	na	na	na	na	na	na	na	18.1	na	Total catch (include EEZ)		
-6.8	-1.8	35.9	106.3	30.6	31.9	-3.4	3.6	-22.3	33.2	46.7	47.3	46.0	-0.9	28.0	-40.5	-19.6	-63.8	-34.1	-43.0	17.6	-9.9	Fish catch		
-5.2	-12.1	48.0	135.6	25.4	40.3	-5.0	5.6	-27.1	47.7	53.6										20.1		Skipjack		
-26.6	29.9	4.9	45.3	33.0	-17.3	-12.4	-21.6	-21.1	-16.8	23.6										-3.3		Yellow fin		
-19.5	-16.0	4.1	48.2	82.1	67.8	10.6	-2.5	-15.4	51.2	133.6										21.7		Other tuna		
19.5	41.7	11.3	40.9	29.4	47.3	13.5	26.8	12.0	-8.6	6.7										29.0		Reef and bottom fish		
127.0	150.4	984.7	216.4	-7.2	-27.4	-12.0	-29.4	-34.9	-49.2	-52.0	na	na	na	na	na	na	na	na	na	58.3	na	EEZ		
6.0	-10.8	76.7	218.2	84.0	1.5	-13.4	21.6	-29.3	83.9	58.2	105.8	63.1	-10.2	73.0	32.1	97.8	-50.5	27.7	24.4	31.0	41.9	Fish purchases (m/t)		
-46.9	-30.8	-77.7	764.6	100.4	-71.6	-42.3	-28.6	102.8	-37.3	8.8	20.4	178.6	626.2	1051.1	73.5	-1.6	-36.1	-31.4	124.0	-27.6	106.9	Zone 1		
-52.7	-42.0	20.7	178.2	-45.4	-80.8	18.2	-40.9	174.3	152.7	115.1	230.6	491.9	454.6	207.0	108.6	59.9	139.4	52.5	170.6	-21.1	202.6	Zone 2		
285.4	29.8	190.6	363.0	93.3	7.7	10.6	-5.3	-6.6	67.4	43.8	-38.6	-60.8	-61.8	18.0	-0.4	35.6	-52.2	-63.1	-45.7	82.1	-27.6	Zone 3		
-4.5	-15.6	69.5	173.5	96.0	40.6	-29.6	58.8	-60.5	103.7	64.2	231.8	75.7	-32.5	75.5	42.3	145.7	-56.9	131.5	30.6	27.7	58.6	Zone 4		

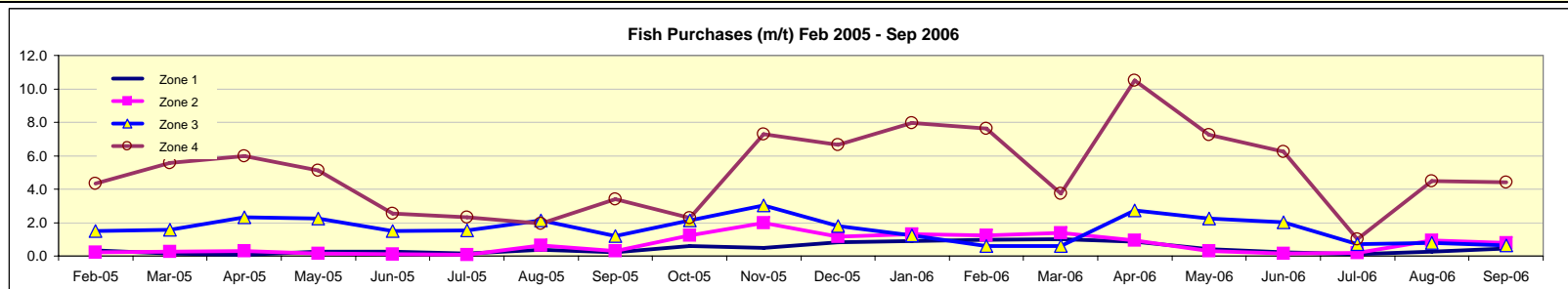


Table 6. Changes in Consumer Price Index (CPI), 1997 - 2006*Index (June 1995 = 100)*

	Base weight	1997	1998	1999	2000	2001	2002	2003	2004	2005
Total CPI	100.00	114.2	112.6	116.0	114.6	115.4	116.4	113.1	120.3	124.3
Food, beverages and tobacco products		128.5	122.4	127.6	121.4	123.9	128.4	120.6	139.9	142.9
Food beverages and tobacco products (excluding fish)	30.83	110.0	114.3	120.1	107.5	118.5	125.4	118.3	131.2	131.4
Fish Index	6.04	222.9	173.1	165.8	192.6	151.9	143.6	132.3	184.3	201.1
Clothing and footwear	9.78	101.1	108.9	105.6	102.6	101.6	97.7	97.5	95.5	95.5
Housing, water, fuel and power	14.91	98.5	97.6	103.6	106.6	108.4	106.8	105.9	103.7	110.0
Furniture, furnishing, household equipment & operation	8.31	105.2	110.4	114.9	114.7	110.4	108.7	106.7	107.0	109.5
Medical care and health expenses	2.48	109.1	106.3	100.4	107.4	107.9	108.2	106.2	106.6	106.6
Transport and communication	11.01	121.6	119.8	118.9	122.9	123.1	124.4	121.6	125.4	137.7
Education	8.61	106.4	105.5	113.4	115.2	115.7	116.2	119.0	120.1	122.1
Recreation, entertainment, religious and cultural services	3.15	98.1	97.6	100.7	100.7	98.3	100.1	100.1	98.1	98.2
Personal care	4.88	106.7	105.4	104.1	104.1	104.6	103.4	102.9	106.2	109.8
Total CPI (excluding food)		105.9	106.9	109.2	110.6	110.4	109.4	108.7	108.9	113.5
Total CPI (excluding fish)	93.96	107.2	109.3	112.8	109.6	113.0	114.7	111.9	116.2	119.4
<i>(year to year % change)</i>										
Total CPI		7.6	-1.4	3.0	-1.2	0.7	0.9	-2.9	6.4	3.3
Total CPI (excluding food)		0.5	0.9	2.1	1.3	-0.2	-0.8	-0.7	0.2	4.2
Total CPI (excluding fish)		2.0	1.9	3.1	-2.8	3.1	1.5	-2.5	3.9	2.7
<i>(moving average % change)</i>										
Total CPI		7.6	-1.4	3.0	-1.2	0.7	0.9	-2.9	6.4	3.3
Food, beverages and tobacco products		19.5	-4.7	4.2	-4.8	2.1	3.6	-6.1	16.0	2.1
Food beverages and tobacco products (excluding fish)		3.5	3.9	5.1	-10.5	10.2	5.9	-5.7	10.9	0.2
Fish Index		95.3	-22.4	-4.2	16.2	-21.1	-5.5	-7.9	39.3	9.1
Clothing and footwear		4.2	7.7	-3.0	-2.9	-1.0	-3.9	-0.2	-2.0	0.0
Housing, water, fuel and power		-1.7	-0.9	6.2	2.9	1.7	-1.4	-0.9	-2.1	6.2
Furniture, furnishing, household equipment & operation		-3.3	4.9	4.1	-0.2	-3.8	-1.6	-1.9	0.3	2.4
Medical care and health expenses		-1.1	-2.6	-5.6	7.0	0.5	0.3	-1.8	0.4	0.0
Transport and communication		0.6	-1.5	-0.7	3.3	0.2	1.0	-2.2	3.1	9.8
Education		3.8	-0.9	7.5	1.5	0.5	0.4	2.4	0.9	1.7
Recreation, entertainment, religious and cultural services		0.0	-0.4	3.1	0.1	-2.4	1.9	0.0	-2.0	0.1
Personal care		1.6	-1.3	-1.2	0.0	0.5	-1.2	-0.4	3.2	3.4
Total CPI (excluding food)		0.5	0.9	2.1	1.3	-0.2	-0.8	-0.7	0.2	4.2
Total CPI (excluding fish)		2.0	1.9	3.1	-2.8	3.1	1.5	-2.5	3.9	2.7

Source: Ministry of Planning and National Development

2005											2006									
Feb-05	Mar-05	Apr-05	May-05	Jun-05	Jul-05	Aug-05	Sep-05	Oct-05	Nov-05	Dec-05	Jan-06	Feb-06	Mar-06	Apr-06	May-06	Jun-06	Jul-06	Aug-06	Sep-06	
123.6	122.2	123.8	126.5	125.4	123.9	123.1	127.8	131.9	123.3	118.9	124.0	123.6	125.6	129.7	128.7	129.8	129.0	129.1	139.0	Total CPI
143.0	138.0	141.8	149.4	146.5	142.8	140.3	152.2	161.3	136.6	124.8	138.6	137.2	142.8	153.7	150.7	153.4	148.8	148.5	170.4	Food, beverages and tobacco products
133.7	131.9	125.9	126.3	130.4	129.5	128.8	136.3	147.4	130.9	126.6	137.9	137.0	131.7	144.9	144.8	139.0	140.8	139.8	148.7	Food beverages and tobacco products (excluding fish)
190.6	168.9	222.9	267.5	228.7	210.7	199.4	233.2	231.9	165.7	115.7	142.0	138.2	199.6	198.3	180.5	227.1	189.5	192.8	281.4	Fish Index
97.7	97.0	97.0	96.2	95.0	94.5	94.5	94.0	92.0	95.4	95.4	95.5	96.1	96.3	96.7	96.7	95.7	95.5	95.5	96.8	Clothing and footwear
106.6	109.1	109.6	109.6	109.5	108.8	109.3	110.2	113.3	114.1	114.1	114.3	114.4	114.1	114.3	114.5	115.5	120.4	121.6	132.4	Housing, water, fuel and power
109.0	109.0	109.0	109.0	109.4	109.5	109.5	110.4	110.1	110.0	109.9	109.9	110.0	109.2	109.3	109.3	109.4	109.7	110.3	109.6	Furniture, furnishing, household equipment & operation
107.1	107.0	107.0	107.0	107.0	107.0	107.0	106.9	105.4	105.4	105.4	105.4	106.7	106.7	106.7	106.7	106.7	106.7	106.7	116.1	Medical care and health expenses
134.9	135.9	136.2	136.2	136.2	136.7	137.0	137.9	142.0	142.0	142.1	142.1	142.1	142.1	142.6	143.9	143.7	144.5	144.5	144.4	Transport and communication
121.8	122.0	122.1	122.3	122.3	122.3	122.3	122.1	122.4	122.7	122.7	122.7	122.7	122.7	122.7	122.7	122.7	122.7	122.7	122.7	Education
98.0	98.0	98.0	98.3	98.3	98.3	98.3	98.4	98.4	98.4	98.3	98.3	98.3	98.4	98.3	98.2	98.2	98.2	98.2	98.2	Recreation, entertainment, religious and cultural services
107.6	107.6	109.6	108.4	109.3	109.1	109.3	111.2	111.8	112.4	111.4	112.3	112.6	112.6	110.7	110.4	111.4	112.4	112.4	111.8	Personal care
112.2	112.9	113.2	113.1	113.0	112.8	113.0	113.5	114.7	115.4	115.4	115.5	115.7	115.6	115.6	115.9	116.0	117.4	117.8	120.7	Total CPI (excluding food)
119.3	119.1	117.4	117.4	118.7	118.3	118.2	121.0	125.4	120.5	119.1	122.9	122.7	120.9	125.2	125.4	123.6	125.1	125.0	129.9	Total CPI (excluding fish)
<i>(year to year % change)</i>																				
9.0	7.3	4.7	-0.2	3.5	3.0	4.9	7.9	-0.1	-2.2	-3.4	2.0	0.0	2.8	4.8	1.8	3.6	4.1	4.9	8.8	Total CPI
4.6	5.1	5.4	4.4	4.7	4.2	4.1	4.0	2.8	3.3	3.2	2.9	3.1	2.4	2.1	2.5	2.7	4.1	4.2	6.3	Total CPI (excluding food)
7.0	6.8	2.9	0.4	3.2	1.6	3.5	5.2	-1.1	-2.5	0.8	4.2	2.9	1.4	6.7	6.8	4.1	5.8	5.8	7.3	Total CPI (excluding fish)
<i>(moving average % change)</i>																				
7.5	8.0	8.0	7.0	6.8	6.6	6.7	6.9	5.6	4.4	3.3	2.9	2.2	1.8	1.9	2.0	2.0	2.1	2.1	2.2	Total CPI
17.2	17.6	16.5	13.3	12.1	11.0	10.7	10.6	7.6	4.7	2.1	1.4	-0.1	-0.6	-0.2	0.4	0.6	0.8	0.9	0.9	Food, beverages and tobacco products
12.1	12.7	11.9	10.0	8.7	7.5	7.0	6.9	3.8	1.1	0.2	0.1	-0.5	-1.3	0.0	1.7	2.2	3.1	3.6	3.8	Food beverages and tobacco products (excluding fish)
40.2	39.2	36.2	26.8	25.7	24.7	25.4	25.0	22.2	18.4	9.1	5.9	1.4	1.9	-0.9	-4.1	-4.7	-6.8	-8.4	-8.7	Fish Index
-0.8	-0.4	0.2	0.7	1.0	1.3	1.6	1.5	0.8	0.5	0.0	-0.5	-1.0	-1.4	-1.7	-1.8	-1.8	-1.6	-1.4	-0.9	Clothing and footwear
-0.8	0.2	1.1	1.6	2.5	3.2	3.9	4.5	5.1	5.6	6.2	6.5	6.7	6.5	6.2	6.2	6.1	6.6	7.0	8.3	Housing, water, fuel and power
1.4	2.0	2.4	2.6	2.8	2.9	3.0	2.9	2.8	2.6	2.4	2.1	1.9	1.7	1.5	1.3	1.0	0.8	0.7	0.5	Furniture, furnishing, household equipment & operation
0.6	0.7	0.8	0.9	0.9	1.0	0.9	0.7	0.5	0.2	0.0	-0.3	-0.4	-0.5	-0.5	-0.6	-0.7	-0.8	-0.8	-0.1	Medical care and health expenses
4.9	5.9	6.9	7.7	8.6	9.5	10.4	11.3	10.9	10.3	9.8	9.3	8.8	8.2	7.6	7.2	6.7	6.3	5.8	5.2	Transport and communication
0.8	0.9	0.9	1.0	1.1	1.2	1.3	1.4	1.5	1.6	1.7	1.8	1.7	1.6	1.5	1.4	1.2	1.1	1.0	0.9	Education
-1.8	-1.7	-1.4	-1.1	-0.8	-0.6	-0.3	-0.2	-0.1	0.0	0.1	0.2	0.3	0.4	0.4	0.4	0.3	0.3	0.2	0.2	Recreation, entertainment, religious and cultural services
3.1	2.9	2.6	2.3	2.3	2.2	2.1	2.4	2.7	3.1	3.4	3.2	3.4	3.6	3.4	3.4	3.4	3.4	3.5	3.1	Personal care
1.1	1.7	2.2	2.6	3.1	3.5	3.9	4.2	4.2	4.2	4.2	4.0	3.9	3.7	3.4	3.3	3.1	3.1	3.1	3.3	Total CPI (excluding food)
4.9	5.5	5.6	5.2	5.1	5.0	5.0	5.2	4.1	3.1	2.7	2.6	2.3	1.8	2.1	2.7	2.7	3.1	3.3	3.5	Total CPI (excluding fish)

Table 7. Summary of Central Government Finance, 1997 - 2006*(In millions of rufiyaa)*

	1997	1998	1999	2000	2001	2002	2003	2004	2005 <i>Prov. Est</i>	2006 <i>Bgt. Est</i>
Total revenue and grants	1,824.7	1,930.2	2,225.3	2,372.7	2,522.6	2,714.9	3,087.9	3,424.7	4,542.6	6,548.8
Current revenue	1,652.0	1,763.6	2,058.6	2,202.6	2,294.3	2,577.9	2,936.8	3,331.1	3,626.6	4,821.8
Capital revenue	4.5	2.1	4.0	4.2	16.6	4.5	27.5	20.7	34.3	31.7
Grants	168.2	164.5	162.7	165.9	211.7	132.5	123.6	72.9	881.7	1,695.3
Expenditure and net lending	1,906.0	2,053.3	2,506.4	2,694.2	2,885.9	3,117.3	3,388.2	3,582.6	5,739.9	8,644.7
Current expenditure	1,182.0	1,297.9	1,545.5	1,875.9	1,971.4	2,109.4	2,345.7	2,788.1	4,240.1	4,993.4
Capital expenditure	754.9	816.0	949.4	864.0	940.7	1,026.1	1,206.2	991.0	1,590.8	3,716.4
Net lending	-30.9	-60.6	11.5	-45.7	-26.2	-18.2	-163.7	-196.5	-91.0	-65.1
Overall balance	-81.3	-123.1	-281.1	-321.5	-363.3	-402.4	-300.3	-157.9	-1,197.3	-2,095.9
Overall balance excluding grants	-249.5	-287.6	-443.8	-487.4	-575.0	-534.9	-423.9	-230.8	-2,079.0	-3,791.2
Current balance	470.0	465.7	513.1	326.7	322.9	468.5	591.1	543.0	-613.5	-171.6
Foreign financing	172.2	129.3	56.7	3.6	145.8	372.4	419.2	403.7	316.2	1,759.1
Domestic financing	-90.9	-6.2	224.4	317.9	217.5	30.0	-118.9	-245.8	881.1	336.8
Total debt	2,373.0	2,605.5	2,782.9	3,002.9	3,326.4	3,856.9	4,087.6	4,282.8	5,066.5	7,122.5
Of which: Foreign	1,495.9	1,625.2	1,681.9	1,685.5	1,831.3	2,203.7	2,622.9	3,026.6	3,342.8	5,101.9
(In Percent Of GDP)										
Total revenue and grants	30.5	30.4	32.1	32.3	33.0	33.1	34.8	34.5	46.4	54.1
Current revenue	27.6	27.7	29.7	30.0	30.0	31.4	33.1	33.5	37.0	39.9
Capital revenue	0.1	0.0	0.1	0.1	0.2	0.1	0.3	0.2	0.4	0.3
Grants	2.8	2.6	2.3	2.3	2.8	1.6	1.4	0.7	9.0	14.0
Expenditure and net lending	31.9	32.3	36.1	36.7	37.7	38.0	38.2	36.0	58.6	71.5
Current expenditure	19.8	20.4	22.3	25.5	25.8	25.7	26.5	28.1	43.3	41.3
Capital expenditure	12.6	12.8	13.7	11.8	12.3	12.5	13.6	10.0	16.2	30.7
Net lending	-0.5	-1.0	0.2	-0.6	-0.3	-0.2	-1.8	-2.0	-0.9	-0.5
Overall balance	-1.4	-1.9	-4.1	-4.4	-4.7	-4.9	-3.4	-1.6	-12.2	-17.3
Overall balance excluding grants	-4.2	-4.5	-6.4	-6.6	-7.5	-6.5	-4.8	-2.3	-21.2	-31.3
Current balance	7.9	7.3	7.4	4.4	4.2	5.7	6.7	5.5	-6.3	-1.4
Foreign financing	2.9	2.0	0.8	0.0	1.9	4.5	4.7	4.1	3.2	14.5
Domestic financing	-1.5	-0.1	3.2	4.3	2.8	0.4	-1.3	-2.5	9.0	2.8
Total debt (end of period)	39.7	41.0	40.1	40.9	43.5	47.0	46.1	43.1	51.7	58.9
Of which: Foreign	25.0	25.6	24.3	22.9	23.9	26.9	29.6	30.5	34.1	42.2
<i>Memorandum item:</i>										
Nominal GDP (million of Rufiyaa)	5,982	6,357	6,935	7,348	7,651	8,201	8,863	9,939	9,799	12,094

Source: Ministry of Finance and Treasury

1997	1998	1999	2000	2001	2002	2003	2004	2005 <i>Prov. Est</i>	2006 <i>Bgt. Est</i>	
<i>(Annual percentage change)</i>										
16.4	5.8	15.3	6.6	6.3	7.6	13.7	10.9	32.6	44.2	Total revenue and grants
25.0	6.8	16.7	7.0	4.2	12.4	13.9	13.4	8.9	33.0	Current revenue
36.4	-53.3	90.5	5.0	295.2	-72.9	511.1	-24.7	65.7	-7.6	Capital revenue
-30.8	-2.2	-1.1	2.0	27.6	-37.4	-6.7	-41.0	1109.5	92.3	Grants
12.0	7.7	22.1	7.5	7.1	8.0	8.7	5.7	60.2	50.6	Expenditure and net lending
23.7	9.8	19.1	21.4	5.1	7.0	11.2	18.9	52.1	17.8	Current expenditure
2.4	8.1	16.3	-9.0	8.9	9.1	17.6	-17.8	60.5	133.6	Capital expenditure
-443.3	96.1	-119.0	-497.4	-42.7	-30.5	799.5	20.0	-53.7	-28.5	Net lending
-39.2	51.4	128.4	14.4	13.0	10.8	-25.4	-47.4	658.3	75.1	Overall balance
-33.8	15.3	54.3	9.8	18.0	-7.0	-20.8	-45.6	800.8	82.4	Overall balance excluding grants
28.3	-0.9	10.2	-36.3	-1.2	45.1	26.2	-8.1	-213.0	-72.0	Current balance
5.6	-24.9	-56.1	-93.7	3950.0	155.4	12.6	-3.7	-21.7	456.3	Foreign financing
211.3	-93.2	-3719.4	41.7	-31.6	-86.2	-496.3	106.7	-458.5	-61.8	Domestic financing
4.0	9.8	6.8	7.9	10.8	15.9	6.0	4.8	18.3	40.6	Total debt
13.0	8.6	3.5	0.2	8.7	20.3	19.0	15.4	10.4	52.6	Of which: Foreign

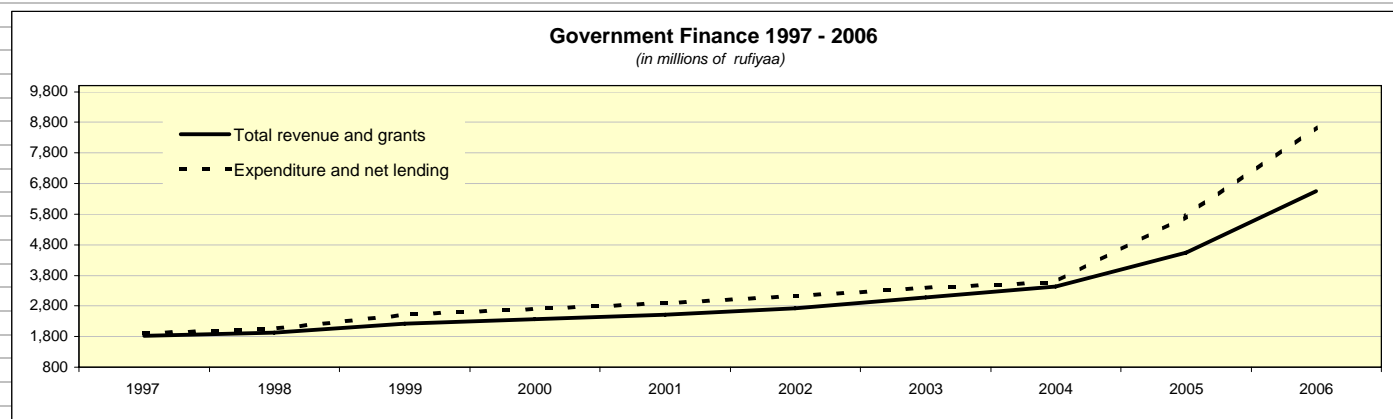


Table 8. Monetary Survey, 1997 - 2006*(In millions of rufiyaa; end of period)*

	1997	1998	1999	2000	2001	2002	2003	2004	2005
Net foreign assets	1,141.9	1,483.9	1,398.8	1,306.9	1,147.0	1,655.3	2,604.3	3,357.1	1,787.7
Monetary Authorities (net)	1,156.8	1,394.9	1,495.6	1,445.1	1,190.9	1,704.1	2,041.2	2,605.1	2,303.5
Foreign assets ^{1/}	1,166.9	1,405.0	1,505.8	1,455.3	1,201.0	1,714.3	2,051.4	2,616.1	2,394.9
Foreign liabilities	-10.1	-10.1	-10.1	-10.2	-10.2	-10.2	-10.2	-11.0	-91.4
Commercial banks (net)	-14.8	89.1	-96.8	-138.2	-43.9	-48.8	563.1	752.0	-515.8
Foreign assets	135.3	278.4	224.7	257.5	318.5	411.2	775.7	1,010.6	603.3
Foreign liabilities	-150.2	-189.3	-321.4	-395.7	-362.4	-460.0	-212.6	-258.6	-1,119.1
Domestic assets (net)	1,134.3	1,315.9	1,499.8	1,712.6	2,146.2	2,280.8	1,903.2	2,626.6	4,897.2
Domestic credit	1,736.8	2,062.6	2,228.1	2,556.5	3,058.4	3,415.3	3,210.4	4,239.6	6,904.9
Public sector	740.0	809.4	925.3	1,149.4	1,231.1	1,314.5	965.9	698.3	1,430.9
Central govt. (net)	636.4	644.3	729.0	964.7	1,047.1	1,103.5	875.6	456.3	953.0
Gross claims on govt.	920.1	1,024.4	1,156.1	1,409.0	1,584.5	1,704.3	1,542.8	1,312.7	1,630.5
Govt. deposits ^{2/}	283.7	380.0	427.1	444.3	537.4	600.8	667.3	856.5	677.6
Public enterprises	103.6	165.1	196.3	184.7	184.0	211.0	90.4	242.0	477.9
Private sector	996.8	1,253.2	1,302.8	1,407.1	1,827.2	2,100.8	2,244.4	3,541.3	5,474.1
Other items (net)	-602.5	-746.7	-728.3	-843.9	-912.2	-1,134.6	-1,307.2	-1,613.0	-2,007.7
Broad money	2,276.2	2,799.9	2,898.6	3,019.5	3,293.2	3,936.0	4,507.5	5,983.7	6,685.0
Narrow money	1,168.2	1,355.5	1,554.0	1,730.1	1,624.4	1,856.3	2,069.1	2,476.9	3,033.3
Currency in circulation	489.7	524.9	593.3	618.1	566.5	569.9	624.9	762.5	883.2
Public ent. deposits (Rf) ^{3/}	59.3	105.1	24.7	37.6	35.8	33.5	45.4	51.9	44.3
Demand deposits	619.2	725.4	935.9	1,074.4	1,022.1	1,253.0	1,398.8	1,662.5	2,105.8
Quasi money	1,108.0	1,444.4	1,344.6	1,289.4	1,668.8	2,079.7	2,438.4	3,506.8	3,651.7
<i>(Twelve month percentage change)</i>									
Net foreign assets	39.4	29.9	-5.7	-6.6	-12.2	44.3	57.3	28.9	-46.7
Monetary Authorities (net)	61.7	20.6	7.2	-3.4	-17.6	43.1	19.8	27.6	-11.6
Commercial banks (net)	-114.3	-701.0	-208.7	42.8	-68.3	11.3	-1253.6	33.6	-168.6
Domestic credit	8.9	18.8	8.0	14.7	19.6	11.7	-6.0	32.1	62.9
Public sector	-15.7	9.4	14.3	24.2	7.1	6.8	-26.5	-27.7	104.9
Central govt. (net)	-12.0	1.2	13.1	32.3	8.5	5.4	-20.7	-47.9	108.9
Private sector	38.9	25.7	4.0	8.0	29.9	15.0	6.8	57.8	54.6
Broad money	23.3	23.0	3.5	4.2	9.1	19.5	14.5	32.8	11.7
Narrow money	13.0	16.0	14.6	11.3	-6.1	14.3	11.5	19.7	22.5
Currency in circulation	15.0	7.2	13.0	4.2	-8.3	0.6	9.7	22.0	15.8
Memorandum items:									
Foreign currency deposits	1,021.7	1,302.1	1,211.6	1,087.0	1,484.7	1,870.8	2,320.3	3,344.3	3,441.2
Dollarization ratio ^{4/}	44.9	46.5	41.8	36.0	45.1	47.5	51.5	55.9	51.5

1/ Series revised on 23rd Jan 2006 - to exclude gold and silver coin from foreign assets.

2/ Series revised on 23rd Jan 2006 - to include atoll deposits.

3/ Series revised on 23rd Jan 2006 - to exclude atoll deposits.

4/ Foreign currency deposits in percent of broad money.

note: August 2006 revised on October 2006

Source: Maldives Monetary Authority

Last update: 29th October, 2006

2005											2006									
Feb-05	Mar-05	Apr-05	May-05	Jun-05	Jul-05	Aug-05	Sep-05	Oct-05	Nov-05	Dec-05	Jan-06	Feb-06	Mar-06	Apr-06	May-06	Jun-06	Jul-06	Aug-06	Sep-06	
2,669.9	2,807.8	2,441.8	2,515.7	2,776.4	2,804.2	2,249.0	1,904.0	1,774.9	1,977.5	1,787.7	1,959.3	1,938.3	1,936.6	2,290.7	2,712.2	2,366.5	2,225.6	1,857.2	1,697.6	Net foreign assets
2,679.8	2,747.0	2,573.4	2,666.4	2,748.4	2,745.1	2,688.3	2,506.3	2,449.1	2,472.4	2,303.5	2,484.8	2,490.7	2,458.9	2,731.2	2,890.6	2,643.0	2,821.0	2,885.8	3,023.8	Monetary Authorities (net)
2,691.0	2,837.7	2,664.8	2,757.8	2,839.8	2,836.5	2,779.7	2,597.7	2,540.5	2,563.8	2,394.9	2,576.2	2,582.1	2,550.3	2,822.7	2,982.0	2,734.4	2,912.4	2,977.2	3,115.2	Foreign assets ^{1/}
-11.1	-90.7	-91.4	-91.4	-91.4	-91.4	-91.4	-91.4	-91.4	-91.4	-91.4	-91.4	-91.4	-91.4	-91.4	-91.4	-91.4	-91.4	-91.4	-91.4	Foreign liabilities
-10.0	60.9	-131.5	-150.7	27.9	59.0	-439.2	-602.2	-674.2	-494.9	-515.8	-525.5	-552.4	-522.3	-440.5	-178.4	-276.5	-595.4	-1,028.6	-1,326.2	Commercial banks (net)
770.4	589.3	797.0	670.7	629.2	762.0	600.3	517.9	667.7	591.7	603.3	659.6	612.5	630.1	756.1	894.5	950.5	930.4	695.3	770.3	Foreign assets
-780.3	-528.4	-928.5	-821.4	-601.2	-703.0	-1,039.5	-1,120.1	-1,341.9	-1,086.6	-1,119.1	-1,185.0	-1,164.9	-1,152.4	-1,196.6	-1,073.0	-1,226.9	-1,525.8	-1,723.9	-2,096.5	Foreign liabilities
3,278.9	3,094.0	3,519.0	3,680.1	3,549.2	3,854.5	4,190.2	4,362.5	4,566.5	4,654.2	4,897.2	5,024.1	5,215.2	5,215.0	5,238.2	4,998.4	5,334.4	5,221.2	5,588.0	5,833.6	Domestic assets (net)
4,576.5	4,679.9	5,017.9	5,293.9	5,269.3	5,430.8	5,951.4	6,179.5	6,479.9	6,621.9	6,904.9	6,837.8	7,142.9	7,122.1	7,221.5	7,022.3	7,368.3	7,220.8	7,630.2	7,901.1	Domestic credit
836.6	884.0	1,128.0	1,130.9	1,074.2	1,124.2	1,281.4	1,357.8	1,352.6	1,279.2	1,430.9	1,255.4	1,450.0	1,399.3	1,360.3	1,413.2	1,473.7	1,146.1	1,189.7	966.7	Public sector
541.6	626.0	745.4	815.4	734.3	751.0	815.1	889.0	924.4	886.6	953.0	852.3	1,023.6	962.4	988.5	1,114.5	1,125.4	737.6	709.3	522.6	Central govt. (net)
1,466.7	1,569.7	1,713.7	1,770.0	1,863.3	1,643.8	1,813.8	1,783.4	1,865.2	1,912.4	1,630.5	1,854.7	2,083.9	2,126.2	2,174.6	2,192.4	2,389.9	2,472.6	2,073.3	1,995.6	Gross claims on govt.
925.1	943.7	968.3	954.6	1,129.0	892.9	998.8	894.4	940.8	1,025.8	677.6	1,002.4	1,060.3	1,163.8	1,186.1	1,078.0	1,264.6	1,735.0	1,364.0	1,473.0	Govt. deposits ^{2/}
295.0	258.0	382.5	315.5	339.9	373.2	466.4	468.8	428.1	392.6	477.9	403.2	426.5	436.9	371.8	298.7	348.3	408.5	480.4	444.1	Public enterprises
3,739.9	3,795.9	3,889.9	4,163.0	4,195.1	4,306.7	4,669.9	4,821.8	5,127.4	5,342.7	5,474.1	5,582.3	5,692.8	5,722.8	5,861.2	5,609.1	5,894.6	6,074.7	6,440.5	6,934.4	Private sector
-1,297.6	-1,585.8	-1,498.8	-1,613.8	-1,720.1	-1,576.3	-1,761.2	-1,817.0	-1,913.4	-1,967.8	-2,007.7	-1,813.7	-1,927.7	-1,907.1	-1,983.4	-2,023.9	-2,033.9	-1,999.5	-2,042.2	-2,067.4	Other items (net)
5,948.8	5,901.9	5,960.9	6,195.8	6,325.5	6,658.7	6,439.2	6,266.5	6,341.4	6,631.6	6,685.0	6,983.4	7,153.5	7,151.6	7,528.9	7,710.5	7,700.9	7,446.8	7,445.1	7,531.2	Broad money
2,612.6	2,642.9	2,774.7	2,868.6	2,948.1	3,117.9	3,003.0	3,027.1	2,998.3	2,960.0	3,033.3	3,100.7	3,236.2	3,321.5	3,476.0	3,504.0	3,656.3	3,601.7	3,607.2	3,655.9	Narrow money
785.2	810.8	809.1	816.2	826.1	824.6	843.3	869.7	870.7	845.3	883.2	860.2	883.1	910.3	942.7	951.3	973.4	952.6	993.1	1,000.3	Currency in circulation
23.4	25.8	43.4	27.3	34.9	48.7	51.4	21.8	22.3	17.7	44.3	25.7	32.2	38.7	38.2	51.2	62.8	32.1	44.5	42.2	Public ent. deposits (Rf) ^{3/}
1,804.0	1,806.3	1,922.3	2,025.1	2,087.1	2,244.6	2,108.4	2,135.6	2,105.3	2,097.0	2,105.8	2,214.8	2,320.9	2,372.5	2,495.1	2,501.5	2,620.2	2,617.0	2,569.7	2,613.4	Demand deposits
3,336.1	3,259.0	3,186.1	3,327.2	3,377.4	3,540.8	3,436.2	3,239.4	3,343.1	3,671.6	3,651.7	3,882.7	3,917.3	3,830.1	4,052.9	4,206.5	4,044.6	3,845.2	3,837.9	3,875.4	Quasi money
(Twelve month percentage change)																				
-9.9	-8.8	-24.7	-25.0	-15.4	-7.3	-25.4	-33.6	-40.9	-37.9	-46.7	-36.9	-27.4	-31.0	-6.2	7.8	-14.8	-20.6	-17.4	-10.8	Net foreign assets
21.7	22.3	10.7	13.0	15.3	15.5	14.5	5.4	0.3	-2.8	-11.6	-8.6	-7.1	-10.5	6.1	8.4	-3.8	2.8	7.3	20.6	Monetary Authorities (net)
-101.3	-92.7	-114.3	-115.1	-96.9	-90.9	-166.0	-222.8	-220.4	-177.5	-168.6	-236.2	5445.6	-958.0	234.9	18.4	-1089.3	-1108.4	134.2	120.2	Commercial banks (net)
37.8	36.1	52.0	56.7	49.5	51.2	60.7	59.0	61.1	61.5	62.9	60.7	56.1	52.2	43.9	32.6	39.8	33.0	28.2	27.9	Domestic credit
-18.7	-11.0	38.2	33.0	38.9	70.9	100.0	100.6	99.0	77.5	104.9	81.6	73.3	58.3	20.6	25.0	37.2	2.0	-7.2	-28.8	Public sector
-36.9	-26.3	9.1	10.0	16.5	50.0	64.6	84.0	93.4	79.7	108.9	94.5	89.0	53.7	32.6	36.7	53.3	-1.8	-13.0	-41.2	Central govt. (net)
63.2	55.2	56.5	64.7	52.5	46.8	52.4	50.2	53.4	58.1	54.6	56.6	52.2	50.8	50.7	34.7	40.5	41.1	37.9	43.8	Private sector
22.9	18.4	17.5	19.1	18.8	27.9	21.5	18.4	14.4	15.0	11.7	20.2	20.3	21.2	26.3	24.4	21.7	11.8	15.6	20.2	Broad money
26.5	26.1	27.7	29.7	27.4	40.0	33.8	34.9	27.7	23.3	22.5	22.8	23.9	25.7	25.3	22.2	24.0	15.5	20.1	20.8	Narrow money
26.4	26.3	22.8	25.8	22.7	19.6	20.3	20.6	16.8	12.7	15.8	8.7	12.5	12.3	16.5	16.5	17.8	15.5	17.8	15.0	Currency in circulation
Memorandum items:																				
3,155.5	3,084.6	3,011.9	3,147.5	3,197.1	3,344.0	3,254.8	3,076.0	3,181.7	3,471.4	3,441.2	3,670.0	3,703.3	3,614.4	3,834.9	3,979.5	3,717.0	3,646.9	3,631.1	3,649.0	Foreign currency deposits
53.0	52.3	50.5	50.8	50.5	50.2	50.5	49.1	50.2	52.3	51.5	52.6	51.8	50.5	50.9	51.6	48.3	49.0	48.8	48.5	Dollarization ratio ^{4/}

Table 9. Assets and Liabilities of the Maldives Monetary Authority, 1997 - 2006*(In millions of rufiyaa; end of period)*

	1997	1998	1999	2000	2001	2002	2003	2004	2005
Total assets	2,182.3	2,527.0	2,781.8	2,981.3	2,877.0	3,487.4	3,609.0	3,940.8	4,222.4
Foreign assets ^{1/}	1,166.9	1,405.0	1,505.8	1,455.3	1,201.0	1,714.3	2,051.4	2,616.1	2,394.9
Claims on government	920.1	1,024.4	1,156.1	1,409.0	1,584.5	1,704.3	1,517.2	1,291.4	1,617.7
Claims on PNFE	-0.2	3.2	2.5	1.6	1.5	1.5	1.5	1.5	0.0
Claims on commercial banks	1.4	1.4	1.4	0.0	0.0	0.0	0.0	0.0	0.0
Other assets ^{2/}	94.1	93.1	116.0	115.4	90.0	67.4	38.9	31.8	209.8
Total liabilities	2,182.3	2,527.0	2,781.8	2,981.3	2,877.0	3,487.4	3,609.0	3,940.8	4,222.4
Reserve money ^{3/}	1,376.5	1,512.0	1,620.1	1,703.2	1,840.0	2,193.6	2,145.4	2,743.3	2,882.9
Currency outside banks	489.7	524.9	593.3	618.1	566.5	569.9	624.9	762.5	883.2
Currency with commercial banks	21.6	18.4	42.8	38.9	43.3	54.5	52.2	65.5	63.9
Public ent. deposits (Rf) ^{3/}	92.0	125.8	51.2	74.9	45.9	48.4	55.4	99.3	68.5
Local currency ^{3/}	59.3	105.1	24.7	37.6	35.8	33.5	45.4	51.9	44.3
Foreign currency	32.7	20.7	26.5	37.4	10.2	14.9	10.0	47.4	24.2
Banks' deposits	773.2	842.9	932.8	971.2	1,184.2	1,520.9	1,412.9	1,816.0	1,867.3
Foreign liabilities	10.1	10.1	10.1	10.2	10.2	10.2	10.2	11.0	91.4
Government deposits ^{4/}	190.3	254.0	266.2	262.1	315.3	341.0	375.0	431.6	174.4
Capital accounts	130.4	105.4	118.3	179.3	185.6	89.1	183.5	194.2	349.4
MMA certificates of deposit	330.0	480.0	569.0	666.9	323.0	554.4	684.1	376.4	313.5
Other liabilities	145.0	165.6	198.1	159.6	203.0	299.2	210.9	184.3	410.8
(Twelve month percentage change)									
Reserve money	15.8	9.8	7.2	5.1	8.0	19.2	-2.2	27.9	5.1
Currency outside banks	15.0	7.2	13.0	4.2	-8.3	0.6	9.7	22.0	15.8
Banks' deposits	15.6	9.0	10.7	4.1	21.9	28.4	-7.1	28.5	2.8
Government deposits	9.1	33.5	4.8	-1.5	20.3	8.1	10.0	15.1	-59.6
MMA certificates of deposits	65.8	45.5	18.5	17.2	-51.6	71.6	23.4	-45.0	-16.7
Memorandum items:									
Foreign assets of MMA, gross (U.S. dollar millions)	99.1	119.4	127.9	123.6	93.8	133.9	160.3	204.4	187.1
Foreign assets of MMA, net (U.S. dollar millions)	98.3	118.5	127.1	122.8	93.0	133.1	159.5	203.5	180.0
Exchange rate (Rufiyaa per U.S. dollar)	11.8	11.8	11.8	11.8	12.8	12.8	12.8	12.8	12.8

1/ Series has been revised on 23rd Jan 2006 - to exclude gold and silver coin.

2/ An MMA claim on Govt. (which is written off when compiling the monetary survey) has been taken from other Assets included in other Liabilities. Series has been revised on 23rd Jan 2006 - to include gold and silver coin.

3/ Series has been revised on 23rd Jan 2006 - to exclude deposits of atolls

4/ Series has been revised on 23rd Jan 2006 - to include deposits of atolls

Source: Maldives Monetary Authority.

Last update: 29th October, 2006

2005												2006									
Feb-05	Mar-05	Apr-05	May-05	Jun-05	Jul-05	Aug-05	Sep-05	Oct-05	Nov-05	Dec-05	Jan-06	Feb-06	Mar-06	Apr-06	May-06	Jun-06	Jul-06	Aug-06	Sep-06		
4,162.8	4,485.2	4,456.5	4,609.0	4,793.8	4,715.4	4,686.8	4,477.4	4,503.4	4,580.9	4,222.4	4,645.4	4,879.4	4,889.1	5,202.8	5,381.4	5,329.8	5,604.7	5,267.8	5,329.2	Total assets	
2,691.0	2,837.7	2,664.8	2,757.8	2,839.8	2,836.5	2,779.7	2,597.7	2,540.5	2,563.8	2,394.9	2,576.2	2,582.1	2,550.3	2,822.7	2,982.0	2,734.4	2,912.4	2,977.2	3,115.2	Foreign assets ^{1/}	
1,445.4	1,548.4	1,692.4	1,748.6	1,846.2	1,626.8	1,796.8	1,766.3	1,848.2	1,895.3	1,617.7	1,841.9	2,071.1	2,113.4	2,161.8	2,179.6	2,377.1	2,464.0	2,064.7	1,987.1	Claims on government	
1.5	1.5	1.5	1.5	1.5	1.5	1.5	1.5	1.5	1.5	0.0	0.0	8.2	0.0	0.0	0.0	0.0	0.0	0.0	0.0	Claims on PNFE	
0.0	0.0	0.0	0.0	0.0	0.0	0.0	0.0	0.0	0.0	0.0	0.0	0.0	0.0	0.0	0.0	0.0	0.0	0.0	0.0	Claims on commercial banks	
25.0	97.6	97.9	101.1	106.3	250.6	108.9	112.0	113.2	120.3	209.8	227.3	218.0	225.4	218.3	219.8	218.2	228.2	225.9	226.9	Other assets ^{2/}	
4,162.8	4,485.2	4,456.5	4,609.0	4,793.8	4,715.4	4,686.8	4,477.4	4,503.4	4,580.9	4,222.4	4,645.4	4,879.4	4,889.1	5,202.8	5,381.4	5,329.8	5,604.7	5,267.8	5,329.2	Total liabilities	
2,821.5	2,957.6	2,795.6	2,808.9	2,789.5	3,115.9	2,940.0	2,868.2	2,898.9	2,936.8	2,882.9	3,192.4	3,213.6	3,195.4	3,416.9	3,564.6	3,230.4	3,074.2	3,118.6	3,165.1	Reserve money ^{3/}	
785.2	810.8	809.1	816.2	826.1	824.6	843.3	869.7	870.7	845.3	883.2	860.2	883.1	910.3	942.7	951.3	973.4	952.6	993.1	1,000.3	Currency outside banks	
71.9	53.9	62.8	63.7	70.5	101.4	64.6	58.3	72.5	82.1	63.9	77.5	78.9	65.6	77.2	72.5	75.8	101.3	71.7	94.1	Currency with commercial banks	
67.1	74.0	68.0	56.9	56.9	72.8	82.2	38.0	43.3	38.6	68.5	59.0	70.6	79.1	65.3	81.9	94.3	68.7	68.2	67.0	Public ent. deposits (Rf) ^{3/}	
23.4	25.8	43.4	27.3	34.9	48.7	51.4	21.8	22.3	17.7	44.3	25.7	32.2	38.7	38.2	51.2	62.8	32.1	44.5	42.2	Local currency ^{3/}	
43.7	48.2	24.7	29.6	22.0	24.1	30.9	16.2	21.0	20.9	24.2	33.3	38.4	40.3	27.2	30.7	31.5	36.7	23.8	24.9	Foreign currency	
1,897.4	2,018.9	1,855.7	1,872.0	1,836.0	2,117.1	1,949.9	1,902.2	1,912.4	1,970.8	1,867.3	2,195.7	2,181.0	2,140.4	2,331.7	2,459.0	2,087.0	1,951.6	1,985.6	2,003.6	Banks' deposits	
11.1	90.7	91.4	91.4	91.4	91.4	91.4	91.4	91.4	91.4	91.4	91.4	91.4	91.4	91.4	91.4	91.4	91.4	91.4	91.4	Foreign liabilities	
338.6	336.5	368.1	373.2	559.3	310.3	457.9	329.3	390.0	495.3	174.4	354.0	392.3	509.7	525.6	376.0	544.6	958.3	625.0	733.4	Government deposits ^{4/}	
161.7	168.5	175.5	178.0	186.9	196.7	204.7	214.4	239.9	253.9	349.4	173.4	187.9	201.4	217.7	236.8	254.1	271.0	289.7	306.6	Capital accounts	
628.2	651.3	761.4	822.6	734.8	561.3	574.5	555.6	463.0	407.2	313.5	315.5	484.3	517.4	577.5	750.7	852.9	843.0	773.8	671.9	MMA certificates of deposit	
201.7	280.6	264.4	334.8	431.9	439.7	418.3	418.5	420.0	396.3	410.8	518.6	509.8	373.7	373.5	361.9	356.3	366.8	369.2	360.7	Other liabilities	
(Twelve month percentage change)																					
27.0	29.9	13.6	13.7	10.8	24.8	21.8	18.9	9.4	8.2	5.1	13.5	13.9	8.0	22.2	26.9	15.8	-1.3	6.1	10.4	Reserve money	
26.4	26.3	22.8	25.8	22.7	19.6	20.3	20.6	16.8	12.7	15.8	8.7	12.5	12.3	16.5	16.5	17.8	15.5	17.8	15.0	Currency outside banks	
25.3	31.5	8.9	9.7	6.7	26.1	22.5	20.0	8.0	7.5	2.8	16.6	14.9	6.0	25.6	31.4	13.7	-7.8	1.8	5.3	Banks' deposits	
-2.7	-4.4	-9.0	-13.7	6.8	-50.8	-31.7	-52.4	1.6	24.4	-59.6	-4.6	15.9	51.5	42.8	0.7	-2.6	208.9	36.5	122.7	Government deposits	
-28.2	-22.3	9.7	18.1	5.2	16.0	18.3	14.1	23.9	8.6	-16.7	-36.9	-22.9	-20.6	-24.2	-8.7	16.1	50.2	34.7	20.9	MMA certificates of deposits	
Memorandum items:																					
210.2	221.7	208.2	215.5	221.9	221.6	217.2	202.9	198.5	200.3	187.1	201.3	201.7	199.2	220.5	233.0	213.6	227.5	232.6	243.4	Foreign assets of MMA, gross (U.S. dollar millions)	
209.4	214.6	201.0	208.3	214.7	214.5	210.0	195.8	191.3	193.2	180.0	194.1	194.6	192.1	213.4	225.8	206.5	220.4	225.5	236.2	Foreign assets of MMA, net (U.S. dollar millions)	
12.8	12.8	12.8	12.8	12.8	12.8	12.8	12.8	12.8	12.8	12.8	12.8	12.8	12.8	12.8	12.8	12.8	12.8	12.8	12.8	Exchange rate (Rufiyaa per U.S. dollar)	

Table 10. Assets and Liabilities of the Commercial Banks, 1997 - 2006*(In millions of rufiyaa; end of period)*

	1997	1998	1999	2000	2001	2002	2003	2004	2005
Total assets	2,512.9	3,183.4	3,405.7	3,687.5	4,051.7	4,965.9	5,359.2	7,129.3	9,045.5
Reserves	1,174.0	1,346.5	1,553.5	1,695.2	1,563.4	2,094.3	2,062.0	2,086.7	2,179.8
Cash	21.6	18.4	42.8	38.9	43.3	54.5	52.2	65.5	63.9
Balance with MMA ^{1/}	750.7	785.4	874.8	919.5	1,127.7	1,451.6	1,394.4	1,751.2	1,802.1
Investment in securities	401.7	542.8	635.9	736.8	392.4	588.3	615.4	269.9	313.7
Foreign assets	135.3	278.4	224.7	257.5	318.5	411.2	775.7	1,010.6	603.3
Claims on public sector	103.8	161.9	193.8	183.2	182.6	209.5	114.5	261.8	490.7
Government	0.0	0.0	0.0	0.0	0.0	0.0	25.6	21.3	12.8
Public enterprises	103.8	161.9	193.8	183.2	182.6	209.5	88.9	240.5	477.9
Claims on private sector	996.8	1,253.2	1,302.8	1,407.1	1,827.2	2,100.8	2,244.4	3,541.3	5,474.1
Unclassified assets	103.1	143.4	131.0	144.5	160.0	150.0	162.6	228.9	297.7
Total liabilities	2,512.9	3,183.4	3,405.7	3,687.5	4,051.7	4,965.9	5,359.2	7,129.3	9,045.5
Demand deposits	1,202.6	1,465.5	1,580.1	1,701.2	1,925.5	2,343.3	2,893.7	3,947.1	4,694.0
Local currency	619.2	725.4	935.9	1,074.4	1,022.1	1,253.0	1,398.8	1,662.5	2,105.8
Foreign currency	583.4	740.0	644.2	626.7	903.3	1,090.4	1,494.9	2,284.6	2,588.2
Time and savings deposits	491.9	683.7	673.9	625.3	755.3	974.5	933.5	1,174.8	1,039.3
Local currency	86.4	142.3	133.0	202.4	184.1	208.9	118.1	162.5	210.5
Foreign currency	405.6	541.4	540.9	422.9	571.2	765.6	815.4	1,012.3	828.8
Foreign liabilities	150.2	189.3	321.4	395.7	362.4	460.0	212.6	258.6	1,119.1
Banks abroad	136.6	169.6	312.7	377.9	339.9	442.3	134.1	123.0	957.7
Nonresident's deposits	13.6	19.8	8.7	17.8	22.5	17.8	78.4	135.6	161.3
Government deposits	93.5	126.1	161.0	182.2	222.1	259.8	292.3	424.9	503.2
Capital account	358.9	487.0	496.2	610.9	572.1	646.5	685.6	875.5	1,098.5
Credit from MMA	0.9	0.9	0.1	0.0	0.0	0.0	0.0	0.0	0.0
Other liabilities	215.0	231.0	173.0	172.3	214.4	281.7	341.6	448.5	591.5
Memorandum items:									
Total deposits	1,801.6	2,295.0	2,423.7	2,526.4	2,925.3	3,595.4	4,197.9	5,682.4	6,397.7
Local currency	801.3	984.5	1,212.2	1,440.5	1,405.6	1,697.3	1,771.1	2,163.1	2,687.7
Foreign currency	1,000.3	1,310.5	1,211.5	1,085.9	1,519.8	1,898.1	2,426.8	3,519.3	3,710.1

1/ This includes required reserves and excess reserves held in MMA
note: August 2006 revised on October 2006

Source: Maldives Monetary Authority

2005											2006									
Feb-05	Mar-05	Apr-05	May-05	Jun-05	Jul-05	Aug-05	Sep-05	Oct-05	Nov-05	Dec-05	Jan-06	Feb-06	Mar-06	Apr-06	May-06	Jun-06	Jul-06	Aug-06	Sep-06	
7,754.8	7,471.1	7,886.0	8,082.4	8,057.6	8,469.5	8,606.0	8,563.2	8,918.6	8,999.6	9,045.5	9,617.0	9,792.2	9,815.5	10,264.0	10,415.0	10,614.7	10,791.8	10,900.8	11,407.9	Total assets
2,627.9	2,509.6	2,487.9	2,662.2	2,559.9	2,678.2	2,477.3	2,421.1	2,359.5	2,320.1	2,179.8	2,528.0	2,684.9	2,652.3	2,862.9	3,253.1	3,037.6	2,889.1	2,843.4	2,788.4	Reserves
71.9	53.9	62.8	63.7	70.5	101.4	64.6	58.3	72.5	82.1	63.9	77.5	78.9	65.6	77.2	72.5	75.8	101.3	71.7	94.1	Cash
2,119.0	1,955.1	1,793.6	1,907.2	1,776.1	2,048.0	1,885.2	1,877.7	1,899.6	1,887.5	1,802.1	2,134.0	2,126.0	2,098.4	2,254.5	2,434.0	2,020.8	1,887.5	1,923.2	1,937.5	Balance with MMA ^{1/}
437.0	500.6	631.5	691.3	713.3	528.8	527.6	485.1	387.4	350.5	313.7	316.5	480.0	488.3	531.2	746.7	941.0	900.2	848.5	756.7	Investment in securities
770.4	589.3	797.0	670.7	629.2	762.0	600.3	517.9	667.7	591.7	603.3	659.6	612.5	630.1	756.1	894.5	950.5	930.4	695.3	770.3	Foreign assets
314.9	277.8	402.4	335.3	355.5	388.8	482.0	484.4	443.7	408.2	490.7	416.0	431.1	449.7	384.6	311.5	361.1	417.0	488.9	452.6	Claims on public sector
21.3	21.3	21.3	21.3	17.1	17.1	17.1	17.1	17.1	17.1	12.8	12.8	12.8	12.8	12.8	12.8	12.8	8.5	8.5	8.5	Government
293.5	256.5	381.0	314.0	338.4	371.7	464.9	467.3	426.7	391.1	477.9	403.2	418.3	436.9	371.8	298.7	348.3	408.5	480.4	444.1	Public enterprises
3,739.9	3,795.9	3,889.9	4,163.0	4,195.1	4,306.7	4,669.9	4,821.8	5,127.4	5,342.7	5,474.1	5,582.3	5,692.8	5,722.8	5,861.2	5,609.1	5,894.6	6,074.7	6,440.5	6,934.4	Claims on private sector
301.8	298.6	308.8	251.0	317.9	333.9	376.4	318.0	320.3	337.0	297.7	431.0	370.9	360.5	399.2	346.8	371.0	480.6	432.7	462.3	Unclassified assets
7,754.8	7,471.1	7,886.0	8,082.4	8,057.6	8,469.5	8,606.0	8,563.2	8,918.6	8,999.6	9,045.5	9,617.0	9,792.2	9,815.5	10,264.0	10,415.0	10,614.7	10,791.8	10,900.8	11,407.9	Total liabilities
4,001.8	3,928.3	3,997.9	4,088.6	4,190.2	4,486.3	4,382.8	4,293.0	4,363.4	4,655.1	4,694.0	4,946.6	5,036.4	4,975.7	5,298.7	5,355.3	5,320.6	5,255.9	5,076.6	5,159.3	Demand deposits
1,804.0	1,806.3	1,922.3	2,025.1	2,087.1	2,244.6	2,108.4	2,135.6	2,105.3	2,097.0	2,105.8	2,214.8	2,320.9	2,372.5	2,495.1	2,501.5	2,620.2	2,617.0	2,569.7	2,613.4	Local currency
2,197.8	2,122.0	2,075.6	2,063.6	2,103.0	2,241.6	2,274.4	2,157.4	2,258.1	2,558.1	2,588.2	2,731.8	2,715.5	2,603.2	2,803.6	2,853.8	2,700.4	2,638.9	2,506.9	2,545.9	Foreign currency
1,094.7	1,088.8	1,085.9	1,234.0	1,252.4	1,275.0	1,130.9	1,065.8	1,064.0	1,092.7	1,039.3	1,117.7	1,163.4	1,186.6	1,222.1	1,322.1	1,312.7	1,169.6	1,307.2	1,304.6	Time and savings deposits
180.6	174.4	174.2	179.7	180.4	196.7	181.4	163.4	161.5	200.3	210.5	212.8	214.0	215.7	218.0	227.0	327.7	198.3	206.8	226.4	Local currency
914.1	914.4	911.7	1,054.3	1,072.0	1,078.3	949.5	902.4	902.5	892.4	828.8	904.9	949.4	970.9	1,004.1	1,095.1	985.0	971.3	1,100.4	1,078.2	Foreign currency
780.3	528.4	928.5	821.4	601.2	703.0	1,039.5	1,120.1	1,341.9	1,086.6	1,119.1	1,185.0	1,164.9	1,152.4	1,196.6	1,073.0	1,226.9	1,525.8	1,723.9	2,096.5	Foreign liabilities
648.9	386.1	786.8	688.0	468.2	562.1	894.8	972.1	1,163.2	935.6	957.7	1,018.9	990.6	978.2	1,028.1	887.2	1,063.3	1,344.8	1,544.6	1,918.8	Banks abroad
131.4	142.3	141.7	133.4	133.0	140.9	144.7	148.0	178.7	151.0	161.3	166.1	174.3	174.2	168.5	185.7	163.7	181.0	179.4	177.7	Nonresident's deposits
586.6	607.2	600.1	581.4	569.7	582.6	540.9	565.1	550.8	530.5	503.2	648.4	668.0	654.1	660.5	702.0	720.0	776.7	738.9	739.5	Government deposits
842.4	837.8	871.9	874.3	904.6	918.6	986.5	1,038.6	1,074.6	1,124.2	1,098.5	1,143.9	1,188.5	1,230.1	1,222.1	1,270.5	1,371.2	1,450.2	1,493.8	1,545.5	Capital accounts
0.0	0.0	0.0	0.0	0.0	0.0	0.0	0.0	0.0	0.0	0.0	0.0	0.0	0.0	0.0	0.0	0.0	0.0	0.0	0.0	Credit from MMA
449.0	480.7	401.6	482.7	539.6	504.1	525.3	480.5	523.8	510.6	591.5	575.4	571.2	616.7	664.0	692.3	663.4	613.6	560.3	562.5	Other liabilities
Memorandum items:																				
5,814.5	5,766.5	5,825.6	6,037.4	6,145.3	6,484.7	6,199.3	6,071.9	6,156.9	6,429.3	6,397.7	6,878.7	7,042.0	6,990.5	7,349.8	7,565.0	7,516.9	7,383.2	7,302.1	7,381.1	Total deposits
2,426.4	2,451.7	2,563.8	2,645.3	2,701.3	2,922.3	2,735.2	2,747.7	2,696.3	2,700.2	2,687.7	2,941.6	3,051.6	3,091.2	3,211.0	3,262.6	3,496.5	3,392.6	3,328.2	3,404.2	Local currency
3,388.1	3,314.8	3,261.9	3,392.1	3,444.0	3,562.5	3,464.2	3,324.2	3,460.6	3,729.1	3,710.1	3,937.2	3,990.4	3,899.3	4,138.8	4,302.5	4,020.4	3,990.6	3,973.9	3,977.0	Foreign currency

Table 11. Commercial Banks Loans and Advances by Economic Sectors, 1997 - 2006^{1/}*(In millions of rufiyaa; end of period)*

	1997	1998	1999	2000	2001	2002	2003	2004	2005
Total	993.2	1,256.6	1,294.7	1,391.3	1,811.5	2,085.0	2,228.7	3,525.6	5,458.4
Fishing	47.0	58.5	69.2	68.7	75.7	115.3	150.8	222.3	354.6
Tourism	406.7	609.5	714.4	742.5	824.0	1,160.0	1,248.4	2,053.0	3,048.1
Hotels and restaurant	24.9	28.5	21.5	21.0	25.8	88.1	140.9	230.8	324.1
Development of tourism	381.8	580.9	692.9	721.5	798.1	1,071.9	1,107.5	1,822.2	2,724.0
Agriculture	4.1	4.8	4.5	3.8	7.3	10.5	10.5	11.6	14.0
Construction	59.2	74.1	71.2	115.4	135.0	136.1	169.1	238.6	295.8
Housing	56.0	71.9	69.5	113.8	133.1	117.8	143.4	215.6	260.1
Others	3.2	2.2	1.7	1.6	1.9	18.3	25.6	23.0	35.7
Manufacturing	24.5	26.1	24.6	17.6	30.0	14.6	39.9	48.2	87.4
Commerce ^{2/}	411.9	406.2	371.1	392.0	659.2	529.4	489.2	730.9	1,007.3
Electricity, gas water and sanitary services	5.1	40.5	1.9	1.1	3.5	0.7	2.5	2.5	1.9
Transport, storage and communication	18.3	17.0	24.1	24.0	31.2	37.0	31.1	88.9	234.6
Services	14.5	11.9	11.1	22.9	45.3	48.9	63.1	78.1	152.0
Professional and community	10.7	8.2	7.6	12.8	36.4	35.6	41.3	55.0	65.5
Personal non-business, loans to individual	3.8	3.7	3.5	10.1	8.8	13.3	21.8	23.2	86.5
Employees, and activities not adequately described	1.8	8.0	2.5	3.4	0.3	32.6	24.0	51.4	262.7
<i>(In percent of total; end of period)</i>									
Fishing	4.7	4.7	5.3	4.9	4.2	5.5	6.8	6.3	6.5
Tourism	40.9	48.5	55.2	53.4	45.5	55.6	56.0	58.2	55.8
Construction	6.0	5.9	5.5	8.3	7.5	6.5	7.6	6.8	5.4
Commerce	41.5	32.3	28.7	28.2	36.4	25.4	21.9	20.7	18.5
<i>(Twelve month percentage change)</i>									
Total	43.7	26.5	3.0	7.5	30.2	15.1	6.9	58.2	54.8
Fishing	9.6	24.3	18.3	-0.7	10.2	52.2	30.9	47.4	59.5
Tourism	71.8	49.8	17.2	3.9	11.0	40.8	7.6	64.5	48.5
Construction	20.2	25.1	-3.8	61.9	17.0	0.8	24.3	41.1	24.0
Commerce	31.0	-1.4	-8.6	5.6	68.2	-19.7	-7.6	49.4	37.8

1/ Includes total loans and advances to private sector excluding private sector bills purchased and discounted.

2/ Includes wholesale and retail trade, import and export trade.

Source: Maldives Monetary Authority.

2005												2006								
Feb-05	Mar-05	Apr-05	May-05	Jun-05	Jul-05	Aug-05	Sep-05	Oct-05	Nov-05	Dec-05	Jan-06	Feb-06	Mar-06	Apr-06	May-06	Jun-06	Jul-06	Aug-06	Sep-06	
3,724.2	3,780.2	3,874.1	4,147.3	4,179.4	4,291.0	4,656.5	4,806.1	5,109.1	5,327.0	5,458.4	5,566.7	5,677.1	5,720.1	5,858.6	5,608.7	5,894.2	6,074.3	6,430.6	6,934.0	Total
239.7	238.8	242.1	238.2	244.0	247.7	257.4	306.9	341.0	355.8	354.6	373.8	378.3	396.1	430.0	432.6	470.5	456.2	563.0	578.1	Fishing
2,149.8	2,210.2	2,229.1	2,373.8	2,348.1	2,391.9	2,631.3	2,663.5	2,837.9	2,920.8	3,048.1	3,103.7	3,171.0	3,223.6	3,277.6	3,105.2	3,224.6	3,306.1	3,484.2	3,744.0	Tourism
259.2	309.8	325.2	335.9	339.0	319.9	307.5	316.9	351.9	291.9	324.1	334.0	336.2	342.7	395.1	325.3	373.4	381.1	465.0	425.1	Hotels and restaurant
1,890.5	1,900.4	1,903.9	2,037.9	2,009.1	2,072.1	2,323.8	2,346.7	2,486.0	2,628.9	2,724.0	2,769.7	2,834.8	2,880.9	2,882.5	2,779.9	2,851.2	2,925.0	3,019.2	3,318.8	Development of tourism
12.1	12.4	12.7	12.1	13.0	13.2	13.4	14.0	13.7	13.8	14.0	14.2	14.0	14.3	13.1	14.4	14.4	14.9	16.1	16.8	Agriculture
245.0	245.9	251.4	255.7	263.4	278.2	288.7	289.4	283.3	285.8	295.8	301.1	306.0	313.7	328.1	344.7	369.6	381.9	394.2	419.6	Construction
221.7	223.3	229.8	232.5	239.4	242.8	254.4	262.3	248.0	256.3	260.1	260.2	263.0	273.7	283.2	298.3	320.7	341.7	347.6	366.7	Housing
23.3	22.5	21.5	23.2	24.0	35.3	34.3	27.1	35.3	29.5	35.7	40.9	43.0	40.0	44.9	46.4	48.9	40.2	46.6	52.9	Others
54.9	69.7	77.8	79.5	83.0	83.8	73.7	77.8	85.0	86.1	87.4	95.0	101.7	113.4	113.5	103.9	116.6	122.2	128.5	139.0	Manufacturing
771.4	747.0	777.4	839.1	837.7	851.8	899.9	912.7	972.1	1,022.6	1,007.3	1,018.7	1,018.9	972.8	1,019.9	918.8	1,001.1	1,059.8	1,112.9	1,252.9	Commerce ^{2/}
2.5	2.4	2.3	2.4	2.2	3.3	3.2	2.5	2.2	1.9	1.9	4.7	4.6	1.7	4.0	2.5	1.6	2.0	4.8	4.2	Electricity, gas water and sanitary services
107.1	105.2	109.7	131.0	134.0	144.3	192.4	206.0	216.1	222.2	234.6	258.8	258.6	257.9	257.3	261.3	261.9	267.4	269.1	313.9	Transport, storage and communication
80.0	79.9	82.6	81.5	84.8	88.1	93.5	99.1	106.4	140.7	152.0	147.4	173.1	158.5	160.4	168.0	173.7	183.3	172.5	185.9	Services
55.2	55.9	56.8	56.7	58.4	60.8	63.7	65.4	65.6	65.5	65.5	66.3	83.0	69.0	69.5	73.7	77.9	79.3	73.2	79.6	Professional and community
24.8	23.9	25.8	24.7	26.3	27.4	29.8	33.7	40.8	75.2	86.5	81.1	90.1	89.5	90.9	94.3	95.8	103.9	99.3	106.3	Personal non-business, loans to individual
61.6	68.7	89.2	134.0	169.2	188.6	202.9	234.1	251.4	277.3	262.7	249.2	250.9	268.2	254.6	257.4	260.3	280.5	285.3	279.6	Employees, and activities not adequately described

(In percent of total; end of period)

6.4	6.3	6.2	5.7	5.8	5.8	5.5	6.4	6.7	6.7	6.5	6.7	6.7	6.9	7.3	7.7	8.0	7.5	8.8	8.3	Fishing
57.7	58.5	57.5	57.2	56.2	55.7	56.5	55.4	55.5	54.8	55.8	55.8	55.9	56.4	55.9	55.4	54.7	54.4	54.2	54.0	Tourism
6.6	6.5	6.5	6.2	6.3	6.5	6.2	6.0	5.5	5.4	5.4	5.4	5.4	5.5	5.6	6.1	6.3	6.3	6.1	6.1	Construction
20.7	19.8	20.1	20.2	20.0	19.9	19.3	19.0	19.0	19.2	18.5	18.3	17.9	17.0	17.4	16.4	17.0	17.4	17.3	18.1	Commerce

(Twelve month percentage change)

63.7	55.6	56.8	65.1	52.8	47.0	52.8	50.4	53.6	58.4	54.8	56.9	52.4	51.3	51.2	35.2	41.0	41.6	38.1	44.3	Total
43.5	30.7	27.0	24.9	25.8	26.4	25.1	44.8	58.8	66.1	59.5	56.4	57.8	65.8	77.6	81.6	92.8	84.1	118.7	88.3	Fishing
68.6	55.3	55.8	63.7	48.3	39.9	47.8	42.8	45.4	49.7	48.5	51.6	47.5	45.9	47.0	30.8	37.3	38.2	32.4	40.6	Tourism
40.2	40.3	44.1	31.8	29.4	28.6	36.7	31.6	26.6	20.3	24.0	23.2	24.9	27.6	30.5	34.8	40.3	37.3	36.5	45.0	Construction
60.1	63.1	62.5	76.2	60.4	52.4	49.1	41.7	42.7	46.3	37.8	38.6	32.1	30.2	31.2	9.5	19.5	24.4	23.7	37.3	Commerce

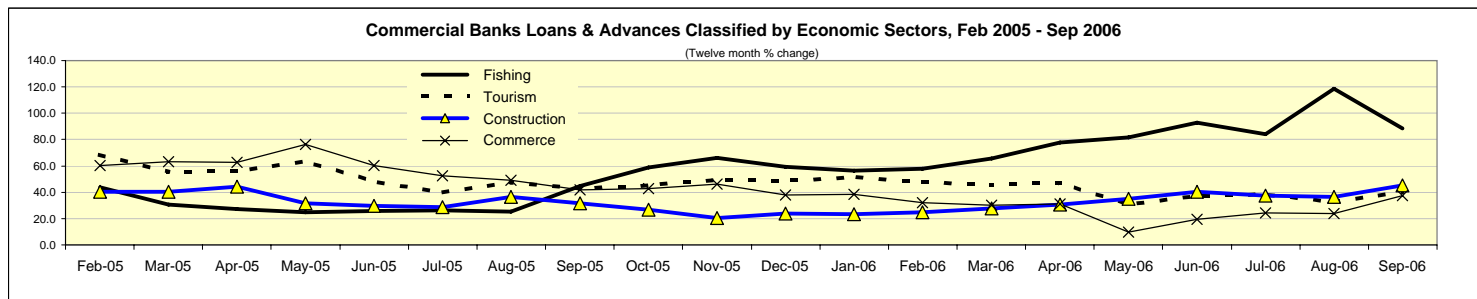


Table 12. Interest Rates, 1997 - 2006*(In percent per annum)*

	1997	1998	1999	2000	2001	2002	2003	2004	2005
MALDIVES MONETARY AUTHORITY									
Lombard rate (end of period) ^{1/}	18.0	18.0	18.0	18.0	18.0	19.0	19.0	18.0	18.0
Certificates of Deposit (end of period) ^{2/}	8.0	8.0	8.0	8.0	8.0	8.0	6.0	4.0	4.0
COMMERCIAL BANKS									
Deposits (Rf and US\$)									
Special notice deposits ^{3/}	5.0	5.0	5.0	5.0	5.0	5.0	5.0	2.5-3.0	2.5-3.0
Savings deposits	5.0-6.0	5.0-6.0	5.0-6.0	5.0-6.0	5.0-6.0	2.5-5.5	2.0-5.00	1.5-3.0	1.5-3.0
Time deposits									
Up to 6 months	5.0-6.5	5.0-6.5	5.0-6.75	5.0-6.75	5.0-6.75	2.5-7.5	2.0-7.5	1.5-6.5	1.5-6.5
Over 6 months to 1 year	5.0-7.0	5.0-7.0	5.5-6.875	5.5-6.875	5.5-7.5	3.5-7.5	3.0-7.5	2.5-6.5	2.5-6.5
Over 1 year to 3 years	5.0-7.5	5.0-7.5	5.5-7.5	5.5-7.5	5.5-7.5	5.5-7.5	3.5-7.5	2.875-6.5	2.875-6.5
Over 3 years to 5 years	5.5-7.5	5.5-7.5	5.5-7.5	5.5-7.5	5.5-7.5	5.5-7.5	3.5-7.5	3.0-6.5	3.0-6.5
Over 5 years	5.5-7.0	5.5-8.0	5.5-7.5	5.5-7.5	5.5-7.5	5.5-7.5	3.5-7.5	3.0-6.5	3.0-6.5
Loans									
Private sector									
Domestic currency	12 - 13	12 - 13	12 - 13	12 - 13	12 - 13	9 - 14	9 - 14	8-13	8-13
Foreign currency	14 - 15	14 - 15	14 - 15	12 - 15	12 - 15	8.5 - 15	7.5-14	7.75-13	7.5-13
Public sector	12 - 15	12 - 15	12 - 15	12 - 15	12 - 15	8.5 - 15	7.5 - 14	7.75-13	7.5-13

1/ Five percentage points above the maximum lending rates in the domestic currency.

2/ Includes CDs of different maturity ranging from 1-6 months

3/ Withdrawable at a minimum notice of 30 days.

Source: Maldives Monetary Authority

Table 13. Summary of Balance of Payments, 1997 - 2005
(In millions of U.S. dollars)

	1997	1998	1999	2000	2001	2002	2003 <i>rev. est.</i> <i>15/07/04</i>	2004 <i>rev. est.</i> <i>31/5/2005</i>	2005 <i>rev. est.</i> <i>04/06/06</i>
A. Current Account	-34.7	-21.9	-78.9	-51.5	-58.7	-35.7	-31.8	-133.9	-330.0
Balance on goods	-217.3	-215.9	-262.4	-233.3	-236.0	-212.4	-262.3	-386.4	-493.8
Goods: credit	89.7	95.6	91.5	108.7	110.2	132.3	152.0	181.0	161.6
<i>Domestic exports f.o.b.</i>	72.7	77.1	71.2	80.6	82.1	99.8	118.1	127.9	115.0
Other	16.9	18.5	20.2	28.1	28.1	32.5	33.9	53.1	46.7
Goods: debit	-307.0	-311.5	-353.9	-342.0	-346.3	-344.7	-414.3	-567.3	-655.5
<i>Imports f.o.b.</i>	-307.0	-311.5	-353.9	-342.0	-346.3	-344.7	-414.3	-567.3	-655.5
Balance on services	218.0	232.4	234.6	238.8	244.2	251.7	311.1	349.5	127.0
Services: credit	312.2	331.3	342.8	348.5	354.1	362.9	432.1	507.2	317.2
Travel	286.0	303.0	313.5	320.7	327.1	337.1	401.6	470.9	286.5
Services: debit	-94.2	-98.9	-108.1	-109.7	-109.8	-111.1	-121.0	-157.8	-190.2
Balance on income	-27.4	-28.2	-31.0	-30.0	-37.2	-35.4	-38.4	-42.8	-25.7
Income: credit	7.5	8.6	9.0	10.3	8.2	5.6	6.2	8.3	11.3
Income: debit	-34.9	-36.8	-40.1	-40.3	-45.4	-41.1	-44.6	-51.1	-37.0
Balance on current transfers	-7.9	-10.3	-20.1	-27.0	-29.7	-39.6	-42.3	-54.2	62.6
Current transfers: credit	20.0	20.3	20.4	19.3	19.9	10.6	12.7	6.9	61.4
Current transfers: debit	-27.9	-30.6	-40.5	-46.2	-49.6	-50.2	-54.9	-61.1	1.2
B. Capital Account	0.0	0.0	0.0	0.0	0.0	0.0	0.0	0.0	0.0
C. Financial Account	71.0	60.2	76.2	40.2	35.5	73.5	56.3	152.5	261.0
Direct Investment (net)	11.4	11.5	12.3	13.0	11.7	12.4	13.5	14.7	9.5
Direct investment in Maldives	11.4	11.5	12.3	13.0	11.7	12.4	13.5	14.7	9.5
Other Investment (net)	59.5	48.7	63.9	27.2	23.7	61.1	42.8	137.8	251.5
Other investment assets	53.8	30.8	47.5	22.8	21.3	26.7	28.3	107.0	161.8
Banks	10.8	-12.2	4.6	-2.8	-3.0	-7.2	-28.5	-18.4	31.8
Other sectors	42.9	42.9	42.9	25.6	24.3	33.9	56.8	125.3	130.0
Other investment liabilities	5.8	17.9	16.4	4.4	2.4	34.4	14.4	30.8	89.7
Monetary authorities	-15.3	0.0	0.0	0.0	-0.1	0.0	0.0	0.1	6.3
General government	21.9	14.6	5.2	-1.9	7.8	26.8	33.8	27.2	16.1
o/w Loans	21.9	14.6	5.2	-1.9	7.8	26.8	33.8	27.2	16.1
Disbursements	30.7	25.7	17.6	12.4	23.4	43.5	51.1	47.6	40.1
Amortizations	-8.8	-11.1	-12.5	-14.3	-15.6	-16.7	-17.4	-20.4	-23.9
Banks	-0.8	3.3	11.2	6.3	-5.3	7.6	-19.3	3.6	67.2
Other sectors	0.0	0.0	0.0	0.0	0.0	0.0	0.0	0.0	0.0
D. Net Errors and Omissions (sum of A, B, C & E)	-14.1	-18.1	11.3	6.8	-6.6	2.4	2.0	25.5	51.7
Overall balance (A+B+C+D)	22.1	20.2	8.6	-4.4	-29.8	40.2	26.5	44.2	-17.3
E. Reserves and Related Items	-22.1	-20.2	-8.6	4.4	29.8	-40.2	-26.5	-44.2	17.3
Reserve assets	-22.1	-20.2	-8.6	4.4	29.8	-40.2	-26.5	-44.2	17.3
Borrowing from IMF	0.0	0.0	0.0	0.0	0.0	0.0	0.0	0.0	6.2
Memorandum Items									
Goods and Services	0.6	16.6	-27.8	5.5	8.2	39.3	48.8	-36.9	-366.9
Exports of Goods & Services (XGS)	401.8	426.9	434.3	457.2	464.3	495.2	584.1	688.2	478.8
Current Account as a % of GDP	-6.8	-4.0	-13.4	-8.2	-9.4	-5.6	-4.6	-17.2	-43.1

Source: Maldives Monetary Authority

Last update: 2nd January, 2006

1997	1998	1999	2000	2001	2002	2003 rev. est. 15/07/04	2004 rev. est. 31/5/2005	2005 rev. est. 04/06/06	
<i>(Annual percentage change)</i>									
366.1	-37.0	261.0	-34.8	14.1	-39.2	-10.8	320.4	146.5	A. Current Account
17.1	-0.7	21.6	-11.1	1.2	-10.0	23.5	47.3	27.8	Balance on goods
12.1	6.7	-4.3	18.8	1.4	20.1	14.9	19.1	-10.7	Goods: credit
14.0	6.0	-7.6	13.1	1.9	21.6	18.3	8.3	-10.1	Domestic exports f.o.b.
4.8	9.5	9.1	39.0	0.0	15.6	4.4	56.4	-12.1	Other
15.6	1.5	13.6	-3.4	1.3	-0.4	20.2	36.9	15.5	Goods: debit
15.6	1.5	13.6	-3.4	1.3	-0.4	20.2	36.9	15.5	Imports f.o.b.
8.4	6.6	1.0	1.8	2.3	3.1	23.6	12.3	-63.7	Balance on services
8.0	6.1	3.5	1.7	1.6	2.5	19.1	17.4	-37.5	Services: credit
7.7	5.9	3.5	2.3	2.0	3.0	19.1	17.3	-39.2	Travel
7.1	5.0	9.4	1.4	0.1	1.2	8.8	30.5	20.5	Services: debit
25.4	2.6	10.2	-3.4	24.2	-4.9	8.4	11.4	-39.9	Balance on income
25.6	14.9	4.9	14.7	-20.9	-31.3	10.3	34.1	36.0	Income: credit
25.5	5.2	8.9	0.7	12.6	-9.6	8.7	14.6	-27.5	Income: debit
634.5	29.8	96.1	34.1	9.9	33.6	6.6	28.3	-215.5	Balance on current transfers
-23.6	1.6	0.2	-5.5	3.3	-46.8	19.7	-45.4	788.2	Current transfers: credit
2.4	9.6	32.4	14.2	7.2	1.3	9.4	11.3	-101.9	Current transfers: debit
-	-	-	-	-	-	-	-	-	B. Capital Account
36.0	-15.1	26.5	-47.2	-11.8	107.1	-23.5	171.0	71.1	C. Financial Account
22.5	1.0	7.0	5.9	-10.0	6.0	8.5	8.8	-35.4	Direct Investment (net)
22.5	1.0	7.0	5.9	-10.0	6.0	8.5	8.8	-35.4	Direct investment in Maldives
38.9	-18.2	31.2	-57.4	-12.7	157.2	-30.0	222.3	82.5	Other Investment (net)
64.7	-42.8	54.4	-51.9	-6.6	25.2	6.2	277.6	51.3	Other investment assets
-230.3	-212.0	-137.6	-161.1	7.9	140.9	293.0	-35.5	-273.4	Banks
4.8	0.0	0.0	-40.3	-5.0	39.5	67.5	120.6	3.7	Other sectors
-43.4	209.9	-8.6	-73.4	-44.2	1,314.0	-58.0	113.7	190.6	Other investment liabilities
									Monetary authorities
26.4	-33.3	-64.6	-137.6	-501.2	242.6	26.2	-19.5	-40.6	General government
26.4	-33.3	-64.6	-137.6	-501.2	242.6	26.2	-19.5	-40.6	o/w Loans
22.0	-16.3	-31.5	-29.7	88.7	85.9	17.5	-6.9	-15.8	Disbursements
12.2	25.9	12.1	15.1	8.7	7.4	3.6	17.7	17.3	Amortizations
-89.0	-526.8	237.5	-43.8	-184.2	-243.8	-353.3	-118.6	1,771.8	Banks
-	-	-	-	-	-	-	-	-	Other sectors
-14.3	28.5	-162.3	-39.6	-196.0	-137.0	-15.9	1,153.2	102.7	D. Net Errors and Omissions (sum of A, B, C & E)
-21.7	-8.6	-57.7	-151.4	576.5	-235.0	-34.2	66.9	-139.1	Overall balance (A+B+C+D)
-21.7	-8.6	-57.7	-151.4	576.5	-235.0	-34.2	66.9	-139.1	E. Reserves and Related Items
-21.7	-8.6	-57.7	-151.4	576.5	-235.0	-34.2	66.9	-139.1	Reserve assets
-	-	-	-	-	-	-	-	-	Borrowing from IMF
Memorandum Items									
-95.8	2,456.5	-267.6	-119.9	48.5	380.1	24.0	-175.6	894.0	Goods and Services
8.9	6.2	1.7	5.3	1.6	6.7	17.9	17.8	-30.4	Exports of Goods & Services (XGS)
Current Account as a % of GDP									

Table 14. Imports and Exports, 1997 - 2006
(In millions of U.S. dollar)

	1997	1998	1999	2000	2001	2002	2003	2004	2005
Total imports c.i.f.	348.8	354.0	402.2	388.6	393.5	391.7	470.8	641.8	744.9
Private imports	234.2	262.2	286.3	286.0	278.2	283.6	345.1	474.2	502.4
Private (excluding tourism)	166.7	177.1	198.8	219.4	214.9	223.3	264.2	318.9	341.5
Tourism	67.5	85.1	87.6	66.6	63.3	60.3	80.9	155.3	160.9
Total public imports	114.6	91.8	115.8	102.6	115.3	108.1	125.7	167.6	242.5
PNFE ^{1/}	90.7	66.5	94.4	89.9	93.1	90.3	97.4	136.1	189.3
Government	23.9	25.3	21.4	12.7	22.1	17.8	28.3	31.5	53.2
Total exports f.o.b	89.7	95.6	91.5	108.7	110.2	132.4	152.0	181.0	161.6
Domestic exports (f.o.b)	69.9	74.3	63.7	75.9	76.2	90.4	112.5	122.4	103.5
Private exports	40.8	38.9	40.4	56.4	55.4	60.7	73.2	77.3	58.4
Public exports	29.1	35.4	23.3	19.5	20.7	29.7	39.3	45.1	45.1
	<i>(Annual percentage change)</i>								
Total imports c.i.f.	15.6	1.5	13.6	-3.4	1.3	-0.4	20.2	36.3	16.1
Private imports	11.0	11.9	9.2	-0.1	-2.7	2.0	21.7	37.4	5.9
Private (excluding tourism)	2.7	6.2	12.3	10.4	-2.0	3.9	18.3	20.7	7.1
Tourism	38.9	26.1	2.9	-23.9	-5.0	-4.7	34.1	92.0	3.6
Total public imports	26.3	-19.9	26.2	-11.4	12.4	-6.2	16.3	33.3	44.7
PNFE	21.2	-26.7	42.0	-4.7	3.6	-3.0	7.9	39.7	39.1
Government	50.6	5.9	-15.3	-41.0	74.9	-19.6	58.9	11.5	68.8
Total exports f.o.b	12.1	6.7	-4.3	18.8	1.4	20.2	14.8	19.1	-10.7
Domestic exports (f.o.b)	18.2	6.3	-14.3	19.1	0.4	18.6	24.5	8.7	-15.4
Private exports	31.8	-4.6	3.6	39.6	-1.6	9.4	20.7	5.6	-24.4
Public exports	3.2	21.5	-34.1	-16.3	6.3	43.3	32.3	14.7	-0.1
MIFCO ^{2/} fish exports									
Canned - US\$ ('000)	16,996.6	17,084.0	7,548.5	11,244.9	9,020.1	10,701.9	10,622.3	12,955.4	14,908.4
Canned - cases ('000)	603.5	581.5	394.6	725.3	571.6	527.4	533.7	596.9	611.0
Canned - Unit value	28.2	29.4	19.1	15.5	15.8	20.3	19.9	21.7	24.4
Frozen fish - US\$ ('000)	12,952.9	11,929.1	13,238.2	5,902.6	7,313.7	22,821.0	19,402.0	18,076.8	23,403.9
Frozen fish - MT ('000)	13.3	12.5	24.9	13.9	13.4	37.9	35.9	25.9	32.7
Frozen fish - unit value	970.7	956.7	531.7	424.6	547.7	602.9	541.1	698.3	716.5
Exports by private sector operators in zones ^{3/}									
Tuna - US\$ ('000)	na	na	na	na	na	na	4,676.0	8,586.1	12,798.0
Tuna - MT ('000)	na	na	na	na	na	na	7.9	14.1	17.3
Memorandum items:									
World crude oil prices									
US\$ / barrel (period average) ^{4/}	na	12.7	17.7	28.0	24.2	24.4	29.5	39.9	55.5
Annual percentage change			40.1	57.9	-13.6	0.7	20.8	35.3	39.2

1/ PNFE - Public Non Financial Enterprises

2/ MIFCO- Maldives Industrial Fisheries Company

3/ For fisheries sector purposes the country has been divided into four zones. Zone 1 and 3 has been opened to private sector with two parties given licence to operate in each zone. State owned enterprise MIFCO operates in Zone 2 and 4.

4/ Source for World Crude Oil prices: <http://www.eia.doe.gov/emeu/international/crude1.html>

Source: Maldives Customs Service and MIFCO

Last update: 29th October, 2006

2005												2006								2005	2006		
Feb-05	Mar-05	Apr-05	May-05	Jun-05	Jul-05	Aug-05	Sep-05	Oct-05	Nov-05	Dec-05	Jan-06	Feb-06	Mar-06	Apr-06	May-06	Jun-06	Jul-06	Aug-06	Sep-06	Jan-Sep	Jan-Sep		
49.9	61.4	57.3	70.8	64.3	57.4	68.2	67.3	63.3	64.5	78.7	74.2	72.9	72.8	74.2	79.3	76.7	71.8	100.0	69.8	538.4	691.8	Total imports c.i.f.	
32.0	39.2	46.4	51.7	39.3	38.7	44.9	46.0	37.9	44.5	50.1	38.9	43.8	48.2	53.1	53.6	46.2	50.7	69.1	48.8	369.8	452.4	Private imports	
24.1	26.4	33.9	39.2	29.1	25.9	30.3	31.0	23.0	26.9	29.7	25.7	30.0	32.7	35.9	35.8	32.1	35.7	50.2	32.3	261.8	310.3	Private (excluding tourism)	
7.9	12.8	12.5	12.5	10.2	12.8	14.6	15.0	14.9	17.6	20.4	13.2	13.8	15.6	17.2	17.9	14.1	15.0	18.9	16.5	108.0	142.1	Tourism	
17.9	22.2	10.8	19.1	25.0	18.7	23.2	21.3	25.4	20.1	28.5	35.4	29.2	24.6	21.1	25.7	30.6	21.0	30.9	21.0	168.5	239.4	Total public imports	
15.0	16.0	6.5	16.3	22.1	16.8	17.9	14.9	20.4	13.4	22.6	32.6	25.1	20.3	14.4	17.2	24.3	16.0	25.7	17.1	132.9	192.6	PNFE ^{1/}	
2.9	6.3	4.3	2.9	2.9	1.9	5.3	6.4	5.0	6.6	6.0	2.8	4.1	4.3	6.7	8.5	6.2	5.1	5.2	3.9	35.6	46.7	Government	
13.2	13.9	14.0	17.1	11.5	8.7	14.1	9.6	13.4	13.4	17.7	18.7	19.9	25.5	16.3	25.6	12.3	14.1	19.0	13.8	117.1	165.2	Total exports f.o.b	
7.7	8.7	10.6	11.6	8.4	5.6	9.3	5.1	7.7	7.3	10.4	11.4	12.5	18.3	9.2	15.8	7.3	7.4	10.3	7.1	78.1	99.4	Domestic exports (f.o.b)	
4.3	4.2	5.0	5.9	5.1	3.1	5.8	4.0	4.9	5.0	4.8	6.8	5.1	9.4	4.6	4.3	6.2	4.5	4.1	4.8	43.8	49.8	Private exports	
3.3	4.5	5.6	5.7	3.3	2.5	3.5	1.2	2.8	2.3	5.6	4.6	7.4	8.9	4.6	11.6	1.2	2.9	6.2	2.3	34.3	49.6	Public exports	
<i>(Annual percentage change)</i>																							
32.8	24.7	16.9	35.4	47.7	11.9	13.4	9.8	8.6	-3.9	21.6	77.7	46.2	18.6	29.6	12.1	19.2	25.0	46.7	3.7	19.2	28.5	Total imports c.i.f.	
3.7	6.1	28.2	23.9	15.7	-1.5	-0.4	5.3	-18.3	-1.7	19.0	23.2	36.8	23.1	14.4	3.8	17.4	31.0	53.8	6.1	8.6	22.3	Private imports	
5.7	-4.6	40.5	34.2	27.7	-2.2	-0.2	7.7	-16.7	-3.6	13.1	17.7	24.3	23.6	6.0	-8.6	10.1	37.7	65.7	4.1	10.4	18.5	Private (excluding tourism)	
-2.1	37.9	3.8	-0.1	-8.8	0.0	-0.8	0.5	-20.6	1.4	28.7	35.4	75.1	22.0	37.1	42.6	38.3	17.5	29.2	10.2	4.5	31.6	Tourism	
167.3	80.8	-15.2	80.6	161.4	55.4	54.6	20.9	114.0	-8.6	26.5	246.2	63.1	10.6	94.7	34.3	22.1	12.4	32.8	-1.3	51.5	42.0	Total public imports	
215.5	68.3	-39.3	69.9	204.0	61.2	50.0	4.6	119.1	-32.4	42.6	332.5	67.4	27.2	120.3	5.7	10.3	-5.2	43.4	15.1	46.0	44.9	PNFE	
49.9	122.9	115.1	180.5	27.6	17.7	72.7	90.2	95.5	222.1	-11.3	4.2	40.8	-31.8	55.7	196.2	110.5	169.3	-2.4	-39.4	76.5	31.3	Government	
2.1	-21.6	-2.1	42.9	1.3	-29.3	6.5	-28.0	-23.5	-26.1	-15.4	26.9	50.1	83.5	16.4	49.2	6.7	61.1	34.2	43.7	-5.8	41.1	Total exports f.o.b	
-8.5	-30.3	10.9	40.1	0.3	-38.8	-3.4	-47.7	-27.1	-43.6	-9.1	1.7	63.9	110.8	-13.1	36.9	-12.2	31.6	10.1	37.8	-10.7	27.2	Domestic exports (f.o.b)	
-26.7	-45.4	-19.4	-3.7	-16.0	-45.5	-17.8	-32.0	-41.3	-25.1	-27.4	4.9	19.0	126.3	-7.6	-27.5	21.3	44.7	-29.0	20.6	-21.4	13.8	Private exports	
35.2	-6.4	67.0	164.4	44.4	-28.0	35.2	-70.7	26.2	-63.2	15.6	-2.6	122.3	96.6	-18.0	103.5	-64.5	15.7	73.7	96.8	8.1	44.4	Public exports	
																					Jan-Aug	Jan-Aug	MIFCO ^{2/} fish exports
346.6	1,918.8	1,322.2	940.2	1,705.6	847.6	737.8	587.9	2,634.4	1,013.8	1,232.7	752.9	907.5	749.4	275.4	1,112.7	-	227.2	1,501.1	na	9439.5	5526.1	Canned - US\$ ('000)	
14.3	80.8	54.6	38.1	70.9	33.9	30.0	23.5	107.5	41.6	48.4	31.9	37.6	31.9	25.2	45.1	-	9.0	62.2		389.9	242.8	Canned - cases ('000)	
24.2	23.8	24.2	24.7	24.0	25.0	24.6	25.0	24.5	24.4	25.5	23.6	24.1	23.5	10.9	24.7	-	25.2	24.1		24.2	22.8	Canned - Unit value	
1,214.2	2,222.6	2,366.1	3,878.9	944.1	1,174.6	1,651.3	727.3	579.4	2,378.5	4,725.7	1,573.3	6,093.9	3,238.8	4,717.0	6,760.6	5,003.0	-	932.5		14992.9	28319.2	Frozen fish - US\$ ('000)	
1.9	2.7	2.9	4.6	1.2	1.5	2.0	1.0	0.9	3.6	7.8	2.4	8.9	3.9	6.6	8.5	6.0	-	1.2		19.4	37.6	Frozen fish - MT ('000)	
641.2	830.9	809.9	838.1	795.0	792.1	837.2	724.3	655.5	657.3	606.0	655.5	681.3	833.0	718.5	794.1	827.4	-	755.8		774.4	753.4	Frozen fish - unit value	
																					Jan-Sep	Jan-Sep	Exports by private sector operators in zones ³
1,107.1	632.1	777.4	1,201.8	1,460.8	1,154.9	1,547.6	1,051.7	4.4	2,049.2	462.1	3,222.1	570.6	3,260.2	873.5	1,494.6	2,478.0	902.6	862.0	1,234.8	10,282.4	14,898.4	Tuna - US\$ ('000)	
1.6	0.8	1.0	1.5	1.8	1.3	2.1	1.3	0.0	2.8	0.8	5.2	0.8	2.9	1.0	1.9	2.9	1.0	0.9	1.4	13.7	18.2	Tuna - MT ('000)	
Memorandum items:																							
World crude oil prices																							
46.6	53.7	52.6	49.2	55.6	58.1	64.6	64.2	60.6	56.8	58.3	64.4	60.9	62.5	69.9	70.3	69.8	74.1	73.2	62.8	54.5	67.5	US\$ / barrel (period average) ^{4/}	
42.1	52.9	50.5	25.6	51.8	47.1	46.5	43.9	17.8	24.0	40.6	41.2	30.7	16.5	33.0	43.0	25.4	27.4	13.4	-2.3	44.4	25.4	Annual percentage change	

Table 15. Composition of Imports, 1997 - 2006
(In millions of U.S. dollar)

	<i>import 1/ weight</i>	1997	1998	1999	2000	2001	2002	2003	2004	2005
Total imports c.i.f.	100.0	348.8	354.0	402.2	388.6	393.5	391.7	470.8	641.8	744.9
Consumer goods	41.3	173.1	168.6	172.4	190.5	239.8	247.7
Food Items	20.2	87.2	84.9	83.8	93.6	111.4	109.8
Rice	1.1	5.8	5.2	4.5	4.2	6.3	6.7
Wheat flour	0.8	3.4	4.0	3.1	4.2	4.5	5.6
Sugar	0.7	2.7	3.2	2.9	2.7	3.5	4.3
Beverages	2.6	11.8	11.4	10.9	11.9	13.7	11.8
Other food items	14.9	63.5	61.2	62.5	70.7	83.5	81.4
Tobacco	1.1	4.9	4.6	5.1	5.3	6.3	6.4
Pharmaceuticals	0.9	3.8	3.8	3.9	4.2	5.0	6.0
Other consumer goods	19.1	77.2	75.3	79.6	87.3	117.1	125.4
Petroleum products	12.6	45.2	45.8	50.8	55.2	90.4	115.3
Petrol	0.9	2.6	2.9	3.7	3.8	8.1	10.7
Diesel (Marine gas oil)	9.8	35.6	34.0	39.7	43.7	70.0	90.6
Aviation gas	0.8	2.2	5.2	2.4	2.8	4.7	5.7
Other petroleum product (Lubricating oil, Kerosene)	1.1	4.8	3.7	4.9	4.9	7.5	8.3
Intermediate and capital goods	46.1	170.3	179.1	168.5	225.1	311.6	381.8
Construction	11.2	37.1	40.1	41.8	50.0	86.0	115.7
Cement & Cement products	1.2	4.6	4.7	4.9	5.2	7.2	9.2
Wood for construction purposes	3.4	9.9	12.4	9.9	14.7	29.9	37.0
Base metal & articles of base metal for construction purposes	2.9	8.7	10.7	9.9	13.6	22.7	33.2
Other construction related	3.8	13.9	12.3	17.0	16.5	26.2	36.3
Paper	0.4	1.4	1.9	1.6	1.8	2.1	2.0
Medical / Surgical supplies	0.4	1.3	1.4	1.5	2.1	2.8	3.5
Computer equipments and supplies	1.2	3.8	4.3	4.8	6.8	8.5	12.8
Machinery & mechanical appliances	1.6	5.5	5.8	5.8	7.6	11.1	18.2
Textiles	6.7	29.2	24.6	30.2	32.9	35.4	6.1
Chemicals & chemical products	0.7	2.9	2.8	2.8	3.3	4.3	4.7
Transport equipments and parts	8.9	37.8	41.4	26.5	50.4	46.9	50.4
Other Intermediate and Capital goods	15.1	51.3	56.8	53.5	70.1	114.5	168.3
<i>(Annual percentage change)</i>										
Total imports c.i.f.		15.6	1.5	13.6	-3.4	1.3	-0.5	20.2	36.3	16.1
Consumer goods						-2.6	2.3	10.5	25.9	3.3
Food Items						-2.6	-1.3	11.7	19.0	-1.4
Other consumer goods						-2.5	5.7	9.7	34.1	7.1
Petroleum products						1.2	10.9	8.6	63.9	27.5
Petrol						9.4	27.3	2.3	115.4	31.8
Diesel (Marine gas oil)						-4.4	16.7	10.0	60.3	29.4
Aviation gas						138.4	-53.2	16.9	65.7	20.9
Intermediate and capital goods						5.2	-5.9	33.5	38.4	22.6
Construction						8.2	4.1	19.6	72.0	34.6
Cement & Cement products						3.0	4.5	6.1	37.4	28.4
Wood for construction purposes						24.9	-20.1	48.8	102.8	23.8
Base metal & articles of base metal for construction purposes						23.6	-7.6	36.7	67.2	46.3
Other construction related						-11.5	38.7	-3.5	59.3	38.6
Transport equipments and parts						9.4	-35.9	90.1	-6.9	7.4
Other Intermediate and Capital goods						10.8	-5.9	31.0	63.4	47.0

Note: Composition of import data are available in this format only from 2000 onwards.

1/ Import weight is as a percent of 5 years total (2000-2004).

Source: Maldives Customs Services.

2005												2006								2005	2006	
Feb-05	Mar-05	Apr-05	May-05	Jun-05	Jul-05	Aug-05	Sep-05	Oct-05	Nov-05	Dec-05	Jan-06	Feb-06	Mar-06	Apr-06	May-06	Jun-06	Jul-06	Aug-06	Sep-06	Jan-Sep	Jan-Sep	
49.9	61.4	57.3	70.8	64.3	57.4	68.2	67.3	63.3	64.5	78.7	74.2	72.9	72.8	74.2	79.3	76.7	71.8	100.0	69.8	538.4	691.8	Total imports c.i.f.
16.6	18.5	17.8	20.3	17.6	19.4	22.5	22.3	22.0	23.3	26.8	20.7	22.1	22.3	26.2	29.5	23.9	26.6	32.3	27.2	175.6	230.8	Consumer goods
7.3	7.9	7.1	8.2	8.0	8.5	10.6	10.3	10.4	9.4	12.8	10.3	11.6	10.8	11.1	10.6	9.3	11.8	13.7	12.6	77.3	101.8	Food Items
0.2	0.5	0.8	0.5	0.6	0.7	0.5	0.5	0.6	0.3	0.6	0.5	1.1	0.3	0.9	0.4	0.4	0.4	0.8	0.7	5.2	5.5	Rice
0.8	0.1	0.1	0.4	0.4	0.6	0.4	0.4	0.5	0.1	1.0	0.3	0.8	0.1	0.4	0.4	0.6	0.5	0.7	0.6	4.1	4.6	Wheat flour
0.4	0.4	0.1	0.6	0.1	0.3	0.4	0.4	0.3	0.3	0.3	0.5	0.8	0.6	0.0	0.5	0.8	0.2	1.0	0.6	3.3	5.1	Sugar
0.9	0.7	0.8	1.1	0.7	0.9	1.0	1.2	0.9	1.1	1.7	1.0	1.1	1.1	1.4	1.4	1.0	1.3	1.4	1.2	8.1	11.0	Beverages
5.0	6.1	5.4	5.6	6.1	6.0	8.2	7.8	8.0	7.6	9.2	8.0	7.8	8.7	8.3	7.8	6.5	9.3	9.7	9.4	56.5	75.6	Other food items
0.5	0.6	0.6	0.5	0.5	0.6	0.5	0.5	0.4	0.4	0.6	0.7	0.4	0.6	0.5	0.5	0.6	0.6	0.6	0.6	5.0	5.3	Tobacco
0.4	0.5	0.3	0.5	0.6	0.4	0.4	0.6	0.5	0.4	0.6	0.4	0.5	0.7	0.5	0.5	0.6	0.5	0.8	0.6	4.6	5.0	Pharmaceuticals
8.3	9.5	9.8	11.0	8.5	9.9	11.0	11.0	10.7	13.1	12.8	9.3	9.5	10.2	14.2	17.9	13.4	13.7	17.2	13.4	88.8	118.7	Other consumer goods
8.0	10.1	3.3	11.2	15.7	5.2	11.4	12.7	12.5	9.1	14.3	20.8	20.1	18.1	12.8	13.6	20.9	12.9	23.4	9.3	79.4	152.1	Petroleum products
0.9	1.4	0.0	0.3	1.7	0.6	0.6	0.0	2.8	0.6	1.9	0.0	2.0	0.7	1.2	1.8	0.8	1.1	2.8	0.7	5.4	11.0	Petrol
5.8	8.2	2.7	9.0	13.2	4.0	9.6	11.9	9.1	6.5	9.7	12.7	11.3	13.6	10.4	8.9	18.5	11.3	19.7	6.3	65.3	112.6	Diesel (Marine gas oil)
0.4	0.3	0.4	0.4	0.4	0.4	0.4	0.5	0.5	0.6	0.8	0.6	0.8	2.6	0.0	1.6	0.7	0.0	0.7	0.7	3.8	7.7	Aviation gas
0.8	0.2	0.2	1.5	0.3	0.3	0.9	0.3	0.1	1.4	1.9	7.5	6.1	1.3	1.2	1.4	0.8	0.5	0.2	1.6	4.8	20.7	Other petroleum product (Lubricating oil, Kerosene)
25.3	32.8	36.2	39.3	31.0	32.8	34.2	32.4	28.8	32.2	37.5	32.7	30.7	32.4	35.1	36.2	31.9	32.3	44.3	33.4	283.4	308.9	Intermediate and capital goods
6.3	8.0	7.7	12.1	11.1	11.0	12.9	12.3	9.1	11.0	8.8	9.4	11.0	8.6	8.8	11.0	8.5	11.2	9.6	9.4	86.9	87.4	Construction
1.0	0.6	0.5	1.0	0.7	0.7	0.8	0.6	0.8	1.1	0.7	1.2	2.1	0.4	0.3	1.3	0.8	1.5	1.1	0.8	6.6	9.6	Cement & Cement products
2.3	2.2	2.5	2.9	2.8	3.3	3.9	4.5	3.5	4.3	3.1	3.3	4.2	3.0	4.4	4.8	2.9	2.8	3.3	4.5	26.2	33.1	Wood for construction purposes
1.7	3.0	2.2	5.7	4.0	3.4	3.2	2.8	1.8	3.0	1.6	2.4	2.9	2.5	2.4	2.3	2.1	3.2	2.6	1.8	26.8	22.1	Base metal & articles of base metal for construction purposes
1.3	2.3	2.6	2.5	3.6	3.6	5.0	4.3	3.0	2.7	3.4	2.5	1.9	2.7	1.7	2.6	2.7	3.7	2.7	2.3	27.3	22.6	Other construction related
0.2	0.1	0.1	0.2	0.1	0.2	0.2	0.2	0.2	0.2	0.3	0.1	0.2	0.1	0.3	0.2	0.2	0.2	0.3	0.2	1.4	1.8	Paper
0.4	0.1	0.4	0.3	0.3	0.2	0.3	0.3	0.5	0.2	0.2	0.2	0.7	0.6	0.4	0.5	0.9	0.3	0.5	0.5	2.5	4.7	Medical / Surgical supplies
0.9	1.0	2.0	1.0	1.8	1.3	0.8	1.0	0.8	0.7	0.8	1.6	0.6	1.1	1.6	1.1	1.1	1.2	1.6	1.0	10.6	10.8	Computer equipments and supplies
3.7	2.8	1.0	1.2	0.8	0.6	1.5	1.1	1.4	1.6	1.4	0.9	1.2	2.4	2.0	2.0	1.2	0.9	2.4	1.6	13.8	14.7	Machinery & mechanical appliances
0.4	0.4	0.5	0.4	0.5	0.5	0.4	0.6	0.5	0.7	0.5	0.5	0.7	0.4	0.7	0.5	0.5	0.7	0.6	0.6	4.3	5.2	Textiles
0.4	0.4	0.4	0.4	0.4	0.3	0.4	0.3	0.4	0.3	0.5	0.5	0.5	0.5	0.4	0.5	0.6	0.4	0.6	0.3	3.5	4.3	Chemicals & chemical products
3.6	4.5	3.1	4.8	2.8	7.0	3.9	4.6	5.0	2.8	6.1	4.5	4.9	3.9	5.9	4.8	4.2	4.8	10.6	5.7	36.5	49.4	Transport equipments and parts
9.4	15.5	20.9	18.9	13.2	11.7	13.8	12.0	10.9	14.9	18.7	15.0	10.9	14.8	15.0	15.7	14.6	12.7	18.1	14.1	123.8	130.8	Other Intermediate and Capital goods
<i>(Annual percentage change)</i>																						
32.8	24.7	16.9	35.4	47.7	11.9	13.4	9.8	8.6	-3.9	21.6	77.7	46.2	18.6	29.6	12.1	19.2	25.0	46.7	3.7	19.2	28.5	Total imports c.i.f.
-2.0	-0.2	-5.8	11.3	5.6	6.7	4.2	9.1	-10.0	-7.3	18.3	0.5	33.1	20.7	47.5	45.2	35.5	37.0	43.5	22.0	4.8	31.4	Consumer goods
-18.7	-18.6	-20.3	-4.6	6.1	-0.9	12.1	11.2	-7.8	-6.1	26.1	9.0	58.5	37.7	55.3	28.4	16.3	38.8	29.9	23.1	-3.5	31.7	Food Items
19.7	20.2	8.0	28.1	2.2	14.3	-0.2	7.9	-12.7	-8.5	10.1	-5.3	14.5	7.4	45.1	62.0	57.7	38.0	55.9	22.2	12.5	33.7	Other consumer goods
104.5	18.3	-47.5	57.9	454.7	-32.5	72.9	4.4	337.9	-15.3	19.1	1027.0	152.9	79.6	287.7	22.0	33.4	147.6	104.4	-26.7	22.6	91.5	Petroleum products
125.9	-23.1	-	-36.0	259.3	27.5	-24.3	-100.0	-	-61.0	69.3	-	109.3	-51.8	-	532.0	-50.3	93.1	367.0	#DIV/0!	-0.1	102.4	Petrol
194.5	41.0	-51.5	49.1	643.3	-36.5	82.4	12.8	332.6	-16.6	11.6	1126.2	94.9	65.8	286.1	-1.1	40.1	184.1	106.4	-47.3	26.9	72.4	Diesel (Marine gas oil)
5.9	-17.6	0.1	13.6	-	-41.4	24.5	23.5	26.3	24.3	24.8	8.1	92.6	725.6	-100.0	286.1	72.8	-100.0	55.1	38.1	19.0	102.8	Aviation gas
51.4	47.9	51.9	45.8	29.2	29.1	7.2	12.5	-7.1	2.6	25.2	69.2	21.3	-1.4	-2.9	-7.9	2.8	-1.6	29.4	3.1	29.2	9.0	Intermediate and capital goods
38.8	73.9	25.2	35.7	33.4	29.4	54.0	58.7	6.0	48.5	15.2	71.8	73.8	7.2	13.4	-9.3	-23.0	1.3	-25.0	-23.8	39.3	0.6	Construction
239.5	32.6	-4.1	113.3	-31.1	16.4	73.5	-37.1	114.0	115.6	50.5	107.1	102.8	-26.3	-30.2	33.0	14.1	105.4	35.1	26.9	13.2	46.5	Cement & Cement products
77.1	100.7	7.6	-5.2	-17.2	0.4	31.6	46.1	4.4	48.8	56.6	84.8	81.1	36.2	74.8	63.9	6.6	-15.3	-16.0	-0.8	20.5	26.3	Wood for construction purposes
65.1	163.9	71.9	40.4	98.9	45.1	41.2	90.2	-33.5	89.3	-10.0	125.7	74.4	-14.2	10.7	-59.6	-47.0	-6.0	-17.7	-36.9	61.6	-17.4	Base metal & articles of base metal for construction purposes
-31.2	17.1	22.8	88.7	87.0	60.0	85.5	100.9	40.3	8.4	-0.6	21.8	38.8	16.2	-35.7	2.1	-26.5	2.5	-46.4	-47.0	49.8	-17.5	Other construction related
66.4	6.7	-34.5	53.3	27.9	125.5	-47.1	-1.4	10.6	-43.6	87.4	101.2	35.5	-13.2	90.3	-0.9	49.6	-30.7	171.9	24.5	6.8	35.1	Transport equipments and parts
67.4	103.0	147.0	113.1	48.4	43.7	38.3	15.7	-11.5	15.6	25.0	79.9	15.1	-4.3	-28.5	-16.8	10.6	8.3	31.4	16.7	66.6	5.6	Other Intermediate and Capital goods

Table 16. Composition of Exports, 1997 - 2006*(Quantity in metric tonnes)*

	1997	1998	1999	2000	2001	2002	2003	2004	2005
Fish exports (excluding live fish)	30,296.1	29,768.9	37,622.0	28,333.8	29,657.0	44,595.7	69,777.2	75,397.7	82,117.5
Fresh, chilled or frozen tuna	16,248.8	14,951.3	25,351.2	13,939.4	15,286.8	31,204.4	52,384.3	58,046.5	64,669.1
Skipjack	6,871.4	3,619.6	9,498.4	8,557.3	11,246.8	25,019.9	37,556.4	39,943.4	48,099.9
Yellowfin tuna	9,314.1	11,201.5	15,779.8	5,377.7	4,029.1	5,754.9	13,818.5	15,722.7	13,533.6
Frozen reef fish	608.3	145.1	524.8	589.5	554.2	618.8	817.6	465.1	396.3
Canned	6,825.7	6,726.9	4,564.9	7,300.8	6,957.1	5,728.1	7,074.1	7,204.0	7,261.4
Dried fish	3,876.2	5,686.7	5,294.2	5,779.0	6,039.2	5,815.0	6,830.5	6,999.9	7,060.9
Salted fish	2,732.6	1,190.0	1,125.2	27.6	96.8	380.8	1,681.8	1,709.9	2,008.6
Salted reef fish	4.4	1,069.0	761.7	697.5	722.8	848.7	988.9	972.2	721.1
Live fish (no's '000)	680.9	477.6	416.7	390.2	546.3	372.9	392.5	340.6	373.1
Fish products	1,905.5	2,533.1	2,705.5	2,102.2	2,244.4	2,787.1	2,401.4	2,422.1	2,960.1
Other marine products	390.6	95.0	74.8	232.4	498.2	238.6	274.1	205.2	144.9
Garments (no's '000) ^{1/}	7,918.2	13,960.8	21,778.2	26,248.0	25,768.0	34,853.4	45,766.1	46,310.7	955.0
Others	1.6	715.4	434.8	752.2	1,732.3	573.1	1,839.9	2,270.7	4,583.0
<i>(Annual percentage change)</i>									
Fish exports (excluding live fish)	4.9	-1.7	26.4	-24.7	4.7	50.4	56.5	8.1	8.9
Fresh, chilled or frozen tuna	12.5	-8.0	69.6	-45.0	9.7	104.1	67.9	10.8	11.4
Skipjack	49.8	-47.3	162.4	-9.9	31.4	122.5	50.1	6.4	20.4
Yellowfin tuna	-4.8	20.3	40.9	-65.9	-25.1	42.8	140.1	13.8	-13.9
Canned	-5.0	-1.4	-32.1	59.9	-4.7	-17.7	23.5	1.8	0.8
Dried fish	-4.0	46.7	-6.9	9.2	4.5	-3.7	17.5	2.5	0.9
Garments (no's '000) ^{1/}	79.5	76.3	56.0	20.5	-1.8	35.3	31.3	1.2	-97.9

1/ With the expiration of the Multi-Fibre Agreement in December 2004, no garment exports were made after January 2005

Source: Maldives Customs Service

Last update: 29th October, 2006

2005											2006								2005	2006			
Feb-05	Mar-05	Apr-05	May-05	Jun-05	Jul-05	Aug-05	Sep-05	Oct-05	Nov-05	Dec-05	Jan-06	Feb-06	Mar-06	Apr-06	May-06	Jun-06	Jul-06	Aug-06	Sep-06	Jan-Sep	Jan-Sep		
5,737.6	6,204.5	8,599.8	9,520.7	6,172.1	4,192.4	7,115.9	3,017.0	6,328.0	6,530.0	9,439.7	12,339.6	12,179.7	14,381.4	6,745.9	14,974.2	7,048.8	4,732.2	7,330.8	4,679.7	59,819.8	84,412.3	Fish exports (excluding live fish)	
4,632.4	4,346.9	7,179.5	8,041.4	4,577.0	3,077.2	5,351.9	1,864.7	4,275.5	5,825.7	7,669.4	10,933.9	10,254.4	12,276.4	5,732.8	13,420.6	6,560.9	3,838.2	5,851.6	4,197.1	46,898.5	73,065.9	Fresh, chilled or frozen tuna	
2,749.9	3,336.2	6,184.8	6,493.2	2,365.4	2,274.7	2,829.9	929.6	3,459.9	4,802.4	6,667.6	8,358.8	8,536.5	9,628.6	4,100.0	12,045.3	5,041.9	2,977.6	4,954.9	3,296.0	33,169.9	58,939.5	Skipjack	
1,618.4	900.5	894.2	928.3	938.8	733.8	2,465.3	891.6	783.8	943.1	836.8	2,416.7	1,484.1	2,434.6	1,316.2	1,245.4	978.5	851.0	893.8	879.5	10,969.9	12,499.8	Yellowfin tuna	
41.3	42.6	28.4	24.6	39.9	31.3	37.6	16.3	6.5	14.2	62.1	14.9	58.5	42.7	44.6	26.9	41.2	8.9	35.5	34.8	313.5	308.0	Frozen reef fish	
581.8	973.9	671.1	505.8	843.8	402.6	397.0	296.1	1,258.6	182.4	630.0	276.2	503.4	787.9	316.5	457.8	0.0	182.9	572.0	0.0	5,190.4	3,096.6	Canned	
335.5	573.4	528.4	744.9	550.1	494.5	950.2	522.5	573.7	271.7	760.6	776.3	1,015.6	838.7	450.0	874.5	303.5	400.6	642.9	212.4	5,454.7	5,514.5	Dried fish	
146.3	267.7	192.3	203.9	120.6	151.9	288.7	232.9	160.6	188.8	265.6	287.1	268.0	343.9	111.9	138.4	109.8	232.8	159.0	174.0	1,711.8	1,824.7	Salted fish	
0.2	0.0	0.0	0.0	40.8	34.9	90.4	84.5	53.1	47.1	52.1	51.2	79.9	91.9	90.0	56.0	33.4	68.9	69.8	61.5	250.9	602.5	Salted reef fish	
24.4	29.4	47.2	19.8	34.0	14.7	44.0	21.0	26.3	43.4	25.9	37.4	38.0	20.5	41.9	27.3	22.3	31.2	30.0	44.9	277.5	293.5	Live fish (no's '000)	
154.4	352.6	100.0	301.5	301.0	200.6	200.0	150.6	454.2	76.7	366.4	157.8	211.4	358.3	247.2	480.7	0.1	75.1	342.9	1.4	2,062.7	1,874.9	Fish products	
4.2	24.7	20.2	12.2	6.9	6.1	14.2	7.0	7.3	17.5	8.2	12.7	5.5	12.6	13.4	11.1	5.3	4.7	5.3	7.4	112.0	78.1	Other marine products	
0.0	0.0	0.0	0.0	0.0	0.0	0.0	0.0	0.0	0.0	0.0	0.0	0.0	0.0	0.0	0.0	0.0	0.0	0.0	0.0	955.0	0.0	Garments (no's '000) ^{1/}	
143.4	420.4	386.8	684.0	37.6	283.7	399.8	264.4	375.3	580.8	585.7	215.9	149.2	480.5	119.1	305.7	343.0	262.1	321.3	169.9	3,041.2	2,366.8	Others	
<i>(Annual percentage change)</i>																							
69.6	-21.2	23.3	112.2	88.9	10.6	53.4	-26.6	-30.4	-25.5	23.5	33.3	112.3	131.8	-21.6	57.3	14.2	12.9	3.0	55.1	19.9	41.1	Fish exports (excluding live fish)	
125.9	-28.5	17.0	124.1	210.9	84.9	81.6	-35.7	-49.0	-15.0	34.1	39.7	121.4	182.4	-20.1	66.9	43.3	24.7	9.3	125.1	26.5	55.8	Fresh, chilled or frozen tuna	
100.4	-32.3	45.4	121.7	192.8	392.5	70.0	-53.2	-45.0	-13.6	71.6	39.2	210.4	188.6	-33.7	85.5	113.2	30.9	75.1	254.6	37.0	77.7	Skipjack	
187.1	-8.8	42.1	82.4	58.1	-37.4	101.2	4.9	-61.5	-22.7	-48.3	51.1	-8.3	170.4	47.2	34.2	4.2	16.0	-63.7	-1.4	1.1	13.9	Yellowfin tuna	
31.7	38.7	532.0	-	-14.0	-67.8	-43.4	-22.9	-	-84.5	-47.9	-46.7	-13.5	-19.1	-52.8	-9.5	-100.0	-54.6	44.1	-	7.8	-40.3	Canned	
-41.0	-8.1	6.2	12.1	-13.9	-27.0	48.0	2.6	18.3	-52.1	34.6	2.8	202.7	46.3	-14.8	17.4	-44.8	-19.0	-32.3	-59.4	1.3	1.1	Dried fish	
-	-	-	-	-	-	-	-	-	-	-	-	-	-	-	-	-	-	-	-	-97.3	-	-	Garments (no's '000) ^{1/}

Table 17. Composition of Exports, 1997 - 2006*(In millions of U.S. dollar)*

	1997	1998	1999	2000	2001	2002	2003	2004	2005
Merchandise Exports f.o.b	89.7	95.6	91.5	108.7	110.2	132.4	152.0	181.0	161.6
Domestic exports	69.9	74.3	63.7	75.9	76.2	90.4	112.5	122.4	103.5
Total marine exports	55.3	56.5	38.8	40.7	43.7	55.8	76.2	89.9	101.8
Fish and fish products	54.5	56.1	38.3	38.3	40.9	52.7	72.8	87.5	100.0
Fish exports (excluding live fish)	49.1	51.9	34.4	34.0	35.8	49.2	69.1	84.4	96.6
Fresh, chilled or frozen tuna	21.4	23.0	13.4	9.9	12.9	27.5	41.8	56.0	66.6
Skipjack	4.9	3.8	3.6	4.0	5.9	14.9	20.4	25.9	33.6
Yellowfin tuna	16.4	18.9	9.6	5.8	7.0	10.7	17.1	24.6	26.5
Frozen reef fish	2.3	0.6	2.0	1.7	1.8	1.7	2.2	1.4	1.2
Canned	16.3	16.7	8.6	10.8	9.3	10.0	12.1	13.4	15.2
Dried fish	6.7	9.2	9.0	10.9	11.0	9.0	10.9	11.6	11.6
Salted fish	1.5	1.2	0.7	0.0	0.1	0.4	1.3	1.3	1.5
Salted reef fish	0.9	1.2	0.7	0.7	0.7	0.6	0.8	0.7	0.5
Live fish	3.1	2.3	1.9	2.0	3.1	1.8	1.7	1.4	1.3
Fish products	2.3	2.0	2.0	2.3	2.0	1.8	1.9	1.7	2.1
Other marine products	0.8	0.4	0.4	2.5	2.8	3.0	3.4	2.4	1.8
Garments ^{1/}	14.5	17.8	24.8	35.0	32.3	34.5	36.0	31.8	0.6
Other	0.1	0.1	0.1	0.1	0.2	0.1	0.4	0.6	1.1
Re-exports	19.7	21.3	27.8	32.8	34.0	42.1	39.5	58.6	58.1
<i>(Annual percentage change)</i>									
Merchandise Exports f.o.b	12.1	6.7	-4.3	18.8	1.4	20.2	14.8	19.1	-10.7
Domestic exports	18.2	6.3	-14.3	19.1	0.4	18.6	24.5	8.7	-15.4
Total marine exports	13.5	2.1	-31.3	5.1	7.2	27.6	36.6	18.0	13.2
Fish and fish products	13.6	2.9	-31.7	-0.1	6.7	29.1	38.0	20.2	14.3
Fish exports (excluding live fish)	13.6	5.7	-33.6	-1.3	5.2	37.5	40.6	22.1	14.5
Fresh, chilled or frozen tuna	33.7	7.6	-41.7	-26.3	29.9	113.3	52.3	34.0	18.8
Skipjack	42.9	-23.8	-3.2	11.2	44.5	153.8	37.5	27.0	29.4
Yellowfin tuna	35.4	15.3	-49.2	-39.4	19.3	53.8	60.1	43.8	7.7
Canned	-1.7	2.4	-48.4	25.2	-13.3	7.7	20.7	10.3	14.1
Dried fish	2.9	37.0	-1.6	20.8	1.3	-18.4	20.7	7.3	-0.5
Garments ^{1/}	40.5	22.6	39.5	41.3	-7.8	6.9	4.2	-11.6	-98.1
Other	-5.1	8.0	30.4	18.0	3.7	23.6	-6.2	48.5	-0.8

1/ With the expiration of the Multi-Fibre Agreement in December 2004, no garment exports were made after January 2005

Source: Maldives Customs Service

Last update: 29th October, 2006

2005											2006									2005	2006		
Feb-05	Mar-05	Apr-05	May-05	Jun-05	Jul-05	Aug-05	Sep-05	Oct-05	Nov-05	Dec-05	Jan-06	Feb-06	Mar-06	Apr-06	May-06	Jun-06	Jul-06	Aug-06	Sep-06	Jan-Sep	Jan-Sep		
13.2	13.9	14.0	17.1	11.5	8.7	14.1	9.6	13.4	13.4	17.7	18.7	19.9	25.5	16.3	25.6	12.3	14.1	19.0	13.8	117.1	165.2	Merchandise Exports f.o.b	
7.7	8.7	10.6	11.6	8.4	5.6	9.3	5.1	7.7	7.3	10.4	11.4	12.5	18.3	9.2	15.8	7.3	7.4	10.3	7.1	78.1	99.4	Domestic exports	
7.6	8.6	10.5	11.4	8.3	5.6	9.1	5.1	7.6	7.1	10.3	11.3	12.5	18.3	9.2	15.8	7.1	7.3	10.2	6.4	76.8	98.0	Total marine exports	
7.6	8.4	10.2	11.2	8.2	5.5	8.9	4.9	7.5	7.1	10.2	11.2	12.4	18.1	9.1	15.7	7.1	7.2	10.1	6.3	75.2	97.1	Fish and fish products	
7.3	8.0	10.0	10.9	7.9	5.4	8.6	4.7	7.2	6.8	9.9	10.9	12.2	17.8	8.8	15.3	7.0	7.1	9.8	6.0	72.7	95.1	Fish exports (excluding live fish)	
5.0	4.8	7.5	8.6	5.1	3.5	5.8	3.0	3.3	5.7	6.8	8.7	9.1	14.1	7.0	12.1	6.3	5.1	7.0	5.4	50.8	74.7	Fresh, chilled or frozen tuna	
1.6	2.4	4.9	5.4	1.9	1.8	2.1	0.7	1.4	3.4	4.0	5.0	5.7	8.4	2.9	9.4	4.0	2.4	4.1	2.7	24.8	44.6	Skipjack	
2.7	1.9	2.2	2.3	1.8	1.5	3.4	2.1	1.8	2.0	2.0	2.8	2.5	4.6	2.8	2.2	1.9	2.7	2.9	2.6	20.7	25.0	Yellowfin tuna	
0.2	0.2	0.1	0.1	0.1	0.1	0.1	0.0	0.0	0.0	0.2	0.1	0.1	0.2	0.1	0.1	0.2	0.0	0.1	0.2	1.0	1.1	Frozen reef fish	
1.5	1.9	1.4	1.0	1.7	0.8	0.9	0.6	2.6	0.4	1.3	0.6	1.0	1.7	0.6	1.1	0.0	0.5	1.5	0.0	10.9	7.0	Canned	
0.6	1.0	0.8	1.1	0.8	0.8	1.6	0.8	1.2	0.4	1.3	1.3	1.7	1.5	1.0	1.8	0.4	0.6	0.8	0.3	8.7	9.6	Dried fish	
0.1	0.1	0.1	0.1	0.1	0.1	0.2	0.2	0.1	0.1	0.2	0.2	0.2	0.3	0.1	0.1	0.1	0.8	0.2	0.1	1.1	2.1	Salted fish	
0.0	0.1	0.0	0.0	0.0	0.0	0.1	0.1	0.0	0.0	0.0	0.0	0.1	0.2	0.1	0.0	0.0	0.1	0.1	0.0	0.4	0.6	Salted reef fish	
0.1	0.1	0.2	0.0	0.1	0.0	0.2	0.0	0.1	0.2	0.1	0.1	0.1	0.0	0.1	0.1	0.1	0.1	0.1	0.2	1.0	0.9	Live fish	
0.2	0.3	0.0	0.3	0.2	0.1	0.1	0.1	0.2	0.1	0.2	0.1	0.2	0.2	0.1	0.3	0.0	0.0	0.2	0.0	1.5	1.1	Fish products	
0.1	0.3	0.3	0.2	0.1	0.1	0.2	0.1	0.1	0.0	0.1	0.2	0.1	0.2	0.1	0.1	0.1	0.1	0.1	0.1	1.6	0.8	Other marine products	
0.0	0.0	0.0	0.0	0.0	0.0	0.0	0.0	0.0	0.0	0.0	0.0	0.0	0.0	0.0	0.0	0.0	0.0	0.0	0.0	0.6	0.0	Garments ^{1/}	
0.0	0.1	0.1	0.1	0.0	0.0	0.2	0.1	0.1	0.2	0.1	0.0	0.1	0.1	0.0	0.1	0.2	0.1	0.1	0.7	0.7	1.4	Other	
5.6	5.2	3.5	5.6	3.1	3.1	4.8	4.5	5.7	6.2	7.3	7.4	7.3	7.1	7.2	9.7	4.9	6.6	8.7	6.7	38.9	65.8	Re-exports	
<i>(Annual percentage change)</i>																							
2.1	-21.6	-2.1	42.9	1.3	-29.3	6.5	-28.0	-23.5	-26.1	-15.4	26.9	50.1	83.5	16.4	49.2	6.7	61.1	34.2	43.7	-5.8	41.1	Merchandise Exports f.o.b	
-8.5	-30.3	10.9	40.1	0.3	-38.7	-3.4	-47.7	-27.1	-43.6	-9.1	1.7	63.9	110.8	-13.1	36.9	-12.2	31.6	10.1	37.8	-10.7	27.2	Domestic exports	
58.6	-7.5	52.6	135.6	54.4	-13.7	28.0	-30.9	-8.2	-30.6	7.2	8.0	63.8	111.3	-12.9	37.9	-14.0	30.9	11.2	25.8	24.3	27.6	Total marine exports	
63.5	-6.6	55.4	141.6	58.7	-12.2	28.2	-30.8	-7.5	-30.1	7.3	8.3	64.1	116.5	-11.3	39.5	-13.3	32.0	13.2	27.4	26.0	29.1	Fish and fish products	
62.1	-6.3	59.0	154.4	53.7	-12.7	26.2	-26.7	-7.9	-30.7	6.3	9.9	65.8	122.0	-11.5	40.6	-10.5	33.3	14.3	27.0	26.6	30.8	Fish exports (excluding live fish)	
101.3	-14.0	53.3	175.6	137.1	35.3	38.6	-31.9	-53.1	-8.2	18.0	16.8	80.3	193.1	-7.9	41.1	24.2	47.2	21.9	76.9	37.0	47.2	Fresh, chilled or frozen tuna	
71.7	-24.7	88.5	184.3	218.5	406.0	51.0	-63.5	-56.8	-8.6	70.6	30.6	249.5	241.3	-40.8	73.4	110.9	32.0	93.7	279.4	48.4	79.9	Skipjack	
137.7	20.6	96.0	168.7	51.0	-32.0	34.3	-10.2	-50.2	-14.2	-14.0	1.1	-5.7	140.3	28.4	-5.2	1.4	81.8	-15.3	24.3	26.6	20.7	Yellowfin tuna	
92.2	52.3	633.9	-	-0.9	-61.2	-33.0	-15.5	-	-81.4	-45.7	-42.6	-31.5	-13.7	-53.9	8.5	-	-43.9	75.5	-100.0	26.9	-35.8	Canned	
-38.6	-12.4	-9.3	11.4	-22.1	-30.2	52.6	-18.6	70.4	-63.2	49.8	2.9	206.7	54.4	24.4	68.5	-46.3	-21.6	-46.6	-61.6	-3.7	10.2	Dried fish	
-	-	-	-	-	-	-	-	-	-	-	-	-	-	-	-	-	-	-	-	-	-97.6	-	Garments ^{1/}
21.4	-1.0	-27.9	49.0	4.0	-1.8	32.8	26.9	-18.1	16.6	-22.9	105.5	31.4	37.8	106.1	74.8	57.0	114.8	80.8	50.3	5.7	68.9	Re-exports	

Table 18. Direction of Trade (Imports) 1997 - 2006*(In millions of U.S. dollars)*

	1997	1998	1999	2000	2001	2002	2003	2004	2005	
Total IMPORTS CIF	320.8	325.5	367.2	357.3	376.1	391.7	470.8	641.8	744.9	
Asia	225.5	219.4	253.9	261.8	259.2	271.8	342.3	418.8	452.0	
China	0.5	0.5	1.7	1.0	1.5	2.7	2.9	8.0	16.0	
Japan	10.1	11.6	12.5	12.1	8.4	7.1	10.4	12.1	13.4	
Malaysia	28.0	16.7	3.5	44.6	32.9	20.3	36.2	48.7	53.4	
Thailand	7.5	10.0	11.1	12.0	11.6	13.0	23.9	24.5	28.5	
Singapore	95.1	91.9	104.6	91.3	94.1	101.1	117.1	160.8	179.7	
Other	16.6	17.6	42.6	18.5	21.6	24.6	37.7	28.2	31.6	
SAARC	67.7	71.0	77.9	82.4	89.1	103.0	114.2	136.5	129.3	
India	37.1	35.8	36.8	32.8	39.3	41.9	47.7	65.8	83.9	
Pakistan	1.1	2.1	1.6	1.2	1.4	1.5	1.7	2.2	2.9	
Sri Lanka	29.5	33.0	39.5	48.4	48.4	59.5	64.7	68.5	42.6	
Europe	43.4	54.5	53.5	38.4	53.7	59.2	56.6	70.0	115.0	
France	1.6	2.4	10.7	5.3	4.5	23.2	12.4	12.4	16.3	
Germany, Federal	7.0	8.6	8.6	5.3	10.7	4.8	6.4	10.8	15.0	
UK	12.9	13.6	12.7	8.7	10.1	6.4	8.3	13.7	33.5	
Other	22.0	30.0	21.6	19.1	28.4	24.7	29.5	33.2	50.2	
North America	8.2	4.4	12.3	13.3	13.1	11.1	12.7	17.2	13.9	
Canada	3.6	1.3	4.9	5.3	5.3	6.1	6.8	8.8	5.4	
USA	4.7	3.1	7.4	7.9	7.8	5.0	5.9	8.4	8.5	
Oceania	10.8	8.4	6.1	10.5	13.6	13.6	18.4	25.7	21.9	
Australia	3.6	4.4	4.6	5.1	8.3	11.2	15.3	17.3	15.8	
Other	7.3	4.0	1.5	5.3	5.3	2.4	3.1	8.4	6.1	
Middle East	29.9	35.8	38.1	31.2	32.9	31.6	37.5	101.3	136.1	
U.A.E.	29.5	35.4	37.6	30.3	31.1	28.0	35.6	66.6	117.2	
Other	0.4	0.4	0.5	0.9	1.9	3.6	1.9	34.7	19.0	
Others	2.9	2.9	3.3	2.3	3.6	4.4	3.4	8.8	6.0	
			<i>(Annual percentage change)</i>							
Total IMPORTS CIF	15.6	1.5	12.8	-2.7	5.3	4.2	20.2	36.3	16.1	
Asia	11.6	-2.7	15.7	3.1	-1.0	4.9	25.9	22.3	7.9	
China	-82.9	2.3	232.3	-42.8	51.8	82.4	6.6	175.8	101.0	
Japan	5.1	15.5	7.7	-3.5	-30.5	-15.2	45.2	16.6	10.8	
Malaysia	19.3	-40.3	-79.2	1,179.5	-26.2	-38.2	78.0	34.7	9.6	
Thailand	23.4	34.1	10.8	7.9	-3.0	12.2	83.1	2.5	16.4	
Singapore	7.2	-3.4	13.9	-12.8	3.1	7.4	15.8	37.4	11.7	
SAARC	21.7	4.8	9.7	5.8	8.2	15.6	10.9	19.6	-5.3	
India	11.6	-3.5	2.6	-10.9	19.8	6.8	13.9	37.9	27.4	
Sri Lanka	39.8	11.9	19.5	22.7	0.0	22.9	8.7	5.8	-37.8	
Europe	-3.9	25.7	-1.8	-28.3	39.8	10.3	-4.3	23.7	64.2	
France	-43.2	51.7	352.9	-50.5	-14.0	412.2	-46.7	-0.3	31.6	
Germany, Federal	28.4	23.1	-0.5	-37.7	99.8	-55.4	35.3	67.0	39.5	
UK	28.9	5.5	-6.5	-31.5	15.9	-36.2	28.5	65.3	144.8	
North America	60.1	-46.4	178.0	7.8	-1.0	-15.5	14.6	35.4	-19.1	
Oceania	128.5	-22.3	-27.5	71.2	30.1	0.1	35.0	39.9	-14.9	
Middle East	65.5	19.9	6.3	-18.2	5.7	-4.1	18.6	170.4	34.3	
U.A.E.	67.0	20.1	6.2	-19.5	2.6	-9.8	27.1	87.1	75.9	

Source: Maldives Customs Service

Last update: 29th October, 2006

2005												2006								2005	2006	
Feb-05	Mar-05	Apr-05	May-05	Jun-05	Jul-05	Aug-05	Sep-05	Oct-05	Nov-05	Dec-05	Jan-06	Feb-06	Mar-06	Apr-06	May-06	Jun-06	Jul-06	Aug-06	Sep-06	Jan-Sep	Jan-Sep	
49.9	61.4	57.3	70.8	64.3	57.4	68.2	67.3	63.3	64.5	78.7	74.2	72.9	72.8	74.2	79.3	76.7	71.8	100.0	69.8	538.4	691.8	Total IMPORTS CIF
26.3	36.8	34.5	39.0	36.2	35.7	48.5	42.1	38.6	41.7	43.4	44.4	41.2	38.8	43.8	52.5	45.3	48.1	61.1	48.5	328.3	423.8	Asia
0.6	0.5	6.8	1.1	1.5	0.8	0.9	1.0	0.7	0.7	0.9	1.3	1.0	0.7	1.4	4.3	1.2	1.5	1.5	1.3	13.7	14.3	China
1.5	1.3	0.9	0.6	0.9	0.5	1.1	1.2	1.7	0.5	2.5	1.7	4.4	0.8	1.2	0.9	1.3	1.9	7.4	3.1	8.6	22.7	Japan
2.3	3.5	4.3	4.0	4.5	4.5	6.3	5.3	4.8	5.7	5.7	4.7	4.3	4.1	5.9	5.5	4.4	4.8	4.9	4.9	37.3	43.6	Malaysia
1.9	1.9	1.9	1.8	2.1	3.0	2.8	2.5	2.6	3.0	3.1	4.4	3.9	4.1	4.9	7.0	5.8	3.4	4.3	3.9	19.9	41.7	Thailand
9.5	16.5	10.4	17.6	13.5	14.0	22.3	18.2	14.8	17.8	12.7	18.6	13.2	16.1	19.3	20.4	17.2	19.4	24.0	19.9	134.5	168.2	Singapore
2.4	2.2	2.2	3.6	3.0	2.4	2.6	2.2	2.1	2.1	4.2	2.9	2.3	1.7	2.3	2.6	1.7	4.3	4.0	2.9	23.3	24.6	Other
8.1	10.9	7.8	10.4	10.7	10.6	12.6	11.7	12.0	12.0	14.2	10.9	12.0	11.2	8.8	11.8	13.6	12.8	15.0	12.5	91.1	108.7	SAARC
5.3	7.4	4.7	6.3	6.9	7.1	8.8	8.0	7.5	7.2	8.8	6.4	7.6	5.8	4.8	6.1	7.7	7.2	9.6	7.8	60.4	63.0	India
0.2	0.4	0.2	0.2	0.2	0.2	0.2	0.2	0.4	0.2	0.3	0.2	0.2	0.2	0.3	0.1	0.3	0.3	0.3	0.1	2.0	1.9	Pakistan
2.6	3.1	2.9	3.9	3.6	3.3	3.6	3.4	4.1	4.6	5.1	4.4	4.2	5.2	3.7	5.6	5.6	5.3	5.1	4.6	28.7	43.8	Sri Lanka
8.7	9.4	13.2	13.2	8.4	11.0	7.1	8.0	6.0	11.1	12.7	8.4	6.7	8.3	6.7	7.0	5.0	6.4	9.6	6.4	85.3	64.5	Europe
0.9	0.9	0.6	3.4	1.0	0.6	0.6	1.2	0.5	0.8	5.4	1.6	1.2	1.8	1.0	0.8	0.5	0.8	3.2	1.6	9.5	12.4	France
0.6	0.6	1.0	1.1	0.4	4.9	1.1	0.9	0.8	0.8	1.8	2.8	1.5	1.2	1.0	1.3	1.5	1.3	1.4	0.8	11.7	12.8	Germany, Federal
1.6	4.0	6.1	6.1	4.5	2.8	1.5	2.8	0.8	1.1	1.5	1.0	0.9	1.3	1.3	1.7	1.0	0.8	1.0	1.0	30.1	10.1	UK
5.5	4.0	5.5	2.6	2.6	2.6	3.9	3.1	3.9	8.4	4.0	3.1	3.0	3.9	3.4	3.2	1.9	3.4	4.1	3.1	34.0	29.2	Other
1.4	0.7	0.6	1.2	0.6	0.6	0.9	2.7	0.9	1.3	1.4	1.0	1.6	3.1	2.0	2.1	2.9	1.6	2.8	1.3	10.2	18.4	North America
0.8	0.1	0.1	0.3	0.0	0.2	0.1	1.6	0.2	0.5	0.6	0.1	0.6	2.0	0.8	1.1	0.0	0.4	0.3	0.2	4.1	5.5	Canada
0.6	0.6	0.5	0.9	0.6	0.3	0.9	1.1	0.7	0.9	0.8	0.9	1.0	1.1	1.1	1.1	2.8	1.2	2.5	1.1	6.1	12.9	USA
2.3	2.0	1.8	1.4	1.5	1.4	2.1	1.8	1.4	1.6	3.2	1.3	2.0	1.8	3.7	2.6	1.8	2.3	2.8	2.5	15.6	20.6	Oceania
1.0	1.2	1.2	1.2	1.1	1.0	1.4	1.4	1.3	1.2	3.2	1.3	1.4	1.4	2.1	1.8	1.7	1.4	2.3	1.6	10.3	14.8	Australia
1.3	0.8	0.7	0.3	0.4	0.4	0.7	0.5	0.2	0.4	0.1	0.0	0.5	0.4	1.6	0.8	0.1	0.9	0.5	0.9	5.4	5.8	Other
10.3	12.0	6.6	15.3	17.2	8.4	9.0	12.5	16.0	8.6	17.2	18.6	21.4	20.6	17.5	14.1	21.5	13.0	23.2	10.9	94.3	160.8	Middle East
4.2	8.2	5.1	10.2	16.1	8.2	8.8	12.2	15.7	8.4	17.0	18.4	21.2	20.4	17.2	13.9	20.7	13.0	22.9	9.3	76.0	157.1	U.A.E.
6.1	3.8	1.5	5.0	1.1	0.2	0.2	0.3	0.3	0.2	0.1	0.2	0.2	0.2	0.3	0.3	0.8	0.1	0.3	1.5	18.3	3.7	Other
0.9	0.6	0.6	0.6	0.4	0.4	0.5	0.3	0.3	0.2	0.8	0.5	0.2	0.2	0.5	1.0	0.3	0.3	0.4	0.3	4.7	3.7	Others
<i>(Annual percentage change)</i>																						
32.8	24.7	16.9	35.4	47.7	11.9	13.4	9.8	8.6	-3.9	21.6	77.7	46.2	18.6	29.6	12.1	19.2	25.0	46.7	3.7	19.2	28.5	Total IMPORTS CIF
-5.5	6.3	4.7	16.4	7.7	10.0	23.6	4.4	4.1	7.1	34.0	52.4	56.8	5.4	27.0	34.5	25.1	34.7	26.0	15.2	5.8	29.1	Asia
123.6	84.9	1519.5	318.3	28.6	-25.4	-12.3	-1.8	-29.5	37.6	45.5	137.3	85.5	47.6	-79.0	292.2	-19.5	93.1	70.3	30.0	135.3	4.3	China
55.6	10.9	-23.3	-11.8	34.4	-16.5	-71.5	88.5	150.9	-7.4	414.6	122.6	202.6	-38.2	28.6	44.5	48.6	315.9	603.8	168.6	-16.8	164.3	Japan
-31.9	-31.4	-25.9	11.3	6.3	7.1	84.8	80.1	39.2	94.5	86.5	71.9	86.6	18.2	37.8	38.2	-0.6	8.3	-21.8	-8.1	-5.2	16.8	Malaysia
53.7	1.8	2.0	-21.8	-8.9	78.6	83.1	9.2	-2.3	32.3	12.4	146.4	103.9	110.0	155.1	289.2	171.7	12.5	52.9	54.0	17.9	109.7	Thailand
-7.6	43.5	-11.0	31.4	7.7	29.3	62.6	-4.7	-3.5	12.8	-6.5	49.6	38.5	-2.6	84.7	16.4	27.6	38.8	7.9	9.3	15.7	25.1	Singapore
-16.9	-15.3	-20.8	-8.7	5.3	-7.1	-5.3	-3.5	1.4	-11.6	47.3	32.7	48.4	3.1	12.2	14.0	27.2	20.1	19.0	7.3	-10.2	19.4	SAARC
17.6	35.1	7.4	34.3	27.0	24.9	39.2	37.3	18.1	5.5	60.1	8.6	44.9	-21.1	0.7	-2.6	11.6	0.7	9.5	-3.6	28.0	4.2	India
-48.3	-56.2	-44.9	-39.1	-20.8	-41.8	-46.4	-43.5	-23.1	-29.7	27.8	104.4	59.9	65.9	26.5	43.1	54.7	63.2	39.8	36.3	-45.3	52.5	Sri Lanka
153.7	101.0	213.6	74.4	116.4	174.2	41.6	40.6	2.6	16.3	-0.6	36.6	-23.4	-12.5	-48.9	-47.2	-41.1	-41.8	35.6	-19.6	103.3	-24.4	Europe
125.0	3.5	53.0	746.3	335.7	-14.9	3.3	327.8	-66.8	-78.2	91.0	421.8	36.0	102.3	59.5	-77.4	-49.6	29.9	406.4	30.2	128.4	30.5	France
-11.0	4.4	89.9	-31.1	-41.6	674.8	-25.7	-9.8	0.8	-7.4	69.1	190.7	147.8	110.9	7.8	12.8	274.7	-73.5	19.6	-17.3	44.4	9.7	Germany, Federal
148.4	320.0	653.3	89.9	420.0	351.0	51.0	46.9	-41.6	7.9	76.7	23.9	-43.8	-66.2	-78.6	-72.1	-76.8	-70.3	-31.4	-64.1	187.4	-66.5	UK
121.6	-32.2	-72.6	119.0	-12.1	-68.4	-66.6	54.8	-58.1	-8.4	34.9	-39.7	12.6	373.3	255.0	76.5	378.4	189.4	202.2	-50.0	-18.0	80.0	North America
70.5	87.7	-8.5	-30.4	-5.6	-45.2	-2.4	-24.9	-61.2	-48.9	28.8	3.0	-15.4	-10.4	101.8	79.9	20.1	64.5	31.8	33.6	-4.9	31.7	Oceania
147.4	58.2	-12.6	89.2	403.9	-15.8	-9.3	25.6	101.5	-33.0	16.6	489.1	107.7	72.5	164.4	-7.4	24.8	54.9	159.1	-12.7	43.3	70.5	Middle East
2.9	9.9	35.6	89.9	656.1	49.2	40.4	65.1	171.1	60.5	99.4	501.0	410.1	150.4	236.6	35.5	28.5	58.2	161.1	-23.2	61.6	106.7	U.A.E.

Table 19. Direction of Trade (Exports), 1997 - 2006
(In millions of U.S. dollars)

	1997	1998	1999	2000	2001	2002	2003	2004	2005	
DOMESTIC EXPORTS (f.o.b)	73.2	74.3	63.7	75.9	76.2	90.4	112.5	122.4	103.5	
Asia	41.8	39.3	30.0	28.0	34.8	43.1	57.4	66.0	75.2	
Japan	10.4	10.7	2.0	3.2	4.4	10.4	11.6	14.3	22.4	
Thailand	6.3	9.6	10.9	4.3	6.9	13.2	18.4	28.7	22.3	
Singapore	7.9	3.2	1.1	3.3	1.7	2.8	3.3	4.8	5.7	
Other	5.5	2.9	3.5	3.4	3.5	1.9	7.3	1.9	7.1	
SAARC	11.5	12.9	12.5	13.8	16.8	14.0	15.6	15.5	17.1	
India	0.2	0.1	0.2	0.2	1.2	0.1	0.3	0.5	1.0	
Sri Lanka	11.4	12.8	12.3	13.5	15.7	13.9	15.3	15.1	16.1	
Europe	18.4	19.6	11.1	14.1	11.3	12.7	17.7	23.8	27.4	
France	0.2	0.2	0.0	0.0	0.0	0.1	0.6	2.8	4.2	
Germany, Federal	2.7	5.0	5.9	6.9	3.9	3.0	4.3	6.0	4.7	
UK	14.9	14.4	4.6	5.5	6.0	8.6	10.9	12.0	12.4	
Other	0.5	0.0	0.5	1.7	1.4	0.9	1.9	3.0	6.1	
North America	13.1	15.4	19.4	33.7	29.9	34.5	36.4	32.4	0.9	
USA	13.1	15.4	19.4	33.6	29.3	34.4	36.3	32.4	0.8	
Oceania	0.0	0.0	0.0	0.0	0.0	0.0	0.0	0.0	0.0	
Middle East	0.0	0.0	3.2	0.0	0.0	0.1	0.0	0.1	0.0	
U.A.E.	0.0	0.0	3.2	0.0	0.0	0.1	0.0	0.0	0.0	
Other	0.0	0.0	0.0	0.0	0.0	0.0	0.0	0.1	0.0	
Others	0.0	0.0	0.0	0.0	0.1	0.0	1.0	0.0	0.0	
			<i>(Annual percentage change)</i>							
DOMESTIC EXPORTS (f.o.b)	23.8	1.5	-14.3	19.1	0.4	18.6	24.5	8.7	-15.4	
Asia	27.0	-5.9	-23.7	-6.4	24.2	23.7	33.2	15.0	13.9	
Japan	66.4	2.8	-81.0	55.4	38.1	137.8	12.2	23.0	56.4	
Thailand	12.4	51.6	13.6	-60.8	62.4	91.3	39.4	55.7	-22.2	
Singapore	50.0	-59.1	-66.4	201.6	-46.5	59.0	17.1	47.9	19.0	
SAARC	5.6	11.7	-3.3	10.4	22.3	-16.8	11.7	-0.7	10.1	
India	16.9	-41.6	88.5	27.6	391.6	-89.9	194.0	31.5	118.8	
Sri Lanka	5.4	12.5	-4.1	10.2	15.8	-11.3	10.1	-1.4	6.8	
Europe	-8.4	6.8	-43.6	27.7	-20.1	12.5	39.7	34.4	15.1	
France	23.6	-33.8	-97.0	184.1	-46.4	1,890.7	298.3	399.2	48.3	
Germany, Federal	-57.2	84.4	18.3	15.5	-43.6	-21.9	41.9	40.0	-21.3	
UK	15.4	-3.3	-68.1	19.8	8.4	44.3	26.9	9.6	3.4	

Source: Maldives Customs Service

Last update: 30th October, 2006

2005												2006								2005	2006	
Feb-05	Mar-05	Apr-05	May-05	Jun-05	Jul-05	Aug-05	Sep-05	Oct-05	Nov-05	Dec-05	Jan-06	Feb-06	Mar-06	Apr-06	May-06	Jun-06	Jul-06	Aug-06	Sep-06	Jan-Sep	Jan-Sep	
7.7	8.7	10.6	11.6	8.4	5.6	9.3	5.1	7.7	7.3	10.4	11.4	12.5	18.3	9.2	15.8	7.3	7.4	10.3	7.1	78.1	99.4	DOMESTIC EXPORTS (f.o.b)
5.4	5.8	8.6	9.4	5.7	4.1	7.2	3.6	3.9	6.0	7.4	9.4	7.9	13.1	6.8	11.5	4.9	4.9	5.9	5.4	57.9	69.8	Asia
2.1	1.7	2.3	2.9	1.6	0.6	2.3	0.8	0.8	1.2	2.4	1.9	2.7	4.2	2.0	1.0	1.8	0.2	1.7	0.1	18.0	15.7	Japan
2.2	2.3	2.9	2.1	0.4	2.3	2.3	1.1	0.1	2.2	2.0	5.1	0.8	2.9	2.0	5.4	0.5	0.9	2.3	2.6	18.1	22.5	Thailand
0.2	0.1	0.2	1.5	1.5	0.0	0.1	0.1	1.0	0.0	0.6	0.1	0.8	1.4	0.2	1.8	0.1	0.0	0.1	0.1	4.1	4.5	Singapore
0.0	0.1	2.0	1.0	0.9	0.0	0.2	0.0	0.6	1.5	0.6	0.1	1.5	2.1	1.7	2.0	1.6	1.8	0.3	1.5	4.4	12.6	Other
0.8	1.4	1.2	1.8	1.3	1.1	2.1	1.5	1.3	1.1	1.8	1.5	2.1	2.4	0.9	1.3	1.0	2.1	1.4	1.1	12.9	13.6	SAARC
0.0	0.1	0.1	0.1	0.0	0.1	0.1	0.1	0.1	0.2	0.1	0.1	0.1	0.1	0.0	0.1	0.2	0.1	0.1	0.0	0.6	0.7	India
0.8	1.4	1.2	1.7	1.3	1.0	2.0	1.4	1.2	1.0	1.7	1.5	2.0	2.3	0.9	1.3	0.8	1.9	1.3	1.0	12.2	12.9	Sri Lanka
2.3	2.9	2.0	2.2	2.6	1.5	2.1	1.5	3.8	1.2	3.0	1.9	2.8	3.4	2.2	3.1	0.9	2.4	3.5	1.7	19.4	21.9	Europe
0.3	0.4	0.2	0.5	0.4	0.3	0.4	0.2	0.3	0.2	0.6	0.4	0.4	0.5	0.4	0.4	0.4	0.6	0.7	0.6	3.1	4.2	France
0.6	0.5	0.5	0.3	0.9	0.2	0.5	0.3	0.7	0.0	0.0	0.2	0.8	0.9	0.1	0.7	0.1	0.4	0.7	0.3	4.0	4.2	Germany, Federal
1.3	1.6	1.2	1.1	1.2	0.9	0.8	0.8	2.3	0.0	0.0	0.7	0.8	1.5	1.0	0.9	0.4	1.0	1.6	0.7	10.0	8.7	UK
0.1	0.4	0.1	0.2	0.2	0.1	0.5	0.2	0.5	1.0	2.4	0.5	0.9	0.5	0.7	1.1	0.1	0.4	0.5	0.2	2.2	4.8	Other
0.0	0.0	0.0	0.0	0.0	0.0	0.0	0.0	0.0	0.0	0.0	0.1	0.1	0.2	0.2	0.1	0.1	0.0	0.0	0.0	0.7	0.8	North America
0.0	0.0	0.0	0.0	0.0	0.0	0.0	0.0	0.0	0.0	0.0	0.0	0.1	0.1	0.2	0.1	0.1	0.0	0.0	0.0	0.0	0.0	USA
0.0	0.0	0.0	0.0	0.0	0.0	0.0	0.0	0.0	0.0	0.0	0.0	0.0	0.0	0.0	0.0	0.0	0.0	0.0	0.0	0.0	0.0	Oceania
0.0	0.0	0.0	0.0	0.0	0.0	0.0	0.0	0.0	0.0	0.0	0.0	1.7	1.7	0.0	1.1	1.4	0.0	0.9	0.0	0.0	6.8	Middle East
0.0	0.0	0.0	0.0	0.0	0.0	0.0	0.0	0.0	0.0	0.0	0.0	1.0	0.0	0.0	1.1	0.5	0.0	0.0	0.0	0.0	2.6	U.A.E.
0.0	0.0	0.0	0.0	0.0	0.0	0.0	0.0	0.0	0.0	0.0	0.0	0.6	1.7	0.0	0.0	1.0	0.0	0.8	0.0	0.0	4.2	Other
0.0	0.0	0.0	0.0	0.0	0.0	0.0	0.0	0.0	0.0	0.0	0.0	0.1	0.0	0.0	0.0	0.0	0.0	0.0	0.0	0.0	0.1	Others
<i>(Annual percentage change)</i>																						
-8.5	-30.3	10.9	40.1	0.3	-38.7	-3.4	-47.7	-27.1	-43.6	-9.1	1.7	63.9	110.8	-13.1	36.9	-12.2	31.6	10.1	37.8	-10.7	27.2	DOMESTIC EXPORTS (f.o.b)
54.7	-16.8	42.0	108.5	90.9	18.3	51.4	-29.3	-46.6	-8.7	20.0	14.8	47.4	125.8	-21.0	23.0	-14.5	21.0	-18.6	49.3	25.9	20.5	Asia
94.6	34.8	40.9	516.7	99.9	-17.0	209.4	4.2	1.4	-21.1	50.7	-47.9	27.6	149.3	-10.7	-67.3	17.1	-72.1	-25.5	-88.9	73.1	-12.9	Japan
136.0	-40.6	-3.0	-3.7	-53.2	144.0	65.0	-55.1	-97.9	-38.3	-34.1	110.2	-62.2	24.1	-30.5	161.6	15.7	-61.2	-2.0	140.7	-0.9	24.7	Thailand
-7.5	-29.1	-7.6	1,123.7	482.0	-76.9	-87.1	-42.2	3.8	-90.1	214.1	-55.4	276.4	879.4	18.1	20.7	-95.8	-47.5	-26.5	-50.7	18.6	9.9	Singapore
-29.0	11.9	18.0	19.6	32.6	-24.1	42.9	-5.2	-5.1	-12.6	40.4	-2.0	156.4	65.3	-26.8	-27.5	-27.3	89.5	-35.8	-29.7	145.7	185.8	SAARC
-	135.6	84.3	212.3	-33.1	-38.5	2,206.8	51.1	19.0	330.8	85.1	-10.1	77.8	76.2	-46.0	-53.6	1,147.0	111.9	-45.9	-54.6	126.3	12.3	India
-31.8	9.8	15.9	14.0	34.1	-23.2	34.0	-7.3	-6.5	-22.3	37.9	-1.7	159.5	64.9	-25.8	-25.4	-41.0	88.4	-35.1	-28.1	8.3	5.5	Sri Lanka
60.5	25.9	127.7	507.8	15.8	-48.3	-10.6	-31.3	239.2	-66.2	-14.9	-17.5	24.8	16.7	11.0	41.7	-64.8	57.1	67.9	9.9	24.6	13.0	Europe
130.1	97.9	110.9	659.6	368.6	-1.8	32.6	-39.7	-44.0	-51.0	88.7	5.5	24.3	36.8	66.4	-30.8	-11.7	106.4	74.4	152.2	92.1	35.3	France
41.6	-15.7	102.3	960.6	5.5	-66.2	-28.2	-38.0	621.3	-100.0	-100.0	36.9	29.2	65.8	-74.5	102.0	-93.1	66.7	51.5	-3.2	-2.8	3.4	Germany, Federal
67.3	28.9	381.0	649.7	7.4	-51.7	-19.0	-25.1	399.4	-100.0	-100.0	-43.8	-36.5	-2.4	-10.9	-19.6	-64.2	15.8	118.0	-17.7	28.8	-12.8	UK

Table 20. External Debt and Debt Service, 1997 - 2006*(In millions of U.S. dollars)*

	1997	1998	1999	2000	2001	2002	2003	2004	2005	2006 <i>proj.</i>
Total external debt outstanding & disbursed	178.1	200.7	212.9	211.6	209.8	259.0	289.5	331.8	397.3	451.9
Medium- and long-term (DOD)	165.3	184.7	185.6	178.0	181.5	223.1	272.9	311.6	309.9	451.9
Official creditors	135.2	144.0	143.7	139.4	141.3	164.7	186.7	212.5	220.5	340.4
Multilateral	102.2	114.2	116.5	114.9	118.6	140.4	164.4	182.4	181.1	257.0
Bilateral	33.0	29.8	27.1	24.5	22.7	24.3	22.3	30.1	39.4	83.4
Private creditors	30.1	40.7	41.9	38.6	40.2	58.4	86.1	99.1	89.3	111.5
Suppliers	23.4	27.5	25.3	23.5	25.2	48.7	77.3	89.7	78.1	79.6
Financial markets	6.7	13.2	16.7	15.1	15.0	9.7	8.9	9.4	11.2	31.9
Short-term debt	12.8	16.1	27.3	33.6	28.3	35.9	16.6	20.2	87.4	-
Maldives Monetary Authority	0.0	0.0	0.0	0.0	0.0	0.0	0.0	0.0	0.0	-
Commercial banks	12.8	16.1	27.3	33.6	28.3	35.9	16.6	20.2	87.4	-
Debt service	28.0	15.0	16.8	19.0	20.1	21.2	21.5	28.4	31.1	31.0
Amortization	24.2	11.1	12.5	14.3	15.6	16.7	16.7	21.6	23.9	23.2
Interest payments	3.9	3.8	4.3	4.6	4.5	4.4	4.8	6.8	7.2	7.8
Medium- and long-term	3.9	3.8	4.3	4.6	4.5	4.4	4.8	6.8	7.2	7.8
Public sector	3.9	3.8	4.3	4.6	4.5	4.4	4.8	6.8	7.2	7.8
Official creditors	1.9	2.0	2.1	2.0	2.1	2.3	2.1	2.3	2.5	2.8
Multilateral	1.1	1.3	1.4	1.4	1.5	1.8	1.7	1.8	1.9	2.0
Bilateral	0.7	0.7	0.6	0.6	0.5	0.5	0.4	0.5	0.6	0.8
Private creditors	2.0	1.8	2.3	2.7	2.4	2.1	2.7	4.6	4.8	5.0
Suppliers	0.5	1.2	1.3	1.2	1.2	1.2	2.1	4.0	4.2	3.8
Financial markets	1.5	0.6	0.9	1.5	1.2	0.9	0.6	0.5	0.6	1.2
Private sector	0.0	0.0	0.0	0.0	0.0	0.0	0.0	0.0	0.0	0.0
Short-term debt	1.1	1.3	2.2	3.1	2.0	1.7	0.7	0.9	6.1	-
Commercial banks	1.1	1.3	2.2	3.1	2.0	1.7	0.7	0.9	6.1	-
Total external debt outstanding & disbursed as % of GDP	35.0	37.2	36.1	33.9	33.6	40.4	41.8	42.7	51.9	47.8
Medium- and long-term (DOD) as % of GDP	32.5	34.2	31.5	28.5	29.0	34.8	39.4	40.1	40.5	47.8
Short-term debt as % of GDP	2.5	3.0	4.6	5.4	4.5	5.6	2.4	2.6	11.4	-
Debt service ratio ^{1/}	7.0	3.5	3.9	4.2	4.3	4.3	3.7	4.1	6.5	4.9
<i>Memorandum items:</i>										
Nominal GDP	508.2	540.1	589.2	624.3	625.1	640.7	692.4	776.5	765.6	944.9
Exchange rate (avg mid)	11.77	11.8	11.8	11.8	12.2	12.8	12.8	12.8	12.8	12.8
Exports of goods & non-factor services (XGS)	401.8	426.9	434.3	457.2	464.3	495.2	584.1	688.2	478.8	633.4

1/ Ratio of debt service to exports of goods and nonfactor services.

Sources: Ministry of Finance and Treasury, Maldives Monetary Authority

revised on: 30th July, 2006

1997	1998	1999	2000	2001	2002	2003	2004	2005 Rev. Est.	2006 proj.	
<i>(Annual percentage change)</i>										
0.5	12.7	6.1	-0.6	-0.8	23.4	11.8	14.6	19.7	13.7	Total external debt outstanding & disbursed
1.0	11.7	0.5	-4.1	2.0	22.9	22.3	14.2	-0.6	45.8	Medium- and long-term (DOD)
2.2	6.5	-0.2	-3.0	1.4	16.5	13.4	13.8	3.8	54.3	Official creditors
5.9	11.7	2.1	-1.4	3.2	18.4	17.1	11.0	-0.7	41.9	Multilateral
-7.6	-9.8	-8.9	-9.8	-7.1	6.8	-8.0	34.6	31.2	111.6	Bilateral
-4.2	35.2	3.0	-8.0	4.2	45.3	47.5	15.1	-9.9	24.8	Private creditors
63.3	17.6	-8.1	-7.1	7.2	93.5	58.7	16.1	-13.0	1.9	Suppliers
-60.8	96.4	26.4	-9.3	-0.5	-35.4	-8.6	6.1	19.3	183.8	Financial markets
-5.8	26.0	69.8	23.1	-15.8	27.0	-53.8	21.6	332.8	na	Short-term debt
										Maldives Monetary Authority
-5.8	26.0	69.8	23.1	-15.8	27.0	-53.8	21.6	332.8	na	Commercial banks
137.0	-46.7	12.2	13.2	5.8	5.5	1.3	32.3	9.4	-0.3	Debt service
195.2	-54.0	12.0	15.2	8.7	7.4	-0.5	29.5	10.6	-2.8	Amortization
6.0	-0.8	12.6	7.6	-3.1	-1.3	8.3	41.7	5.8	8.0	Interest payments
6.0	-0.8	12.6	7.6	-3.1	-1.3	8.3	41.7	5.8	8.0	Medium- and long-term
6.0	-0.8	12.6	7.6	-3.1	-1.3	8.3	41.7	5.8	8.0	Public sector
-2.1	7.0	3.7	-5.1	5.8	12.1	-8.9	6.9	9.3	13.4	Official creditors
-5.0	13.2	10.6	-2.8	11.0	19.8	-8.7	5.0	6.8	5.8	Multilateral
2.9	-2.8	-9.1	-10.4	-7.0	-10.5	-9.5	14.6	18.0	37.9	Bilateral
14.9	-8.0	22.3	19.3	-9.5	-12.6	27.1	69.0	4.2	5.3	Private creditors
-1.9	126.4	9.5	-9.4	3.4	0.3	70.0	91.3	4.7	-9.5	Suppliers
22.5	-56.5	46.4	59.7	-19.8	-25.9	-32.4	-8.8	0.3	118.2	Financial markets
										Private sector
-3.8	24.7	62.5	42.2	-36.9	-14.1	-59.3	28.0	598.1	na	Short-term debt
-3.8	24.7	62.5	42.2	-36.9	-14.1	-59.3	28.0	598.1	na	Commercial banks
										Total external debt outstanding & disbursed as % of GDP
										Medium- and long-term (DOD) as % of GDP
										Short-term debt as % of GDP
171.5	-49.8	10.3	7.5	4.2	-1.1	-14.1	12.3	57.3	-24.6	Debt service ratio ^{1/}
<i>Memorandum items:</i>										
Nominal GDP										
Exchange rate (avg mid)										
Exports of goods & non-factor services (XGS)										

Table 21. Exchange Rates, 1997 - 2006*(In rufiyaa per foreign currency unit; end of period)*

	1997	1998	1999	2000	2001	2002	2003	2004	2005
U.S. dollar	11.7700	11.7700	11.7700	11.7700	12.8000	12.8000	12.8000	12.8000	12.8000
Japanese yen	0.0889	0.0942	0.1127	0.1025	0.1020	0.1018	0.1164	0.1207	0.1134
Singapore dollar	7.1513	6.9910	6.8805	6.6436	6.8312	7.1140	7.3452	7.6358	7.6634
Indian rupee	0.2966	0.2726	0.2654	0.2468	0.2615	0.2601	0.2753	0.2861	0.2880
Sri Lanka rupee	0.1895	0.1725	0.1601	0.1443	0.1357	0.1297	0.1298	0.1201	0.1295
Great Britain Pound	19.0860	19.3075	18.7329	16.9721	17.8251	19.7971	21.9020	24.2576	22.4039
Euro	-	-	11.6863	10.3454	11.0299	12.6607	15.4782	16.9684	15.1736
<i>(Annual percentage change)</i>									
U.S. dollar	0.0	0.0	0.0	0.0	8.8	0.0	0.0	0.0	0.0
Japanese yen	-12.2	6.0	19.6	-9.1	-0.5	-0.2	14.3	3.7	-6.0
Singapore dollar	-13.3	-2.2	-1.6	-3.4	2.8	4.1	3.2	4.0	0.4
Indian rupee	-7.9	-8.1	-2.6	-7.0	6.0	-0.5	5.8	3.9	0.7
Sri Lanka rupee	-6.9	-9.0	-7.2	-9.9	-6.0	-4.4	0.1	-7.5	7.8
Great Britain Pound	-1.3	1.2	-3.0	-9.4	5.0	11.1	10.6	10.8	-7.6
Euro	-	-	-	-11.5	6.6	14.8	22.3	9.6	-10.6
Rf/SDR (end of period)	15.8807	16.5725	16.1544	15.3353	16.0719	17.3386	19.0204	19.8785	18.2947
USD/SDR (end of period)	1.3493	1.4080	1.3725	1.3029	1.2556	1.3546	1.4860	1.5530	1.4293

Source: Maldives Monetary Authority.

Last update: 9th October, 2006

2005											2006										
Feb-05	Mar-05	Apr-05	May-05	Jun-05	Jul-05	Aug-05	Sep-05	Oct-05	Nov-05	Dec-05	Jan-06	Feb-06	Mar-06	Apr-06	May-06	Jun-06	Jul-06	Aug-06	Sep-06		
12.8000	12.8000	12.8000	12.8000	12.8000	12.8000	12.8000	12.8000	12.8000	12.8000	12.8000	12.8000	12.8000	12.8000	12.8000	12.8000	12.8000	12.8000	12.8000	12.8000	12.8000	U.S. dollar
0.1196	0.1170	0.1186	0.1165	0.1143	0.1117	0.1138	0.1127	0.1096	0.1105	0.1134	0.1124	0.1128	0.1122	0.1150	0.1171	0.1132	0.1135	0.1132	0.1119		Japanese yen
7.6788	7.6061	7.6140	7.5685	7.4734	7.4410	7.5222	7.4730	7.5863	7.5108	7.6634	7.8218	7.8405	7.8882	8.0526	8.1024	8.0366	8.1159	8.1358	8.0728		Singapore dollar
0.2869	0.2865	0.2871	0.2884	0.2880	0.2880	0.2878	0.2857	0.2816	0.2833	0.2880	0.2937	0.2952	0.2942	0.2907	0.2836	0.2823	0.2785	0.2796	0.2841		Indian rupee
0.1263	0.1262	0.1256	0.1255	0.1257	0.1250	0.1243	0.1237	0.1256	0.1296	0.1295	0.1296	0.1291	0.1287	0.1286	0.1284	0.1273	0.1271	0.1286	0.1290		Sri Lanka rupee
23.9680	23.5113	23.9040	23.0020	22.8540	21.8078	22.5931	22.6434	22.7970	22.1544	22.4039	22.3856	22.2234	22.0321	22.7789	23.8104	23.4698	23.4973	24.0482	23.8601		Great Britain Pound
16.5494	16.2144	16.2834	15.8268	15.1720	15.0090	15.3427	15.2461	15.3117	14.8894	15.1736	15.3171	15.1520	15.1936	15.8023	16.2288	16.0708	16.0273	16.1877	16.0762		Euro
(Annual percentage change)																					
0.0	0.0	0.0	0.0	0.0	0.0	0.0	0.0	0.0	0.0	0.0	0.0	0.0	0.0	0.0	0.0	0.0	0.0	0.0	0.0	0.0	U.S. dollar
2.5	-0.4	3.5	5.6	1.2	-3.4	-1.0	-0.7	-6.7	-7.1	-6.0	-6.9	-5.7	-4.1	-3.0	0.5	-1.0	1.6	-0.5	-0.7		Japanese yen
3.0	2.4	3.1	3.8	1.9	1.0	2.2	0.8	0.6	-1.0	0.4	2.4	2.1	3.7	5.8	7.1	7.5	9.1	8.2	8.0		Singapore dollar
3.5	2.6	1.1	5.7	3.7	5.8	6.1	4.6	2.5	1.7	0.7	2.7	2.9	2.7	1.3	-1.7	-2.0	-3.3	-2.8	-0.6		Indian rupee
-0.2	-1.8	-1.7	-1.2	-0.3	2.6	2.1	2.1	4.1	8.3	7.8	7.9	2.2	2.0	2.4	2.3	1.3	1.7	3.5	4.3		Sri Lanka rupee
1.8	1.7	7.2	3.7	-0.8	-6.4	-0.9	0.2	-1.1	-4.7	-7.6	-7.7	-7.3	-6.3	-4.7	3.5	2.7	7.7	6.4	5.4		Great Britain Pound
4.2	5.3	9.2	4.9	-0.9	-3.4	-0.2	-1.3	-4.5	-8.5	-10.6	-9.7	-8.4	-6.3	-3.0	2.5	5.9	6.8	5.5	5.4		Euro
19.6095	19.3386	19.4148	18.8794	18.6446	18.5838	18.6860	18.5674	18.5062	18.2290	18.2947	18.4782	18.3684	18.4042	18.8296	19.125504	18.7808	18.9934	19.0531	18.9396		Rf/SDR (end of period)
1.5320	1.5108	1.5168	1.4750	1.4566	1.4519	1.4598	1.4506	1.4458	1.4241	1.4293	1.4436	1.4350	1.4378	1.47106	1.49418	1.46725	1.4839	1.4885	1.4797		USD/SDR (end of period)